

## CD109 RABBIT PAB

货号: N225218

产品全名: CD109 兔多抗

基因符号 CD109 antigen; 150 kDa TGF-beta-1-binding protein; C3 and PZP-like alpha-2-macroglobulin domain-containing protein 7; Platelet-specific Gov antigen; p180; r150; CD antigen CD109

**UNIPROT ID:** Q6YHK3

背景: This gene encodes a member of the alpha2-macroglobulin/complement superfamily. The encoded GPI-linked glycoprotein is found on the cell surface of platelets, activated T-cells, and endothelial cells. The protein binds to and negatively regulates signaling of transforming growth factor beta (TGF-beta). Multiple transcript variants encoding different isoforms have been found for this gene.

抗原: Synthetic peptide from human protein at AA range: 751-800

经过测试的应用: IHC-P, ELISA

推荐稀释比: IHC: 1/50-1/100 ELISA: 1/10000

种属反应性: Rabbit

克隆性: Rabbit Polyclonal

分子量: -

亚型: IgG

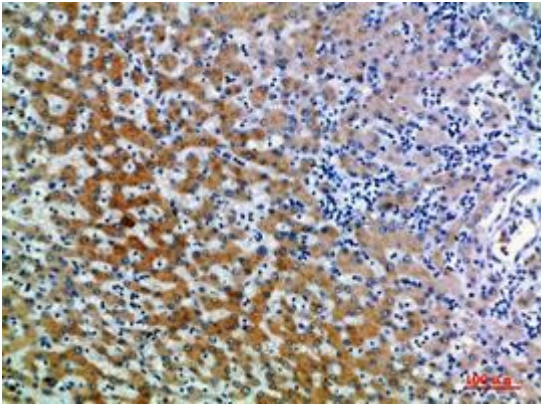
纯化: Affinity Purified

种属反应性: Human

成分: PBS (without Mg<sup>2+</sup> and Ca<sup>2+</sup>), pH 7.3 containing 50% glycerol, 0.5% BSA and 0.02% sodium azide

研究领域: Immunology

储存和运输: Store at -20°C. Avoid repeated freezing and thawing



Immunohistochemistry analysis of paraffin-embedded Human liver using CD109 antibody. High-pressure and temperature Sodium Citrate pH 6.0 was used for antigen retrieval.