

CCT8L2 RABBIT PAB

货号: S218477

产品全名: CCT8L2 兔多抗

基因符号: CESK1

UNIPROT ID: Q96SF2 (Gene Accession - BC033797)

背景: Possible molecular chaperone; assists the folding of proteins upon ATP hydrolysis.

抗原: Fusion protein of human CCT8L2

经过测试的应用: ELISA, IHC

推荐稀释比: IHC: 30-150; ELISA: 5000-10000

种属反应性: Rabbit

克隆性: Rabbit Polyclonal

亚型: Immunogen-specific rabbit IgG

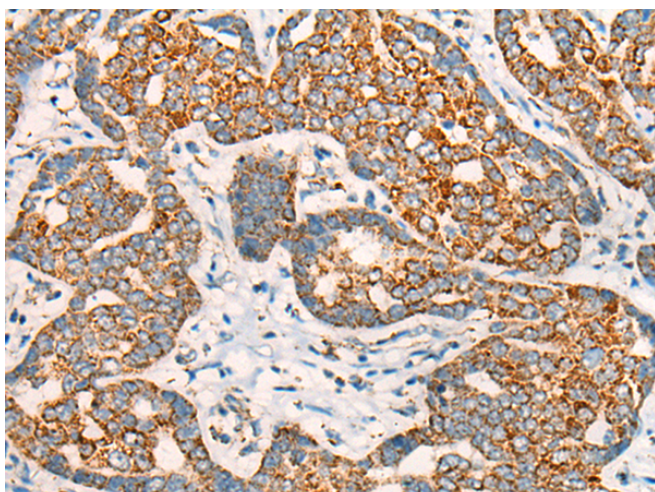
纯化: Antigen affinity purification

种属反应性: Human

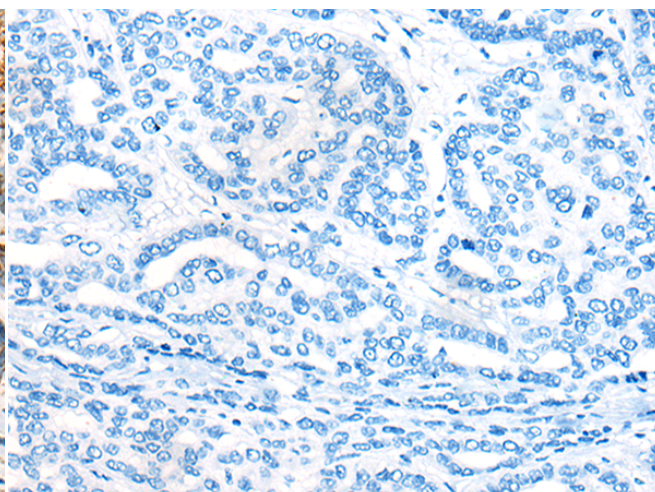
成分: PBS (without Mg²⁺ and Ca²⁺), pH 7.4, 150 mM NaCl, 0.05% Sodium Azide and 40% glycerol

研究领域: Cell Biology

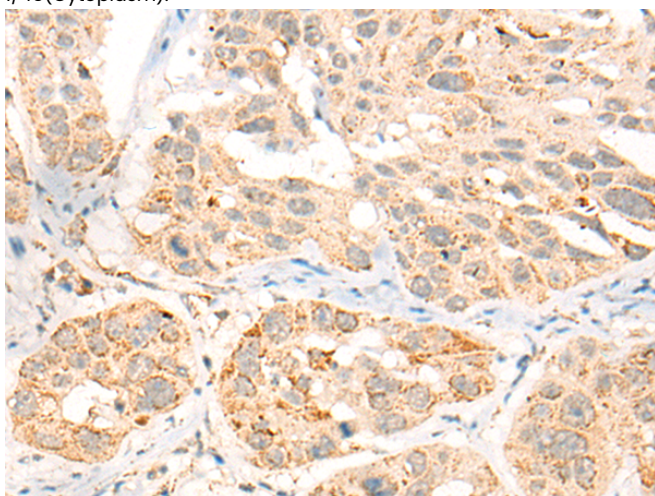
储存和运输: Store at -20°C. Avoid repeated freezing and thawing



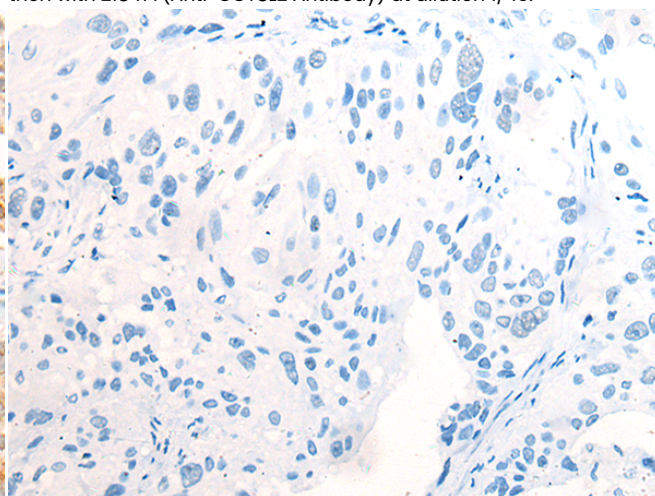
Immunohistochemistry analysis of paraffin embedded Human liver cancer tissue using 218477(CCT8L2 Antibody) at a dilution of 1/45(Cytoplasm).



In comparison with the IHC on the left, the same paraffin-embedded Human liver cancer tissue is first treated with the fusion protein and then with 218477(Anti-CCT8L2 Antibody) at dilution 1/45.



The image on the left is immunohistochemistry of paraffin-embedded Human esophagus cancer tissue using 218477(Anti-CCT8L2 Antibody) at a dilution of 1/45.



In comparison with the IHC on the left, the same paraffin-embedded Human esophagus cancer tissue is first treated with fusion protein and then with D224522(Anti-CCT8L2 Antibody) at dilution 1/45.



Product Description

Pioneering GTPase and Oncogene Product Development since 2010
