

CCT2 RABBIT MAB

货号: N263255

产品全名: CCT2 兔单克隆抗体

基因符号 CCT2; 99D8.1; CCTB; T-complex protein 1 subunit beta; TCP-1-beta; CCT-beta

UNIPROT ID: P78371

背景: Molecular chaperone; assists the folding of proteins upon ATP hydrolysis. As part of the BBS/CCT complex may play a role in the assembly of BBSome, a complex involved in ciliogenesis regulating transports vesicles to the cilia. Known to play a role, in vitro, in the folding of actin and tubulin.

抗原: A synthetic peptide of human CCT2

经过测试的应用: WB,IHC-F,IHC-P,ICC/IF,IP

推荐稀释比: WB: 1/500-1/1000 IHC: 1/50-1/100 IF: 1/50-1/200 IP: 1/20

种属反应性: Rabbit

克隆性: Rabbit Monoclonal

克隆编号: R07-6C2

分子量: Calculated MW: 57 kDa; Observed MW: 57 kDa

亚型: IgG

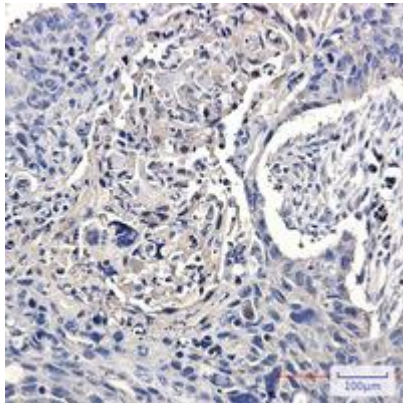
纯化: Affinity Purified

种属反应性: Human, Mouse and Rat

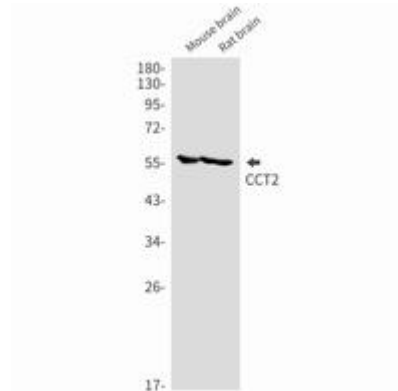
成分: PBS (without Mg²⁺ and Ca²⁺), pH 7.3 containing 50% glycerol, 0.5% BSA and 0.02% sodium azide

研究领域: Signal Transduction

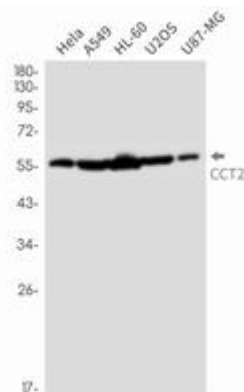
储存和运输: Store at -20°C. Avoid repeated freezing and thawing



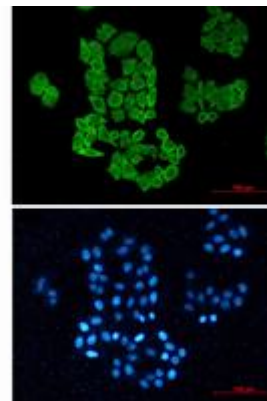
Immunohistochemistry analysis of paraffin-embedded Human lung cancer using CCT2 antibody. High-pressure and temperature Sodium Citrate pH 6.0 was used for antigen retrieval.



Western blot analysis of CCT2 in mouse brain, rat brain lysates using CCT2 antibody.



Western blot analysis of CCT2 in HeLa, A549, HL-60, U2OS, U87-MG lysates using CCT2 antibody.



Immunocytochemistry analysis of CCT2 (green) in HeLa using CCT2 antibody, and DAPI (blue).