

CCNYL1 RABBIT PAB

货号: S221690

产品全名: CCNYL1 兔多抗

基因符号

UNIPROT ID: Q8N7R7 (Gene Accession - XP_005246400)

背景: CCNYL1 belongs to the cyclin family, Cyclin Y subfamily and contains 1 cyclin N terminal domain. The specific function of CCNYL1 is not yet known.

抗原: Synthetic peptide of human CCNYL1

经过测试的应用: ELISA, IHC

推荐稀释比: IHC: 25-100; ELISA: 5000-10000

种属反应性: Rabbit

克隆性: Rabbit Polyclonal

亚型: Immunogen-specific rabbit IgG

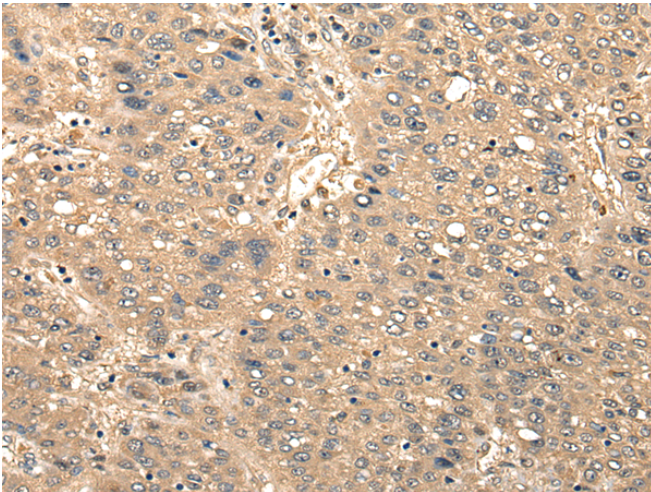
纯化: Antigen affinity purification

种属反应性: Human

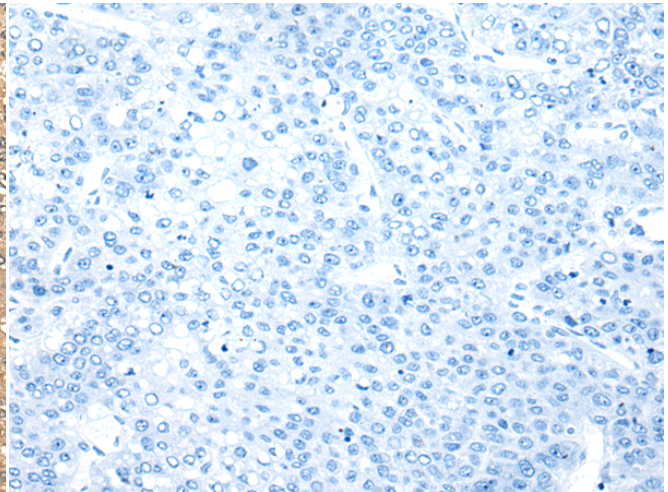
成分: PBS (without Mg²⁺ and Ca²⁺), pH 7.4, 150 mM NaCl, 0.05% Sodium Azide and 40% glycerol

研究领域: Epigenetics and Nuclear Signaling, Cancer, Cell Biology

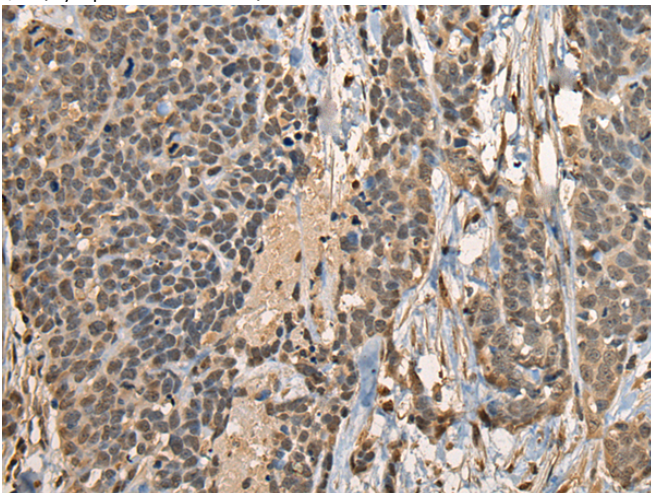
储存和运输: Store at -20°C. Avoid repeated freezing and thawing



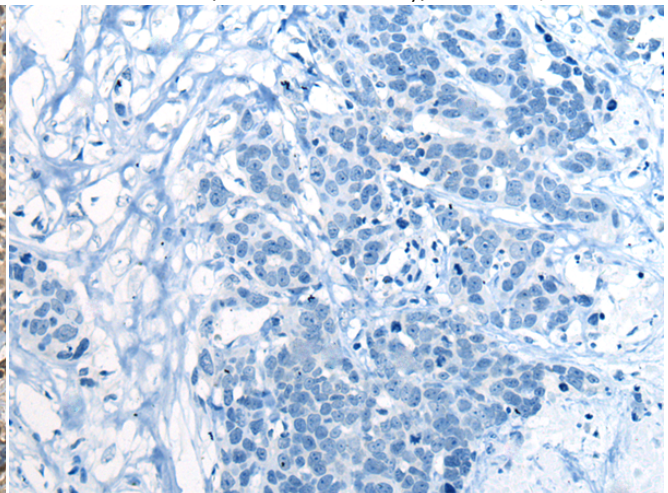
Immunohistochemistry analysis of paraffin embedded Human liver cancer tissue using 221690 (CCNYL1 Antibody) at a dilution of 1/25 (Cytoplasm or Nucleus).



In comparison with the IHC on the left, the same paraffin-embedded Human liver cancer tissue is first treated with the synthetic peptide and then with 221690 (Anti-CCNYL1 Antibody) at dilution 1/25.



The image on the left is immunohistochemistry of paraffin-embedded Human thyroid cancer tissue using 221690 (Anti-CCNYL1 Antibody) at a dilution of 1/25.



In comparison with the IHC on the left, the same paraffin-embedded Human thyroid cancer tissue is first treated with synthetic peptide and then with D263394 (Anti-CCNYL1 Antibody) at dilution 1/25.



Product Description

Pioneering GTPase and Oncogene Product Development since 2010
