

## CCNY RABBIT PAB

货号: S221866

产品全名: CCNY 兔多抗

基因符号: CCNX; CFP1; CBCP1; C10orf9

**UNIPROT ID:** Q8ND76 (Gene Accession - NP\_659449)

背景: Cyclins, such as CCNY, control cell division cycles and regulate cyclin-dependent kinases (e.g., CDC2; MIM 116940) (Li et al., 2009 [PubMed 18060517]).

抗原: Synthetic peptide of human CCNY

经过测试的应用: ELISA, IHC

推荐稀释比: IHC: 25-100; ELISA: 5000-10000

种属反应性: Rabbit

克隆性: Rabbit Polyclonal

亚型: Immunogen-specific rabbit IgG

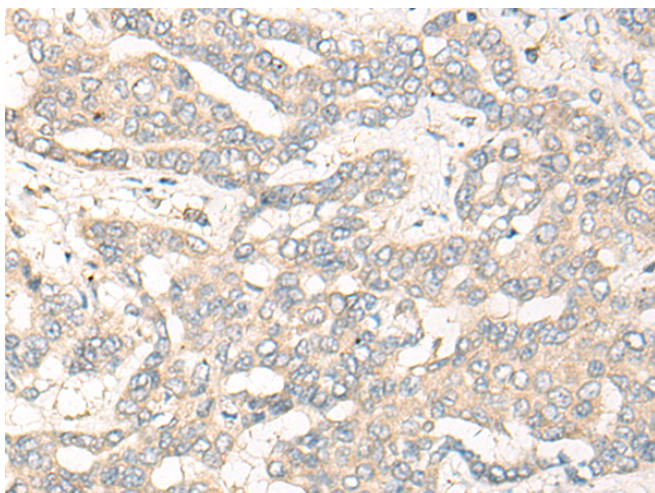
纯化: Antigen affinity purification

种属反应性: Human, Mouse

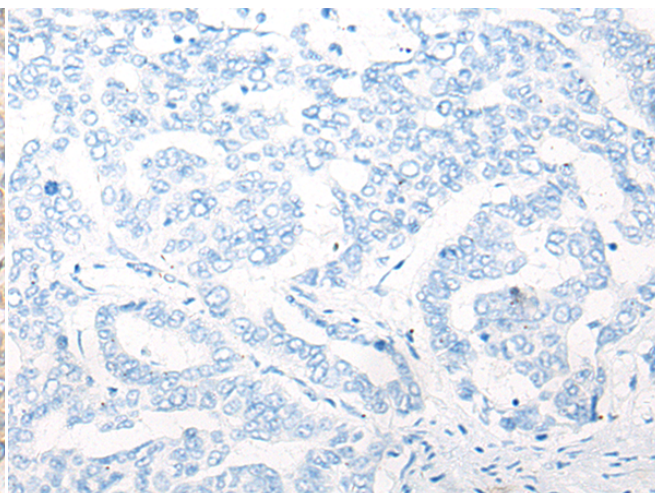
成分: PBS (without Mg<sup>2+</sup> and Ca<sup>2+</sup>), pH 7.4, 150 mM NaCl, 0.05% Sodium Azide and 40% glycerol

研究领域: Epigenetics and Nuclear Signaling, Cancer

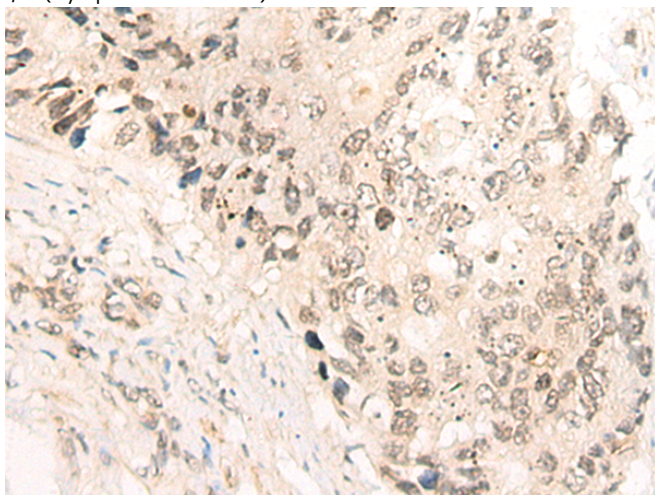
储存和运输: Store at -20°C. Avoid repeated freezing and thawing



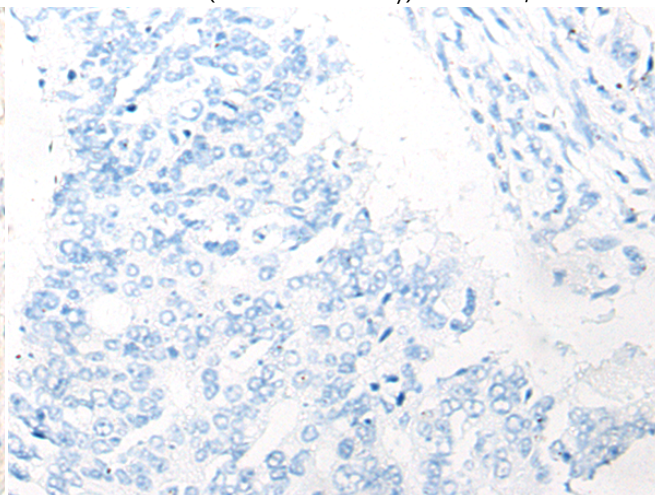
Immunohistochemistry analysis of paraffin embedded Human liver cancer tissue using 221866 (CCNY Antibody) at a dilution of 1/35 (Cytoplasm or Nucleus).



In comparison with the IHC on the left, the same paraffin-embedded Human liver cancer tissue is first treated with the synthetic peptide and then with 221866 (Anti-CCNY Antibody) at dilution 1/35.



The image on the left is immunohistochemistry of paraffin-embedded Human colorectal cancer tissue using 221866 (Anti-CCNY Antibody) at a dilution of 1/35.



In comparison with the IHC on the left, the same paraffin-embedded Human colorectal cancer tissue is first treated with synthetic peptide and then with D263649 (Anti-CCNY Antibody) at dilution 1/35.



# Product Description

Pioneering GTPase and Oncogene Product Development since 2010

---