

## CCNJ RABBIT PAB

货号: S216459

产品全名: CCNJ 兔多抗

基因符号: bA690P14.1

**UNIPROT ID:** Q5T5M9 (Gene Accession - BC043175 )

**背景:** Predicted to enable cyclin-dependent protein serine/threonine kinase regulator activity. Predicted to be involved in mitotic cell cycle phase transition and regulation of cyclin-dependent protein serine/threonine kinase activity. Predicted to be part of cyclin-dependent protein kinase holoenzyme complex. Predicted to be active in centrosome; cytoplasm; and nucleus. [provided by Alliance of Genome Resources, Apr 2022]

**抗原:** Fusion protein of human CCNJ

**经过测试的应用:** ELISA, IHC

**推荐稀释比:** IHC: 100-300; ELISA: 5000-10000

**种属反应性:** Rabbit

**克隆性:** Rabbit Polyclonal

**亚型:** Immunogen-specific rabbit IgG

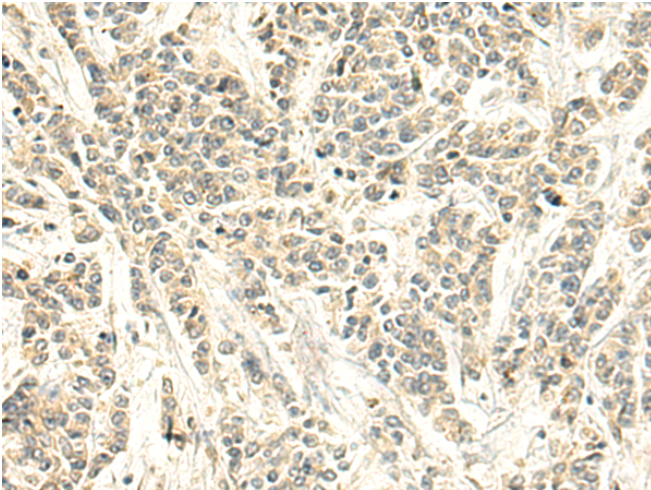
**纯化:** Antigen affinity purification

**种属反应性:** Human

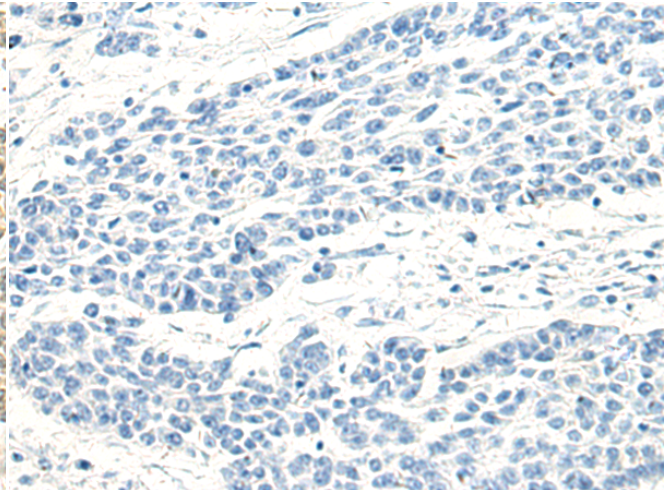
**成分:** PBS (without Mg<sup>2+</sup> and Ca<sup>2+</sup>), pH 7.4, 150 mM NaCl, 0.05% Sodium Azide and 40% glycerol

**研究领域:** Cancer

**储存和运输:** Store at -20°C. Avoid repeated freezing and thawing



Immunohistochemistry analysis of paraffin embedded Human colorectal cancer tissue using 216459 (CCNJ Antibody) at a dilution of 1/140 (Cytoplasm).



In comparison with the IHC on the left, the same paraffin-embedded Human colorectal cancer tissue is first treated with the fusion protein and then with 216459 (Anti-CCNJ Antibody) at dilution 1/140.