

CCNI RABBIT PAB

货号: S219362

产品全名: CCNI 兔多抗

基因符号: CYI; CYC1; CCNI1

UNIPROT ID: Q14094 (Gene Accession - BC000420)

背景: The protein encoded by this gene belongs to the highly conserved cyclin family, whose members are characterized by a dramatic periodicity in protein abundance through the cell cycle. Cyclins function as regulators of CDK kinases. Different cyclins exhibit distinct expression and degradation patterns which contribute to the temporal coordination of each mitotic event. This cyclin shows the highest similarity with cyclin G. The transcript of this gene was found to be expressed constantly during cell cycle progression.

抗原: Fusion protein of human CCNI

经过测试的应用: ELISA, IHC

推荐稀释比: IHC: 50-200; ELISA: 5000-10000

种属反应性: Rabbit

克隆性: Rabbit Polyclonal

亚型: Immunogen-specific rabbit IgG

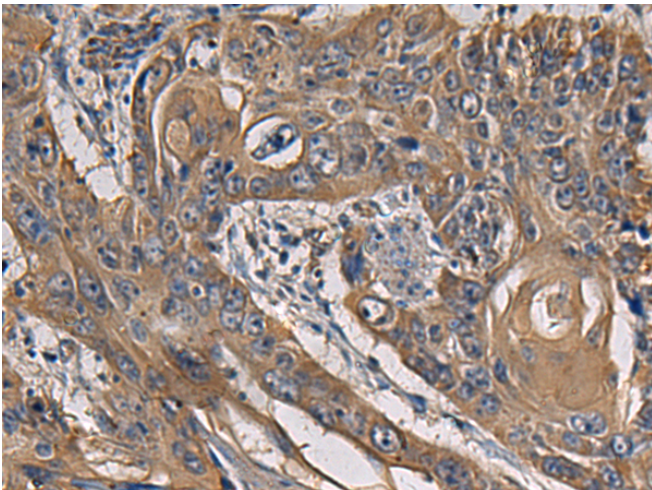
纯化: Antigen affinity purification

种属反应性: Human, Mouse

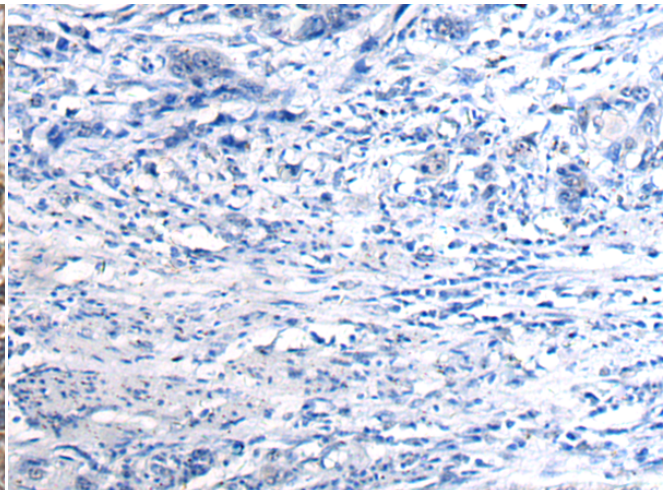
成分: PBS (without Mg²⁺ and Ca²⁺), pH 7.4, 150 mM NaCl, 0.05% Sodium Azide and 40% glycerol

研究领域: Epigenetics and Nuclear Signaling, Cancer

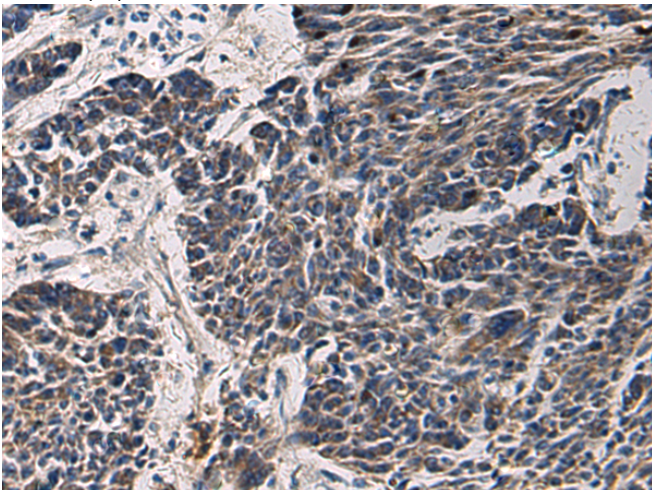
储存和运输: Store at -20°C. Avoid repeated freezing and thawing



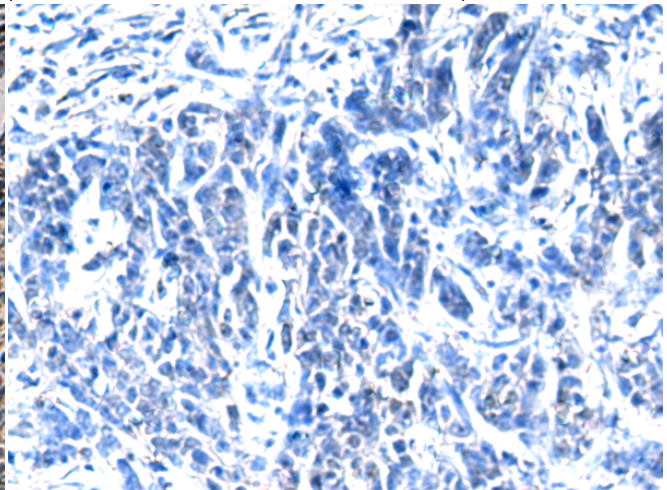
Immunohistochemistry analysis of paraffin embedded Human esophagus cancer tissue using 219362(CCNI Antibody) at a dilution of 1/65(Cytoplasm).



In comparison with the IHC on the left, the same paraffin-embedded Human esophagus cancer tissue is first treated with the fusion protein and then with 219362(Anti-CCNI Antibody) at dilution 1/65.



The image on the left is immunohistochemistry of paraffin-embedded Human colorectal cancer tissue using 219362(Anti-CCNI Antibody) at a dilution of 1/65.



In comparison with the IHC on the left, the same paraffin-embedded Human colorectal cancer tissue is first treated with fusion protein and then with D226547(Anti-CCNI Antibody) at dilution 1/65.



Product Description

Pioneering GTPase and Oncogene Product Development since 2010
