

CCNH RABBIT PAB

货号: S221263

产品全名: CCNH 兔多抗

基因符号: CAK; p34; p37; CycH

UNIPROT ID: P51946 (Gene Accession - NP_001230)

背景: The protein encoded by this gene belongs to the highly conserved cyclin family, whose members are characterized by a dramatic periodicity in protein abundance through the cell cycle. Cyclins function as regulators of CDK kinases. Different cyclins exhibit distinct expression and degradation patterns which contribute to the temporal coordination of each mitotic event. This cyclin forms a complex with CDK7 kinase and ring finger protein MAT1. The kinase complex is able to phosphorylate CDK2 and CDC2 kinases, thus functions as a CDK-activating kinase (CAK). This cyclin and its kinase partner are components of TFIIH, as well as RNA polymerase II protein complexes.

抗原: Synthetic peptide of human CCNH

经过测试的应用: ELISA, WB, IHC

推荐稀释比: IHC: 20-100;WB: 500-2000;ELISA: 2000-5000

种属反应性: Rabbit

克隆性: Rabbit Polyclonal

亚型: Immunogen-specific rabbit IgG

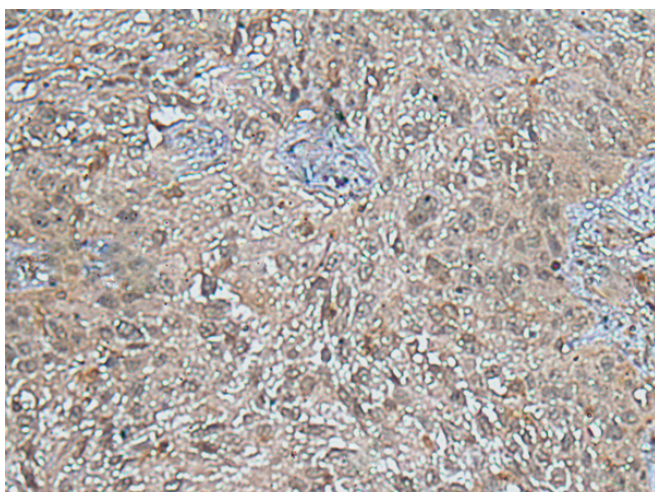
纯化: Antigen affinity purification

种属反应性: Human, Mouse, Rat

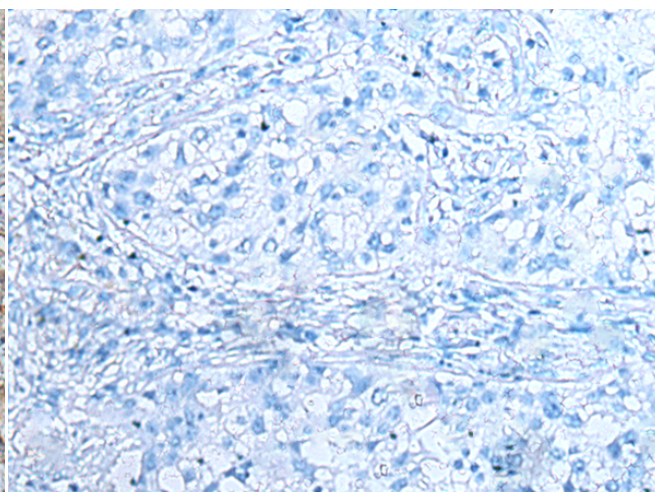
成分: PBS (without Mg²⁺ and Ca²⁺), pH 7.4, 150 mM NaCl, 0.05% Sodium Azide and 40% glycerol

研究领域: Epigenetics and Nuclear Signaling, Cancer

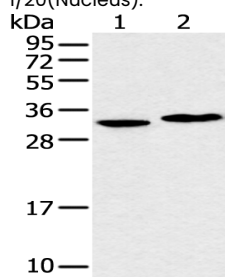
储存和运输: Store at -20°C. Avoid repeated freezing and thawing



Immunohistochemistry analysis of paraffin embedded Human lung cancer tissue using 221263 (CCNH Antibody) at a dilution of 1/20 (Nucleus).



In comparison with the IHC on the left, the same paraffin-embedded Human lung cancer tissue is first treated with the synthetic peptide and then with 221263 (Anti-CCNH Antibody) at dilution 1/20.



Gel: 12% SDS-PAGE, Lysate: 40 µg;

Lane 1-2: Jurkat and Raji cell;

Primary antibody: 221263 (CCNH Antibody) at dilution 1/300;

Secondary antibody: Goat anti rabbit IgG at 1/8000 dilution;

Exposure time: 1 second