

## CCN2 RABBIT PAB

货号: S219722

产品全名: CCN2 兔多抗

基因符号: CTGF; NOV2; HCS24; IGFBP8

**UNIPROT ID:** P29279 (Gene Accession - NP\_001892)

**背景:** The protein encoded by this gene is a mitogen that is secreted by vascular endothelial cells. The encoded protein plays a role in chondrocyte proliferation and differentiation, cell adhesion in many cell types, and is related to platelet-derived growth factor. Certain polymorphisms in this gene have been linked with a higher incidence of systemic sclerosis. [provided by RefSeq, Nov 2009]

**抗原:** Synthetic peptide of human CCN2

**经过测试的应用:** ELISA, WB, IHC

**推荐稀释比:** IHC: 25-50;WB: 500-2000;ELISA: 5000-10000

**种属反应性:** Rabbit

**克隆性:** Rabbit Polyclonal

**亚型:** Immunogen-specific rabbit IgG

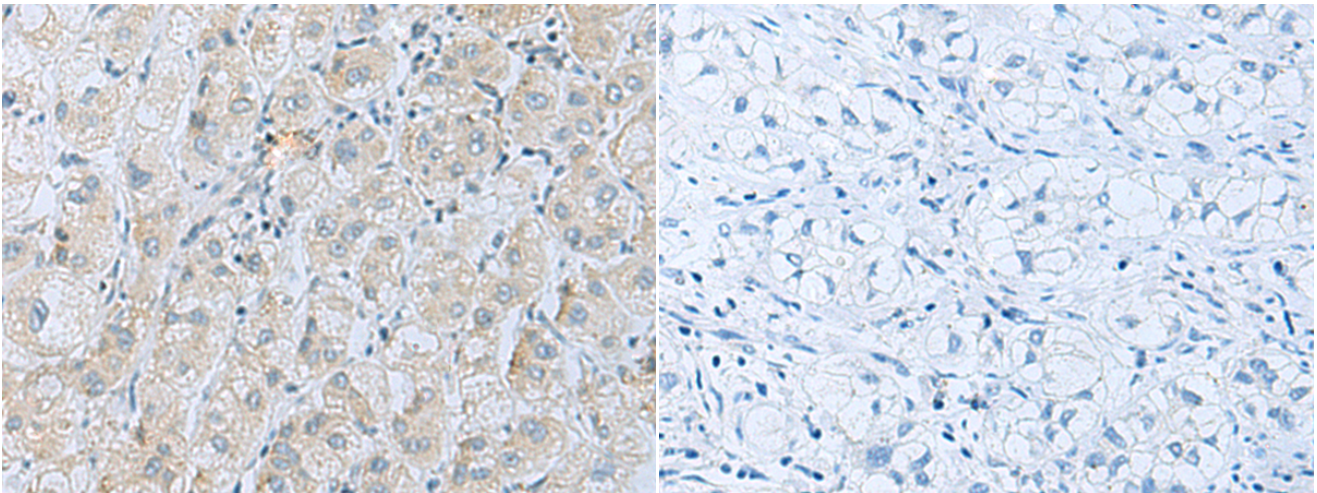
**纯化:** Antigen affinity purification

**种属反应性:** Human, Mouse, Rat

**成分:** PBS (without Mg<sup>2+</sup> and Ca<sup>2+</sup>), pH 7.4, 150 mM NaCl, 0.05% Sodium Azide and 40% glycerol

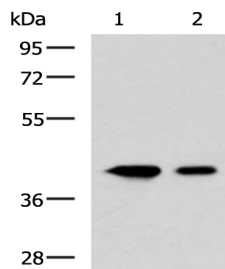
**研究领域:** Cardiovascular, Immunology

**储存和运输:** Store at -20°C. Avoid repeated freezing and thawing



Immunohistochemistry analysis of paraffin embedded Human liver cancer tissue using 219722(CCIN2 Antibody) at a dilution of 1/20(Secreted).

In comparison with the IHC on the left, the same paraffin-embedded Human liver cancer tissue is first treated with the synthetic peptide and then with 219722(Anti-CCIN2 Antibody) at dilution 1/20.



Gel: 8%SDS-PAGE, Lysate: 40 µg;

Lane 1-2: HeLa and HepG2 cell lysates;

Primary antibody: 219722(CCIN2 Antibody) at dilution 1/500;

Secondary antibody: HRP-conjugated Goat anti rabbit IgG at 1/5000 dilution;

Exposure time: 3 seconds