

CCL4L RABBIT PAB

货号: N225128

产品全名: CCL4L 兔多抗

基因符号 CCL4L1; CCL4L; LAG1; SCYA4L1; CCL4L2; CCL4L; SCYA4L2; C-C motif chemokine 4-like; Lymphocyte activation gene 1 protein; LAG-1; Macrophage inflammatory protein 1-beta; MIP-1-beta; Monocyte adherence-induced protein 5-alpha; Small-inducible cytokine A4-like

UNIPROT ID: Q8NHW4

背景: Chemokine that induces chemotaxis of cells expressing CCR5 or CCR1.

抗原: The antiserum was produced against synthesized peptide derived from the Internal region of human CCL4L1/CCL4L2. AA range:31-80

经过测试的应用: WB,ELISA

推荐稀释比: WB: 1/500-1/1000 ELISA: 1/10000

种属反应性: Rabbit

克隆性: Rabbit Polyclonal

分子量: Calculated MW: 10 kDa; Observed MW: 10 kDa

亚型: IgG

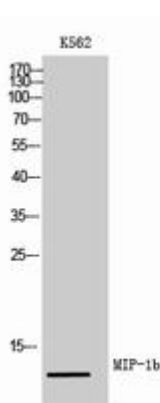
纯化: Affinity Purified

种属反应性: Human

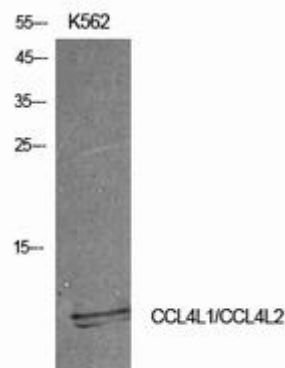
成分: PBS (without Mg²⁺ and Ca²⁺), pH 7.3 containing 50% glycerol, 0.5% BSA and 0.02% sodium azide

研究领域: Immunology

储存和运输: Store at -20°C. Avoid repeated freezing and thawing



Western blot analysis of CCL4L in K562 lysates using MIP1b antibody.



Western blot analysis of CCL4L in K562 lysates using CCL4L antibody.



Product Description

Pioneering GTPase and Oncogene Product Development since 2010
