

## CCL26 RABBIT PAB

货号: S213416

产品全名: CCL26 兔多抗

基因符号 IMAC; TSC-1; MIP-4α; SCYA26; MIP-4α

**UNIPROT ID:** Q9Y258 (Gene Accession - NP\_006063)

**背景:** This gene is one of two Cys-Cys (CC) cytokine genes clustered on the q arm of chromosome 7. Cytokines are a family of secreted proteins involved in immunoregulatory and inflammatory processes. The CC cytokines are proteins characterized by two adjacent cysteines. The cytokine encoded by this gene displays chemotactic activity for normal peripheral blood eosinophils and basophils. This protein also has antimicrobial activity, displaying an antibacterial effect on *S. pneumoniae*, *S. aureus*, Non-typeable *H. influenzae*, and *P. aeruginosa*. The product of this gene is one of three related chemokines that specifically activate chemokine receptor CCR3. This chemokine may contribute to the eosinophil accumulation in atopic diseases. [provided by RefSeq, Jul 2020]

**抗原:** Synthetic peptide of human CCL26

**经过测试的应用:** ELISA, IHC

**推荐稀释比:** IHC: 50-100; ELISA: 5000-10000

**种属反应性:** Rabbit

**克隆性:** Rabbit Polyclonal

**亚型:** Immunogen-specific rabbit IgG

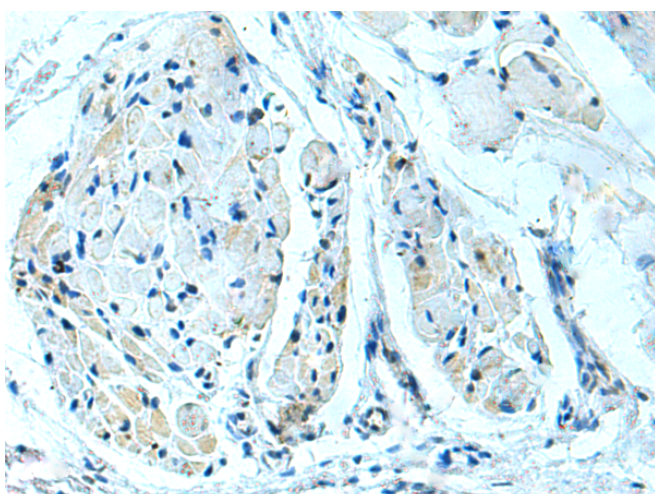
**纯化:** Antigen affinity purification

**种属反应性:** Human

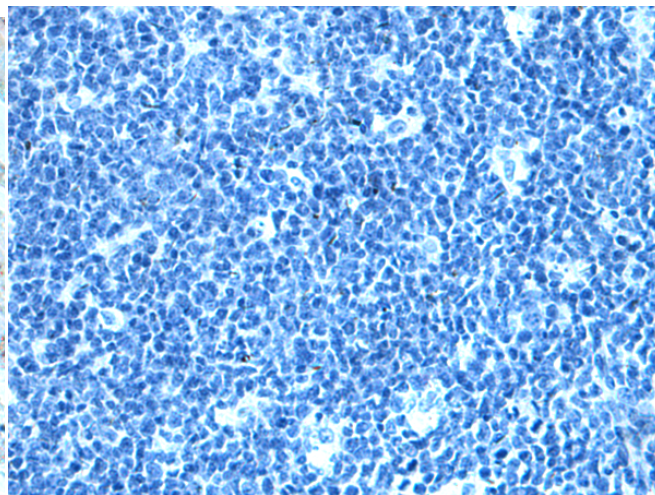
**成分:** PBS (without Mg<sup>2+</sup> and Ca<sup>2+</sup>), pH 7.4, 150 mM NaCl, 0.05% Sodium Azide and 40% glycerol

**研究领域:** Immunology

**储存和运输:** Store at -20°C. Avoid repeated freezing and thawing



Immunohistochemistry analysis of paraffin embedded Human tonsil tissue using 213416(CCL26 Antibody) at a dilution of 1/40(Secreted).



In comparison with the IHC on the left, the same paraffin-embedded Human tonsil tissue is first treated with the synthetic peptide and then with 213416(Anti-CCL26 Antibody) at dilution 1/40.