

CCL2 RABBIT PAB

货号: S219686

产品全名: CCL2 兔多抗

基因符号: HCL1, MCAF, MCP1, MCP-1, SCYA2, GDCF-2, SMC-CF, HSMCR30

UNIPROT ID: P13500 (Gene Accession - NP_002973)

背景: This gene is one of several cytokine genes clustered on the q-arm of chromosome 17. Cytokines are a family of secreted proteins involved in immunoregulatory and inflammatory processes. The protein encoded by this gene is structurally related to the CXC subfamily of cytokines. Members of this subfamily are characterized by two cysteines separated by a single amino acid. This cytokine displays chemotactic activity for monocytes and basophils but not for neutrophils or eosinophils. It has been implicated in the pathogenesis of diseases characterized by monocytic infiltrates, like psoriasis, rheumatoid arthritis and atherosclerosis. It binds to chemokine receptors CCR2 and CCR4.

抗原: Synthetic peptide of human CCL2

经过测试的应用: ELISA, IHC

推荐稀释比: IHC: 50-200; ELISA: 1000-10000

种属反应性: Rabbit

克隆性: Rabbit Polyclonal

亚型: Immunogen-specific rabbit IgG

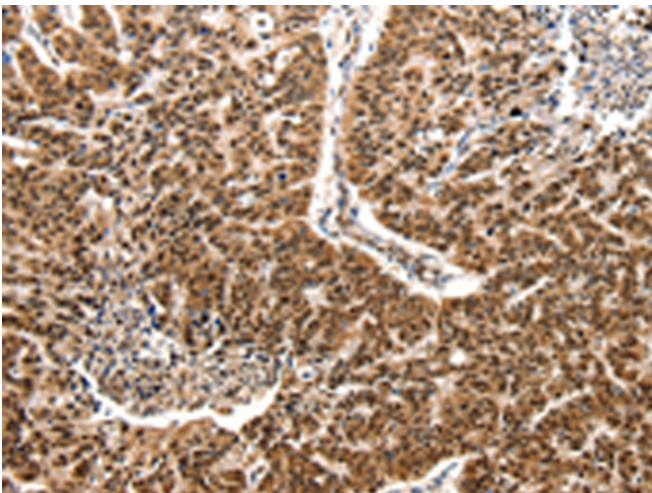
纯化: Antigen affinity purification

种属反应性: Human

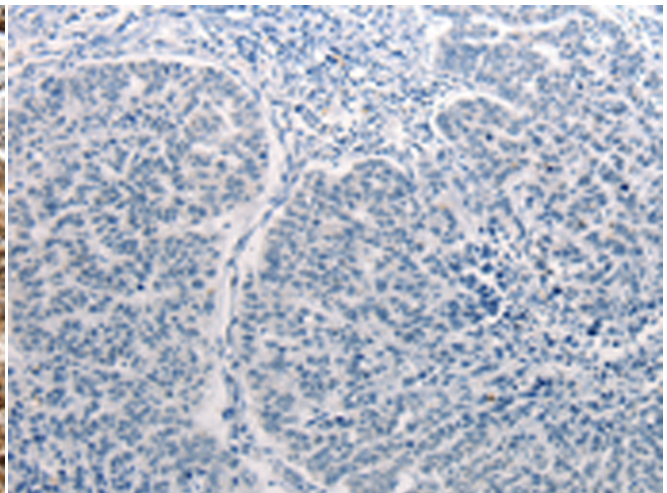
成分: PBS (without Mg²⁺ and Ca²⁺), pH 7.4, 150 mM NaCl, 0.05% Sodium Azide and 40% glycerol

研究领域: Cancer, Cardiovascular, Metabolism, Immunology

储存和运输: Store at -20°C. Avoid repeated freezing and thawing



Immunohistochemistry analysis of paraffin embedded Human lung cancer tissue using 219686(CCL2 Antibody) at a dilution of 1/50(Cytoplasm, Nucleus).



In comparison with the IHC on the left, the same paraffin-embedded Human lung cancer tissue is first treated with the synthetic peptide and then with 219686(Anti-CCL2 Antibody) at dilution 1/50.