

## CCL13 RABBIT PAB

货号: S210204

产品全名: CCL13 兔多抗

基因符号 NCC1; CKb10; MCP-4; NCC-1; SCYL1; SCYA13

**UNIPROT ID:** Q99616 (Gene Accession - BC008621)

**背景:** This antimicrobial gene is one of several Cys-Cys (CC) cytokine genes clustered on the q-arm of chromosome 17. Cytokines are a family of secreted proteins involved in immunoregulatory and inflammatory processes. The CC cytokines are proteins characterized by two adjacent cysteines. The cytokine encoded by this gene displays chemotactic activity for monocytes, lymphocytes, basophils and eosinophils, but not neutrophils. This chemokine plays a role in accumulation of leukocytes during inflammation. It may also be involved in the recruitment of monocytes into the arterial wall during arteriosclerosis.

**抗原:** Fusion protein of human CCL13

**经过测试的应用:** ELISA, WB, IHC

**推荐稀释比:** IHC: 80-400;WB: 500-2000;ELISA: 5000-10000

**种属反应性:** Rabbit

**克隆性:** Rabbit Polyclonal

**亚型:** Immunogen-specific rabbit IgG

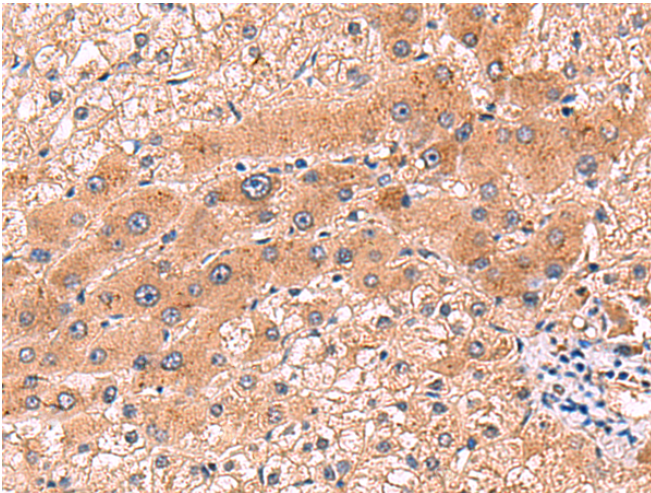
**纯化:** Antigen affinity purification

**种属反应性:** Human

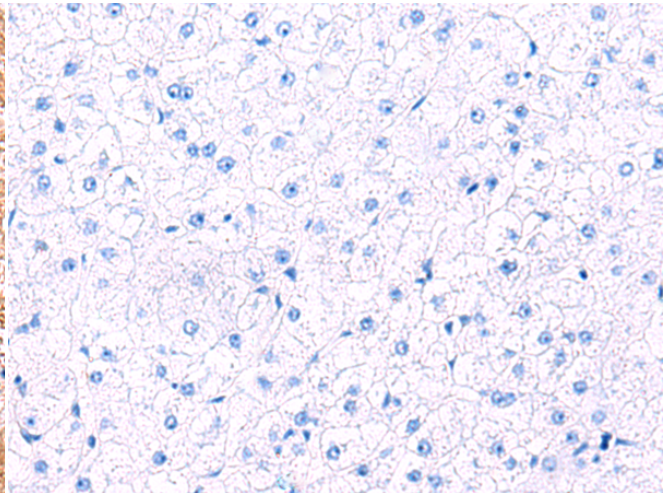
**成分:** PBS (without Mg<sup>2+</sup> and Ca<sup>2+</sup>), pH 7.4, 150 mM NaCl, 0.05% Sodium Azide and 40% glycerol

**研究领域:** Immunology

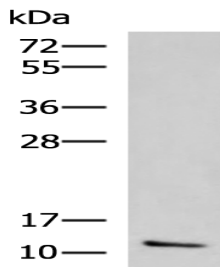
**储存和运输:** Store at -20°C. Avoid repeated freezing and thawing



Immunohistochemistry analysis of paraffin embedded Human liver cancer tissue using 210204(CCL13 Antibody) at a dilution of 1/90(Secreted).



In comparison with the IHC on the left, the same paraffin-embedded Human liver cancer tissue is first treated with the fusion protein and then with 210204(Anti-CCL13 Antibody) at dilution 1/90.



Gel: 12%SDS-PAGE, Lysate: 40 µg;  
Lane: Human ileum tissue lysate;  
Primary antibody: 210204(CCL13 Antibody) at dilution 1/800;  
Secondary antibody: HRP-conjugated Goat anti rabbit IgG at 1/5000 dilution;  
Exposure time: 40 seconds