

CCIN RABBIT PAB

货号: S221667

产品全名: CCIN 兔多抗

基因符号: BTBD20; KBTBD14

UNIPROT ID: Q13939 (Gene Accession - NP_005884)

背景: The protein encoded by this gene is a basic protein of the sperm head cytoskeleton. This protein contains kelch repeats and a BTB/POZ domain and is necessary for normal morphology during sperm differentiation. This gene is intronless.

抗原: Synthetic peptide of human CCIN

经过测试的应用: ELISA, IHC

推荐稀释比: IHC: 25-100; ELISA: 5000-10000

种属反应性: Rabbit

克隆性: Rabbit Polyclonal

亚型: Immunogen-specific rabbit IgG

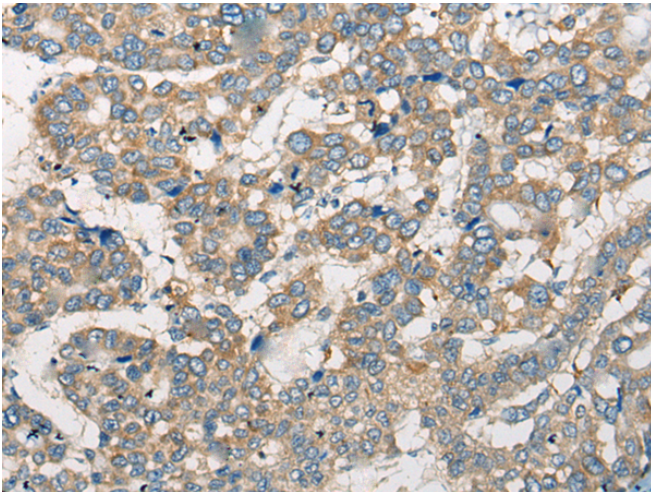
纯化: Antigen affinity purification

种属反应性: Human, Mouse, Rat

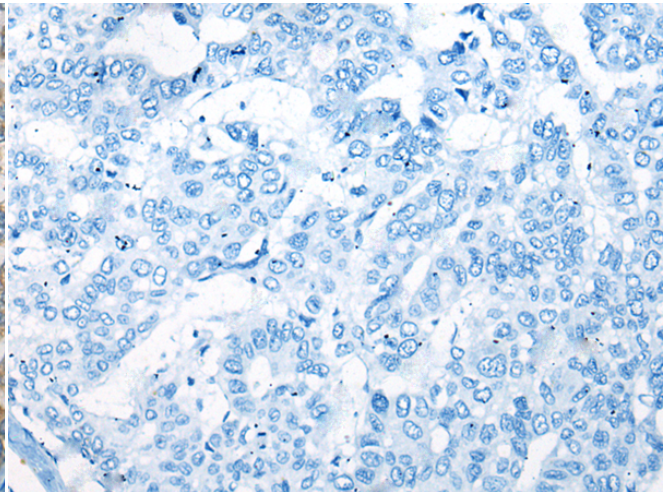
成分: PBS (without Mg²⁺ and Ca²⁺), pH 7.4, 150 mM NaCl, 0.05% Sodium Azide and 40% glycerol

研究领域: Signal Transduction

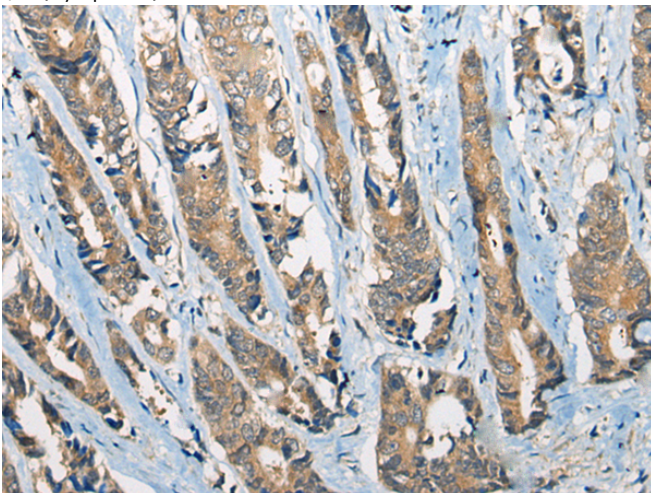
储存和运输: Store at -20°C. Avoid repeated freezing and thawing



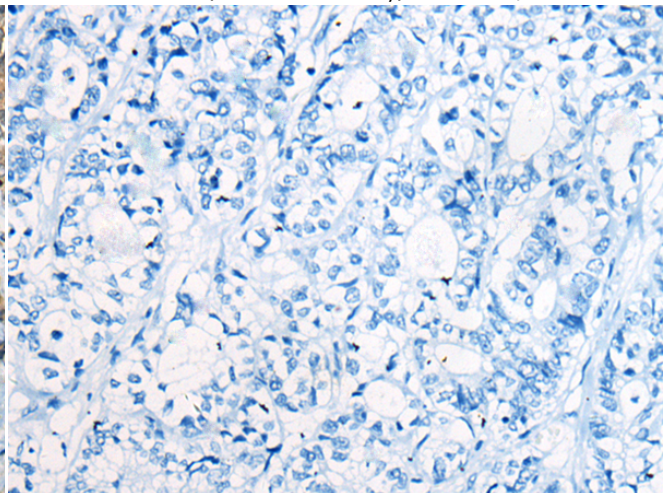
Immunohistochemistry analysis of paraffin embedded Human liver cancer tissue using 221667(CCIN Antibody) at a dilution of 1/30(Cytoplasm).



In comparison with the IHC on the left, the same paraffin-embedded Human liver cancer tissue is first treated with the synthetic peptide and then with 221667(Anti-CCIN Antibody) at dilution 1/30.



The image on the left is immunohistochemistry of paraffin-embedded Human gastric cancer tissue using 221667(Anti-CCIN Antibody) at a dilution of 1/30.



In comparison with the IHC on the left, the same paraffin-embedded Human gastric cancer tissue is first treated with synthetic peptide and then with D263366(Anti-CCIN Antibody) at dilution 1/30.



Product Description

Pioneering GTPase and Oncogene Product Development since 2010
