

CCDC85C RABBIT PAB

货号: S221686

产品全名: CCDC85C 兔多抗

基因符号

UNIPROT ID: A6NKD9 (Gene Accession - NP_001138467)

背景: CCDC85C may play an important role in cortical development, especially in the maintenance of radial glia.

抗原: Synthetic peptide of human CCDC85C

经过测试的应用: ELISA, WB, IHC

推荐稀释比: IHC: 30-150;WB: 500-2000;ELISA: 5000-10000

种属反应性: Rabbit

克隆性: Rabbit Polyclonal

亚型: Immunogen-specific rabbit IgG

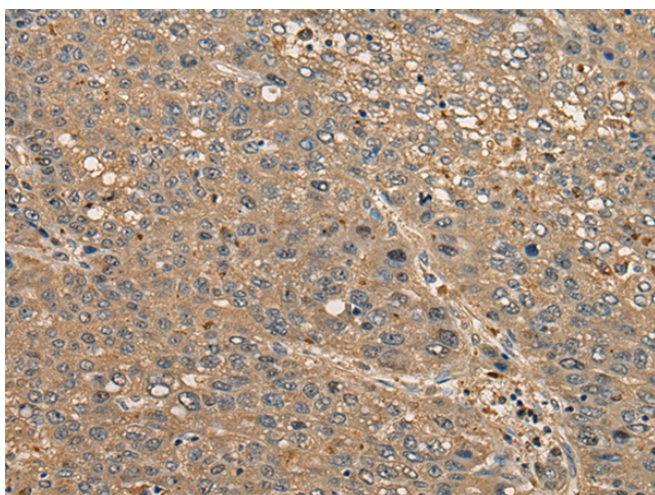
纯化: Antigen affinity purification

种属反应性: Human, Mouse

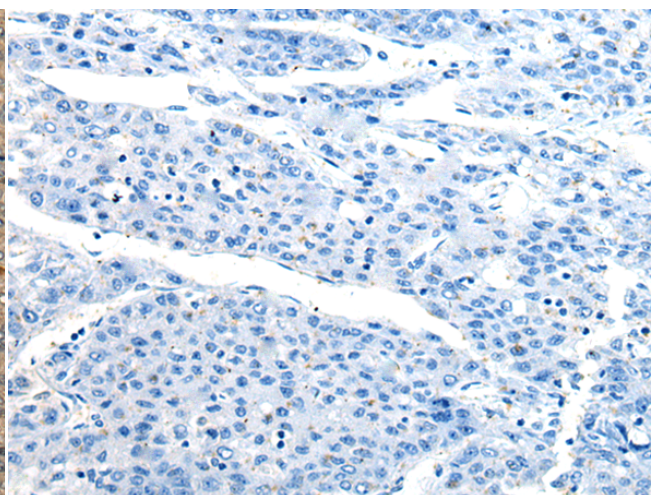
成分: PBS (without Mg²⁺ and Ca²⁺), pH 7.4, 150 mM NaCl, 0.05% Sodium Azide and 40% glycerol

研究领域: Developmental Biology

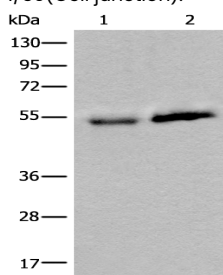
储存和运输: Store at -20°C. Avoid repeated freezing and thawing



Immunohistochemistry analysis of paraffin embedded Human liver cancer tissue using 221686 (CCDC85C Antibody) at a dilution of 1/30 (Cell junction).



In comparison with the IHC on the left, the same paraffin-embedded Human liver cancer tissue is first treated with the synthetic peptide and then with 221686 (Anti-CCDC85C Antibody) at dilution 1/30.



Gel: 8%SDS-PAGE, Lysate: 40 µg;

Lane 1-2: Human fetal intestines tissue and Human breast cancer tissue lysates;

Primary antibody: 221686 (CCDC85C Antibody) at dilution 1/400;

Secondary antibody: Goat anti rabbit IgG at 1/8000 dilution;

Exposure time: 5 minutes