

CCDC120 RABBIT PAB

货号: S218440

产品全名: CCDC120 兔多抗

基因符号: JM11

UNIPROT ID: Q96HB5 (Gene Accession - BC008769)

背景: This gene encodes a protein that contains a coiled-coil domain. Several alternatively spliced transcript variants encoding multiple isoforms have been found for this gene.

抗原: Fusion protein of human CCDC120

经过测试的应用: ELISA, IHC

推荐稀释比: IHC: 50-200; ELISA: 5000-10000

种属反应性: Rabbit

克隆性: Rabbit Polyclonal

亚型: Immunogen-specific rabbit IgG

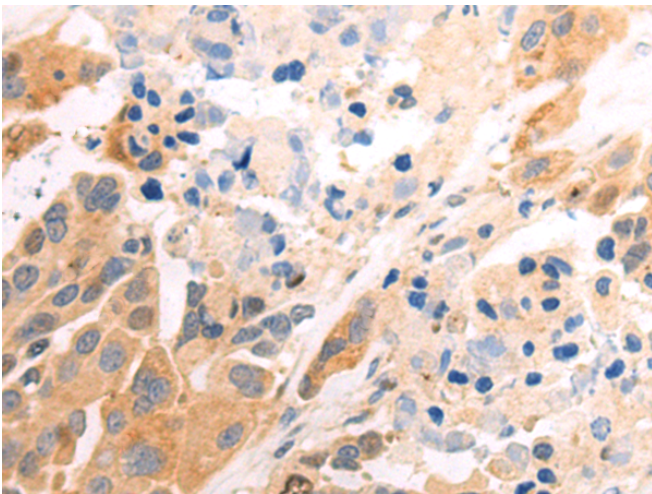
纯化: Antigen affinity purification

种属反应性: Human, Mouse

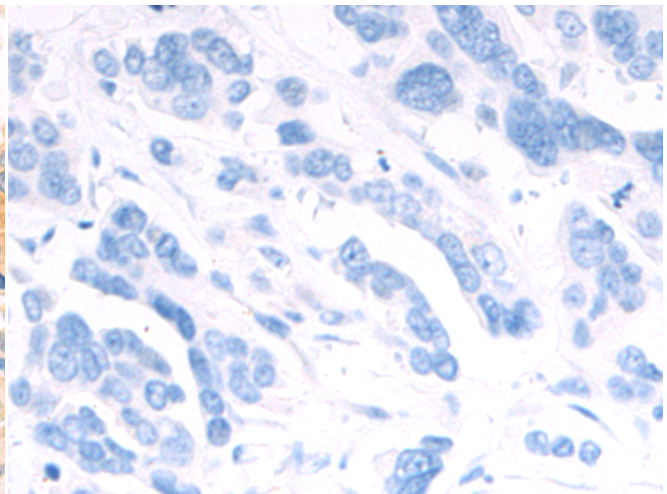
成分: PBS (without Mg²⁺ and Ca²⁺), pH 7.4, 150 mM NaCl, 0.05% Sodium Azide and 40% glycerol

研究领域: Cell Biology

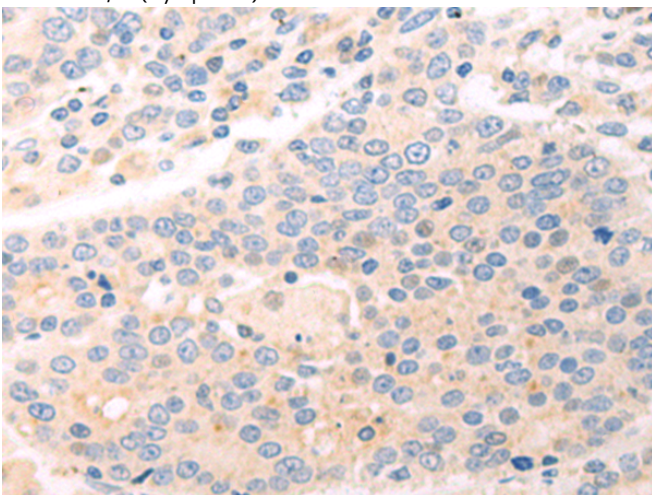
储存和运输: Store at -20°C. Avoid repeated freezing and thawing



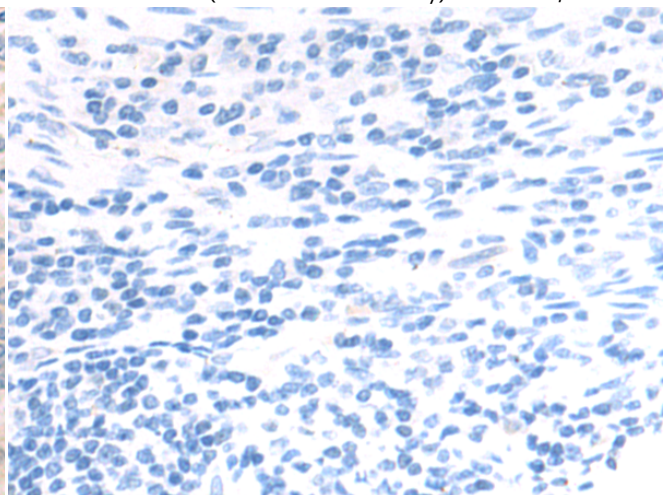
Immunohistochemistry analysis of paraffin embedded Human colorectal cancer tissue using 218440 (CCDC120 Antibody) at a dilution of 1/85 (Cytoplasm).



In comparison with the IHC on the left, the same paraffin-embedded Human colorectal cancer tissue is first treated with the fusion protein and then with 218440 (Anti-CCDC120 Antibody) at dilution 1/85.



The image on the left is immunohistochemistry of paraffin-embedded Human gastric cancer tissue using 218440 (Anti-CCDC120 Antibody) at a dilution of 1/85.



In comparison with the IHC on the left, the same paraffin-embedded Human gastric cancer tissue is first treated with fusion protein and then with D224436 (Anti-CCDC120 Antibody) at dilution 1/85.



Product Description

Pioneering GTPase and Oncogene Product Development since 2010
