

CCDC113 RABBIT PAB

货号: S218438

产品全名: CCDC113 兔多抗

基因符号: HSPC065

UNIPROT ID: Q9H0I3 (Gene Accession - BC126445)

背景: Component of centriolar satellites contributing to primary cilium formation.

抗原: Fusion protein of human CCDC113

经过测试的应用: ELISA, IHC

推荐稀释比: IHC: 50-300; ELISA: 5000-10000

种属反应性: Rabbit

克隆性: Rabbit Polyclonal

亚型: Immunogen-specific rabbit IgG

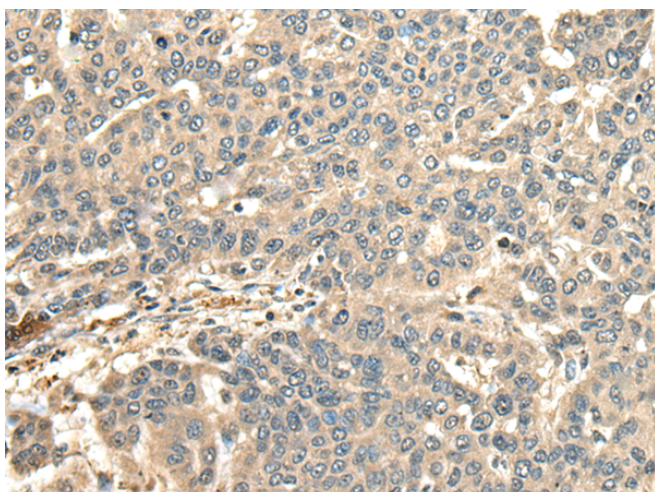
纯化: Antigen affinity purification

种属反应性: Human, Mouse

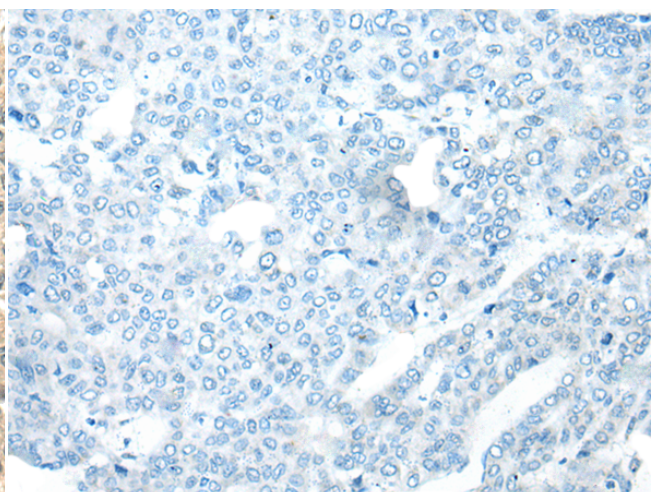
成分: PBS (without Mg²⁺ and Ca²⁺), pH 7.4, 150 mM NaCl, 0.05% Sodium Azide and 40% glycerol

研究领域: Cell Biology

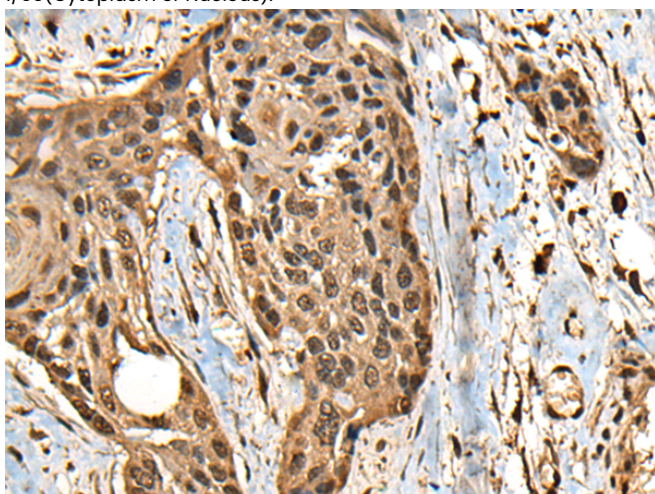
储存和运输: Store at -20°C. Avoid repeated freezing and thawing



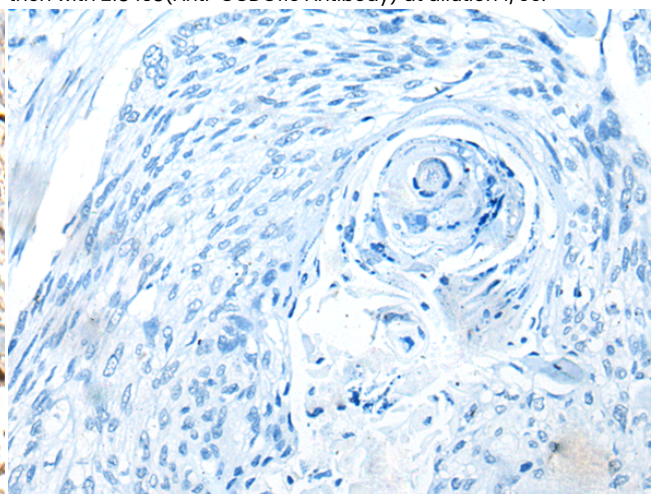
Immunohistochemistry analysis of paraffin embedded Human liver cancer tissue using 218438(CCDC113 Antibody) at a dilution of 1/65(Cytoplasm or Nucleus).



In comparison with the IHC on the left, the same paraffin-embedded Human liver cancer tissue is first treated with the fusion protein and then with 218438(Anti-CCDC113 Antibody) at dilution 1/65.



The image on the left is immunohistochemistry of paraffin-embedded Human esophagus cancer tissue using 218438(Anti-CCDC113 Antibody) at a dilution of 1/65.



In comparison with the IHC on the left, the same paraffin-embedded Human esophagus cancer tissue is first treated with fusion protein and then with D224433(Anti-CCDC113 Antibody) at dilution 1/65.



Product Description

Pioneering GTPase and Oncogene Product Development since 2010
