

CCAR1 RABBIT PAB

货号: S217363

产品全名: CCAR1 兔多抗

基因符号

UNIPROT ID: Q8IX12 (Gene Accession - BC130626)

背景: Enables RNA polymerase II cis-regulatory region sequence-specific DNA binding activity; nuclear receptor coactivator activity; and transcription corepressor activity. Involved in positive regulation of cell migration and positive regulation of cell population proliferation. Acts upstream of or within positive regulation of apoptotic process. Located in nuclear envelope lumen.

抗原: Fusion protein of human CCAR1

经过测试的应用: ELISA, IHC

推荐稀释比: IHC: 50-200; ELISA: 5000-10000

种属反应性: Rabbit

克隆性: Rabbit Polyclonal

亚型: Immunogen-specific rabbit IgG

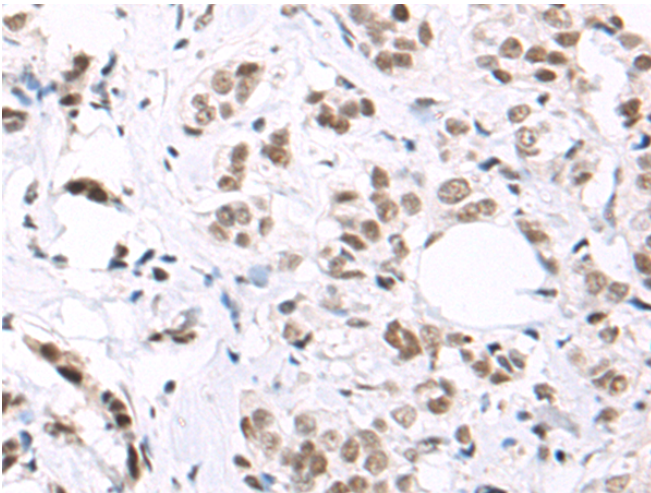
纯化: Antigen affinity purification

种属反应性: Human, Mouse

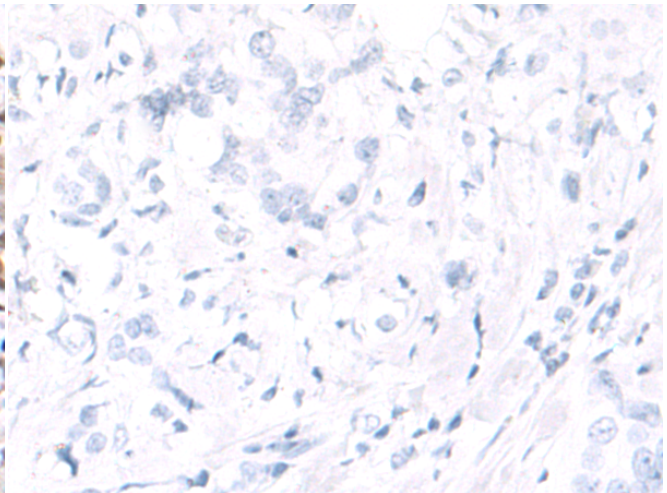
成分: PBS (without Mg²⁺ and Ca²⁺), pH 7.4, 150 mM NaCl, 0.05% Sodium Azide and 40% glycerol

研究领域: Epigenetics and Nuclear Signaling, Cancer

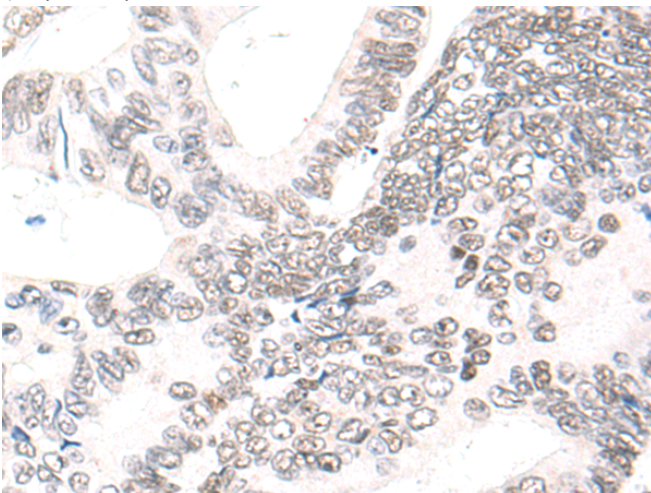
储存和运输: Store at -20°C. Avoid repeated freezing and thawing



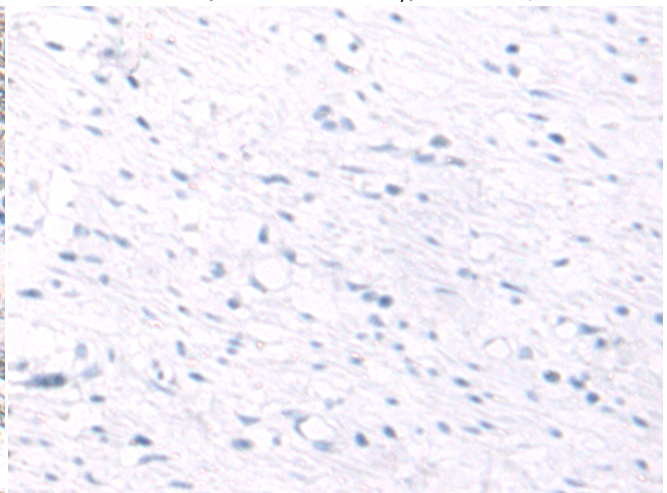
Immunohistochemistry analysis of paraffin embedded Human breast cancer tissue using 217363(CCAR1 Antibody) at a dilution of 1/80(Nucleus).



In comparison with the IHC on the left, the same paraffin-embedded Human breast cancer tissue is first treated with the fusion protein and then with 217363(Anti-CCAR1 Antibody) at dilution 1/80.



The image on the left is immunohistochemistry of paraffin-embedded Human colorectal cancer tissue using 217363(Anti-CCAR1 Antibody) at a dilution of 1/80.



In comparison with the IHC on the left, the same paraffin-embedded Human colorectal cancer tissue is first treated with fusion protein and then with D222236(Anti-CCAR1 Antibody) at dilution 1/80.



Product Description

Pioneering GTPase and Oncogene Product Development since 2010
