

## CBX8 RABBIT PAB

货号: S216401

产品全名: CBX8 兔多抗

基因符号: PC3; RC1

**UNIPROT ID:** Q9HC52 (Gene Accession - BC009376)

**背景:** Component of a Polycomb group (PcG) multiprotein PRC1-like complex, a complex class required to maintain the transcriptionally repressive state of many genes, including Hox genes, throughout development. PcG PRC1 complex acts via chromatin remodeling and modification of histones; it mediates monoubiquitination of histone H2A 'Lys-119', rendering chromatin heritably changed in its expressibility.

**抗原:** Fusion protein of human CBX8

**经过测试的应用:** ELISA, WB, IHC

**推荐稀释比:** IHC: 50-200; WB: 500-2000; ELISA: 5000-10000

**种属反应性:** Rabbit

**克隆性:** Rabbit Polyclonal

**亚型:** Immunogen-specific rabbit IgG

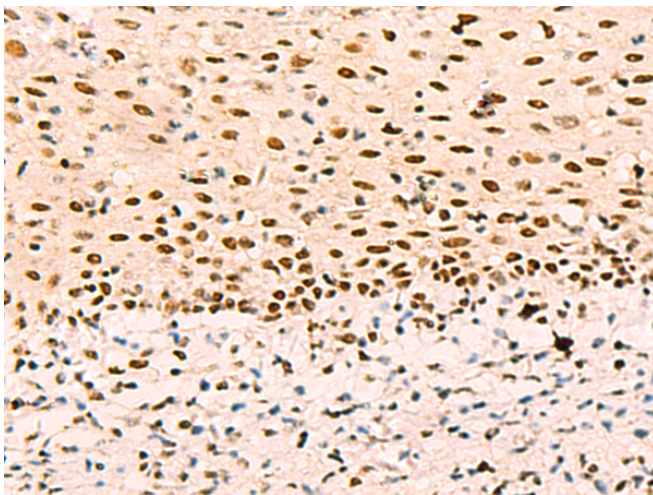
**纯化:** Antigen affinity purification

**种属反应性:** Human

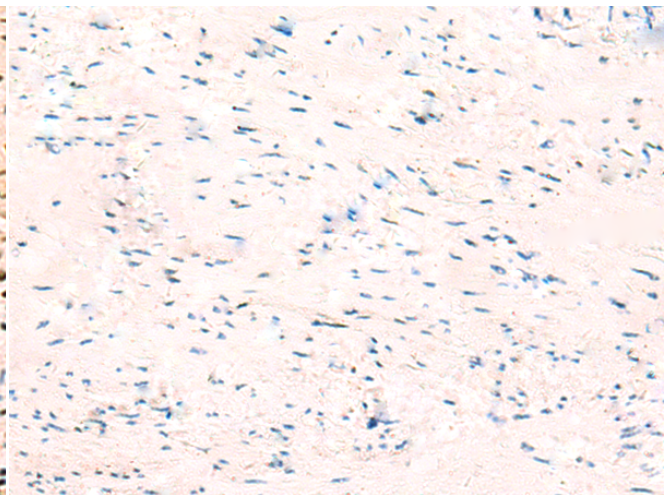
**成分:** PBS (without Mg<sup>2+</sup> and Ca<sup>2+</sup>), pH 7.4, 150 mM NaCl, 0.05% Sodium Azide and 40% glycerol

**研究领域:** Epigenetics and Nuclear Signaling

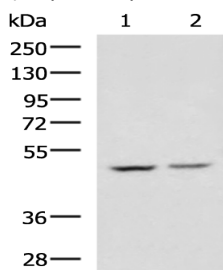
**储存和运输:** Store at -20°C. Avoid repeated freezing and thawing



Immunohistochemistry analysis of paraffin embedded Human cervical cancer tissue using 216401(CBX8 Antibody) at a dilution of 1/65 (Nucleus).



In comparison with the IHC on the left, the same paraffin-embedded Human cervical cancer tissue is first treated with the fusion protein and then with 216401(Anti-CBX8 Antibody) at dilution 1/65.



Gel: 8%SDS-PAGE, Lysate: 40 µg;

Lane 1-2: 293T and 231 cell lysates;

Primary antibody: 216401(CBX8 Antibody) at dilution 1/950;

Secondary antibody: HRP-conjugated Goat anti rabbit IgG at 1/5000 dilution;

Exposure time: 5 seconds