

CBX7 RABBIT PAB

货号: S221185

产品全名: CBX7 兔多抗

基因符号

UNIPROT ID: O95931 (Gene Accession - NP_783640)

背景: This gene encodes a protein that contains the CHROMO (CHROMatin Organization MODifier) domain. The encoded protein is a component of the Polycomb repressive complex 1 (PRC1), and is thought to control the lifespan of several normal human cells.

抗原: Synthetic peptide of human CBX7

经过测试的应用: ELISA, WB, IHC

推荐稀释比: IHC: 25-50;WB: 500-2000;ELISA: 5000-10000

种属反应性: Rabbit

克隆性: Rabbit Polyclonal

亚型: Immunogen-specific rabbit IgG

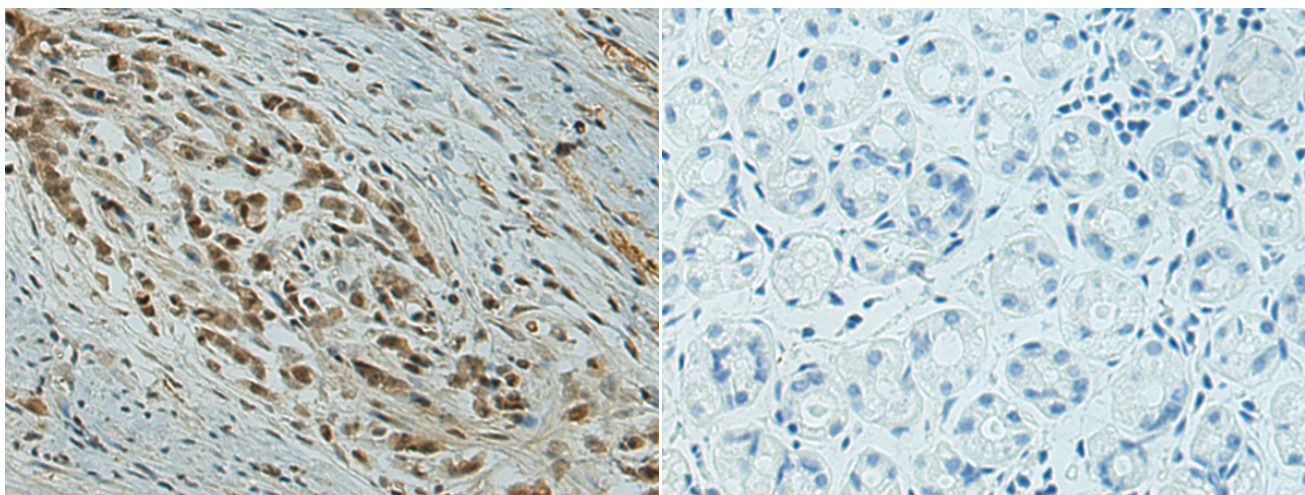
纯化: Antigen affinity purification

种属反应性: Human, Mouse, Rat

成分: PBS (without Mg²⁺ and Ca²⁺), pH 7.4, 150 mM NaCl, 0.05% Sodium Azide and 40% glycerol

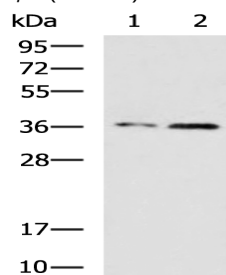
研究领域: Epigenetics and Nuclear Signaling

储存和运输: Store at -20°C. Avoid repeated freezing and thawing



Immunohistochemistry analysis of paraffin embedded Human gastric cancer tissue using 221185 (CBX7 Antibody) at a dilution of 1/25 (Nucleus).

In comparison with the IHC on the left, the same paraffin-embedded Human gastric cancer tissue is first treated with the synthetic peptide and then with 221185 (Anti-CBX7 Antibody) at dilution 1/25.



Gel: 12% SDS-PAGE, Lysate: 40 µg;

Lane 1-2: K562 and TM4 cell lysates;

Primary antibody: 221185 (CBX7 Antibody) at dilution 1/650;

Secondary antibody: HRP-conjugated Goat anti rabbit IgG at 1/5000 dilution;

Exposure time: 3 minutes