

CBLIF RABBIT PAB

货号: S219387

产品全名: CBLIF 兔多抗

基因符号 IF; GIF; INF; IFMH; TCN3

UNIPROT ID: P27352 (Gene Accession - BC037958)

背景: This gene is a member of the cobalamin transport protein family. It encodes a glycoprotein secreted by parietal cells of the gastric mucosa and is required for adequate absorption of vitamin B12. Vitamin B12 is necessary for erythrocyte maturation and mutations in this gene may lead to congenital pernicious anemia.

抗原: Fusion protein of human CBLIF

经过测试的应用: ELISA, IHC

推荐稀释比: IHC: 200-400; ELISA: 5000-10000

种属反应性: Rabbit

克隆性: Rabbit Polyclonal

亚型: Immunogen-specific rabbit IgG

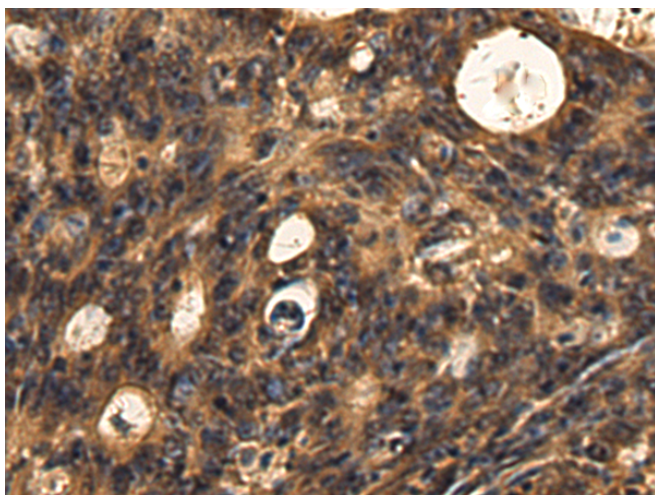
纯化: Antigen affinity purification

种属反应性: Human, Mouse, Rat

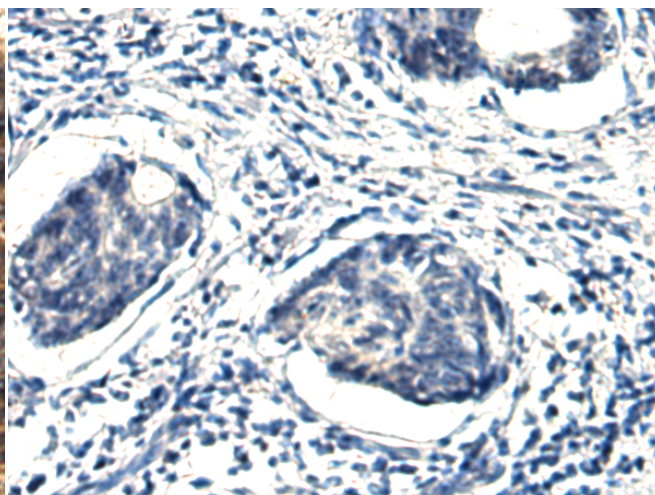
成分: PBS (without Mg²⁺ and Ca²⁺), pH 7.4, 150 mM NaCl, 0.05% Sodium Azide and 40% glycerol

研究领域: Metabolism

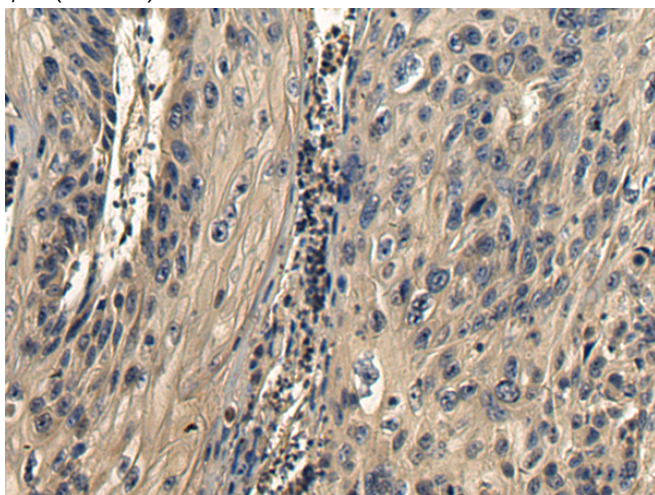
储存和运输: Store at -20°C. Avoid repeated freezing and thawing



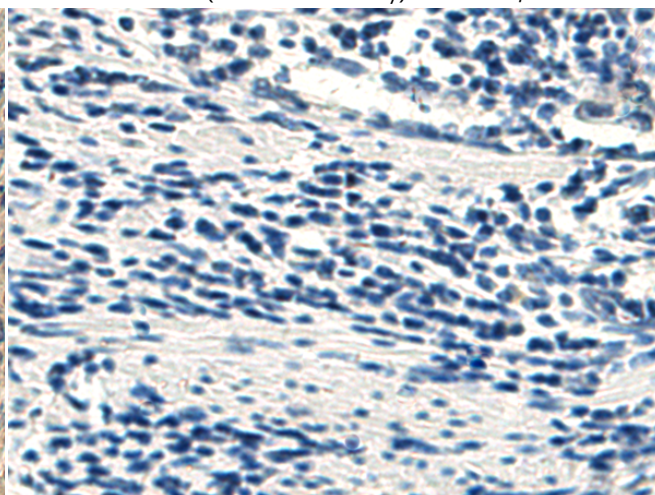
Immunohistochemistry analysis of paraffin embedded Human colorectal cancer tissue using 219387(CBLIF Antibody) at a dilution of 1/220(Secreted).



In comparison with the IHC on the left, the same paraffin-embedded Human colorectal cancer tissue is first treated with the fusion protein and then with 219387(Anti-CBLIF Antibody) at dilution 1/220.



The image on the left is immunohistochemistry of paraffin-embedded Human esophagus cancer tissue using 219387(Anti-CBLIF Antibody) at a dilution of 1/220.



In comparison with the IHC on the left, the same paraffin-embedded Human esophagus cancer tissue is first treated with fusion protein and then with D226618(Anti-CBLIF Antibody) at dilution 1/220.



Product Description

Pioneering GTPase and Oncogene Product Development since 2010
