

## CATHEPSIN Z RABBIT MAB

货号: N261972

产品全名: Cathepsin Z 兔单克隆抗体

基因符号 CTSX

**UNIPROT ID:** Q9UBR2

背景: Exhibits carboxy-monopeptidase as well as carboxy-dipeptidase activity.

抗原: Recombinant protein of human Cathepsin Z

经过测试的应用: WB,IHC-P

推荐稀释比: WB: 1/500-1/1000 IHC: 1/50-1/100

种属反应性: Rabbit

克隆性: Rabbit Monoclonal

克隆编号: R09-9J9

分子量: Calculated MW: 34 kDa; Observed MW: 34 kDa

亚型: IgG

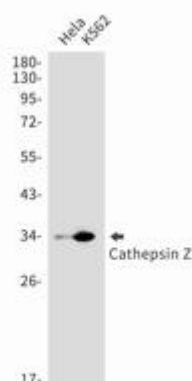
纯化: Affinity Purified

种属反应性: Human

成分: PBS (without Mg<sup>2+</sup> and Ca<sup>2+</sup>), pH 7.3 containing 50% glycerol, 0.5% BSA and 0.02% sodium azide

研究领域: Tags & Cell Markers

储存和运输: Store at -20°C. Avoid repeated freezing and thawing



Western blot analysis of Cathepsin Z in HeLa, K562 lysates using Cathepsin Z antibody.