

## CATHEPSIN B RABBIT MAB

货号: N261971

产品全名: Cathepsin B 兔单克隆抗体

基因符号 CB

**UNIPROT ID:** P10605

背景: Thiol protease which is believed to participate in intracellular degradation and turnover of proteins. Cleaves matrix extracellular phosphoglycoprotein MEPE. Has also been implicated in tumor invasion and metastasis.

抗原: Recombinant protein of mouse Cathepsin B

经过测试的应用: WB,ICC/IF

推荐稀释比: WB: 1/500-1/1000 IF: 1/50-1/200

种属反应性: Rabbit

克隆性: Rabbit Monoclonal

克隆编号: R08-7H4

分子量: Calculated MW: 37 kDa; Observed MW: 44,27,24 kDa

亚型: IgG

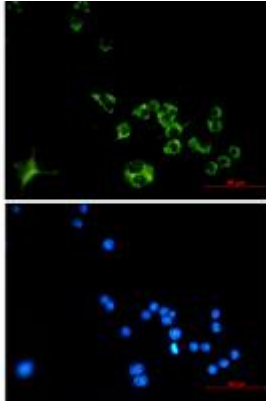
纯化: Affinity Purified

种属反应性: Mouse,Rat

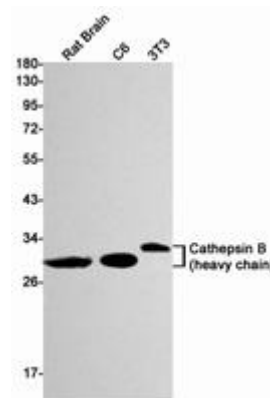
成分: PBS (without Mg<sup>2+</sup> and Ca<sup>2+</sup>), pH 7.3 containing 50% glycerol, 0.5% BSA and 0.02% sodium azide

研究领域: Neuroscience

储存和运输: Store at -20°C. Avoid repeated freezing and thawing



Immunocytochemistry analysis of Cathepsin B (green) in Raw264.7 using Cathepsin B antibody, and DAPI (blue)



Western blot analysis of Cathepsin B in rat Brain, C6, 3T3 lysates using Cathepsin B antibody.