

CATHELICIDIN RABBIT MAB

货号: N261970

产品全名: Cathelicidin 兔单克隆抗体

基因符号 LL37; CAP18; CRAMP; HSD26; CAP-18; FALL39; FALL-39

UNIPROT ID: P49913

背景: Binds to bacterial lipopolysaccharides (LPS), has antibacterial activity.

抗原: A synthetic peptide of human Cathelicidin

经过测试的应用: WB,IHC-P,IP

推荐稀释比: WB: 1/500-1/1000 IHC: 1/50-1/100 IP: 1/20

种属反应性: Rabbit

克隆性: Rabbit Monoclonal

克隆编号: R05-6J2

分子量: Calculated MW: 19 kDa; Observed MW: 19 kDa

亚型: IgG

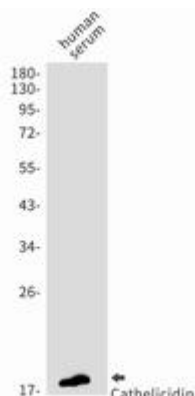
纯化: Affinity Purified

种属反应性: Human

成分: PBS (without Mg²⁺ and Ca²⁺), pH 7.3 containing 50% glycerol, 0.5% BSA and 0.02% sodium azide

研究领域: Microbiology

储存和运输: Store at -20°C. Avoid repeated freezing and thawing



Western blot analysis of Cathelicidin/CLP in Human serum lysates using Cathelicidin antibody.