

## CATALASE RABBIT MAB

货号: N261969

产品全名: Catalase 兔单克隆抗体

基因符号 Cas1; CAT; Catalase; Cs1

**UNIPROT ID:** P04040

背景: Catalase catalyzes the conversion of hydrogen peroxide to water and oxygen. Research studies show that overexpression of this antioxidant enzyme increases the ability of pancreatic  $\beta$ -cells to scavenge reactive oxygen species (ROS), thereby protecting pancreatic  $\beta$ -cells from oxidative stress.

抗原: A synthetic peptide of human Catalase

经过测试的应用: WB,IHC-F,IHC-P,ICC/IF

推荐稀释比: WB: 1/500-1/1000 IHC: 1/50-1/100 IF: 1/50-1/200

种属反应性: Rabbit

克隆性: Rabbit Monoclonal

克隆编号: R05-5D9

分子量: Calculated MW: 60 kDa; Observed MW: 60 kDa

亚型: IgG

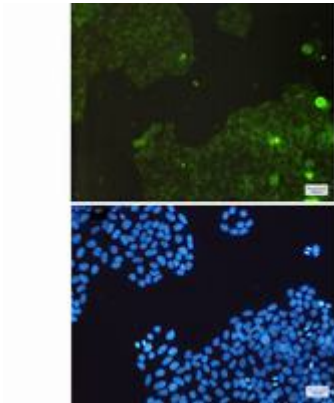
纯化: Affinity Purified

种属反应性: Human

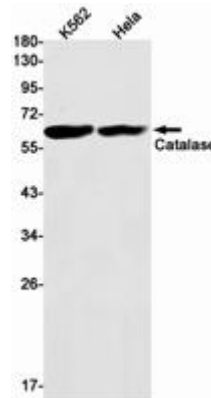
成分: PBS (without  $Mg^{2+}$  and  $Ca^{2+}$ ), pH 7.3 containing 50% glycerol, 0.5% BSA and 0.02% sodium azide

研究领域: Tags & Cell Markers

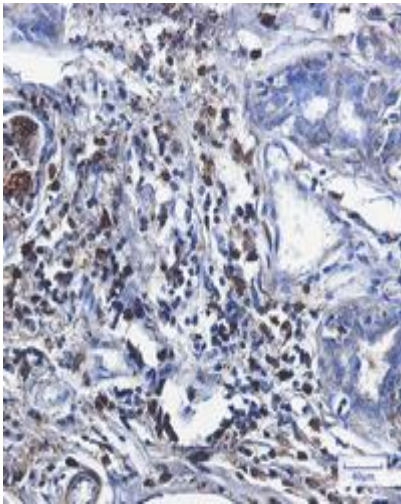
储存和运输: Store at  $-20^{\circ}C$ . Avoid repeated freezing and thawing



Immunocytochemistry analysis of Catalase (green) in HeLa using Catalase antibody, and DAPI (blue)



Western blot analysis of Catalase in K562, HeLa lysates using Catalase antibody.



Immunohistochemistry analysis of paraffin-embedded Human breast cancer using Catalase antibody. High-pressure and temperature Sodium Citrate pH 6.0 was used for antigen retrieval.