

## CASPASE 7 RABBIT MAB

货号: N263507

产品全名: Caspase 7 兔单克隆抗体

基因符号 MCH3; CMH-1; LICE2; CASP-7; ICE-LAP3

**UNIPROT ID:** P55210

**背景:** Belongs to the peptidase C14A family. Involved in the activation cascade of caspases responsible for apoptosis execution. Cleaves and activates sterol regulatory element binding proteins (SREBPs). Proteolytically cleaves poly(ADP-ribose) polymerase (PARP) at a '216-Asp--Gly-217' bond. Overexpression promotes programmed cell death.

**抗原:** A synthetic peptide of human pro Caspase-7

**经过测试的应用:** WB,IHC-P

**推荐稀释比:** WB: 1/500-1/1000 IHC: 1/50-1/100

**种属反应性:** Rabbit

**克隆性:** Rabbit Monoclonal

**克隆编号:** R03-0F2

**分子量:** Calculated MW: 34 kDa; Observed MW: 34 kDa

**亚型:** IgG

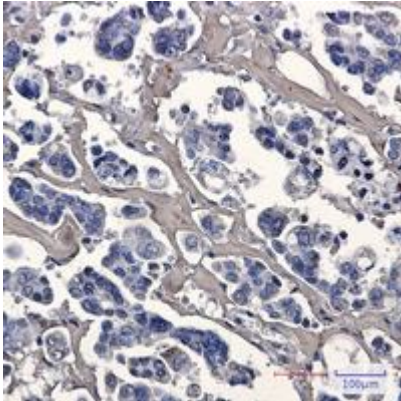
**纯化:** Affinity Purified

**种属反应性:** Human

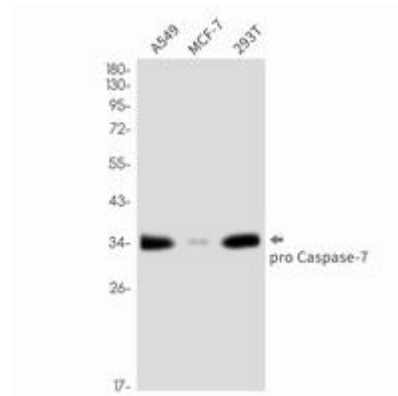
**成分:** PBS (without Mg<sup>2+</sup> and Ca<sup>2+</sup>), pH 7.3 containing 50% glycerol, 0.5% BSA and 0.02% sodium azide

**研究领域:** apoptosis - Caspase family

**储存和运输:** Store at -20°C. Avoid repeated freezing and thawing



Immunohistochemistry analysis of paraffin-embedded Human Cholangiocarcinoma using pro Caspase 7 antibody. High-pressure and temperature Sodium Citrate pH 6.0 was used for antigen retrieval.



Western blot analysis of Caspase 7 in A549, MCF-7, 293T lysates using Caspase 7 antibody.