

CASPASE 7 RABBIT MAB

货号: N263252

产品全名: Caspase 7 兔单克隆抗体

基因符号 MCH3; CMH-1; LICE2; CASP-7; ICE-LAP3

UNIPROT ID: P55210

背景: Belongs to the peptidase C14A family. Involved in the activation cascade of caspases responsible for apoptosis execution. Cleaves and activates sterol regulatory element binding proteins (SREBPs). Proteolytically cleaves poly(ADP-ribose) polymerase (PARP) at a '216-Asp--Gly-217' bond. Overexpression promotes programmed cell death.

抗原: Recombinant protein of human Caspase-7

经过测试的应用: WB,IHC-P

推荐稀释比: WB: 1/500-1/1000 IHC: 1/50-1/100

种属反应性: Rabbit

克隆性: Rabbit Monoclonal

克隆编号: R06-0F6

分子量: Calculated MW: 34 kDa; Observed MW: 34 kDa

亚型: IgG

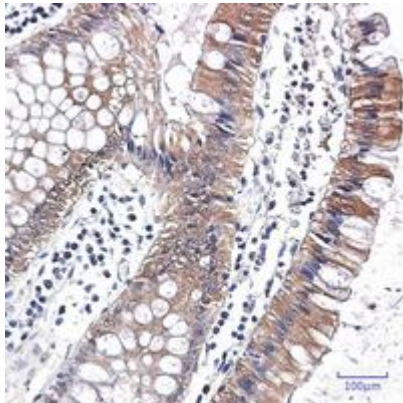
纯化: Affinity Purified

种属反应性: Human, Mouse and Rat

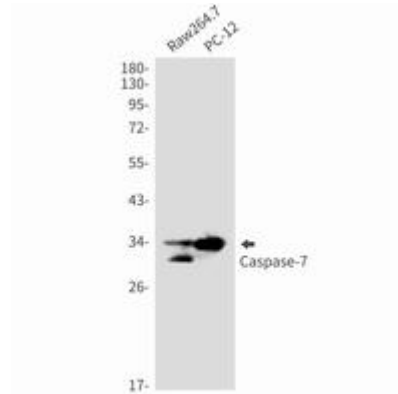
成分: PBS (without Mg²⁺ and Ca²⁺), pH 7.3 containing 50% glycerol, 0.5% BSA and 0.02% sodium azide

研究领域: apoptosis - Caspase family

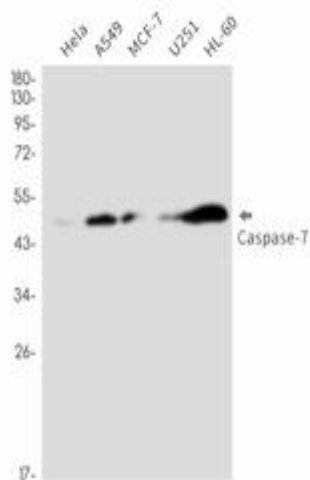
储存和运输: Store at -20°C. Avoid repeated freezing and thawing



Immunohistochemistry analysis of paraffin-embedded Human colon cancer using Caspase7 antibody. High-pressure and temperature Sodium Citrate pH 6.0 was used for antigen retrieval.



Western blot analysis of Caspase7 in Raw264.7, PC-12 lysates using Caspase 7 antibody.



Western blot analysis of Caspase7 in HeLa, A549, MCF-7, U251, HL-60 lysates using Caspase7 antibody.