

CASP9 RABBIT PAB

货号: S210055

产品全名: CASP9 兔多抗

基因符号 MCH6, APAF3, APAF-3, PPPIR56, ICE-LAP6

UNIPROT ID: P55211 (Gene Accession - BC002452)

背景: This gene encodes a member of the cysteine-aspartic acid protease (caspase) family. Sequential activation of caspases plays a central role in the execution-phase of cell apoptosis. Caspases exist as inactive proenzymes which undergo proteolytic processing at conserved aspartic residues to produce two subunits, large and small, that dimerize to form the active enzyme. This protein is processed by caspase APAF1; this step is thought to be one of the earliest in the caspase activation cascade. Alternative splicing results in two transcript variants which encode different isoforms.

抗原: Fusion protein of human CASP9

经过测试的应用: ELISA, IHC

推荐稀释比: IHC: 50-200; ELISA: 500-5000

种属反应性: Rabbit

克隆性: Rabbit Polyclonal

亚型: Immunogen-specific rabbit IgG

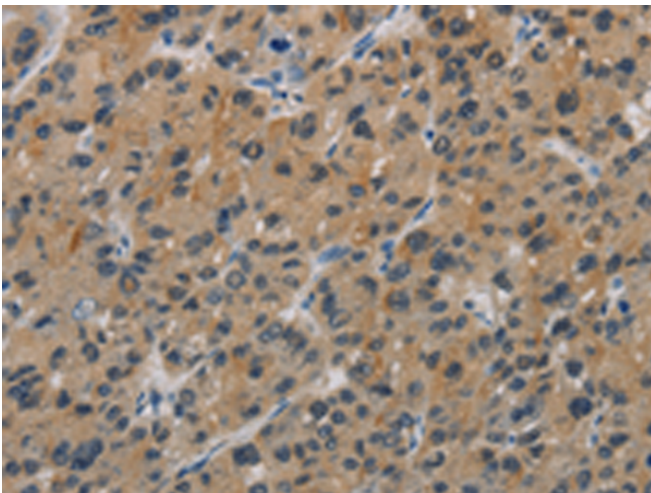
纯化: Antigen affinity purification

种属反应性: Human

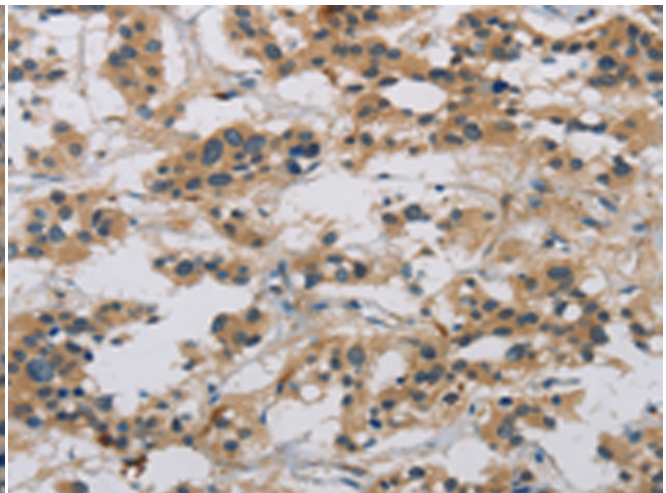
成分: PBS (without Mg²⁺ and Ca²⁺), pH 7.4, 150 mM NaCl, 0.05% Sodium Azide and 40% glycerol

研究领域: Cancer

储存和运输: Store at -20°C. Avoid repeated freezing and thawing



Immunohistochemistry analysis of paraffin-embedded Human liver cancer tissue using 210055(CASP9 Antibody) at a dilution of 1/60(Cytoplasm).



Immunohistochemistry analysis of paraffin-embedded Human thyroid cancer tissue using 210055(Anti-CASP9 Antibody) at a dilution of 1/60.