

## CASP8AP2 RABBIT PAB

货号: S220552

产品全名: CASP8AP2 兔多抗

基因符号: CED-4; FLASH; RIP25

**UNIPROT ID:** Q9UKL3 (Gene Accession - NP\_036247)

**背景:** This protein is highly similar to FLASH, a mouse apoptotic protein identified by its interaction with the death-effector domain (DED) of caspase 8. Studies of FLASH protein suggested that this protein may be a component of the death-inducing signaling complex that includes Fas receptor, Fas-binding adapter FADD, and caspase 8, and plays a regulatory role in Fas-mediated apoptosis. Alternative splicing results in multiple transcript variants encoding the same protein.

**抗原:** Synthetic peptide of human CASP8AP2

**经过测试的应用:** ELISA, IHC

**推荐稀释比:** IHC: 25-100; ELISA: 1000-2000

**种属反应性:** Rabbit

**克隆性:** Rabbit Polyclonal

**亚型:** Immunogen-specific rabbit IgG

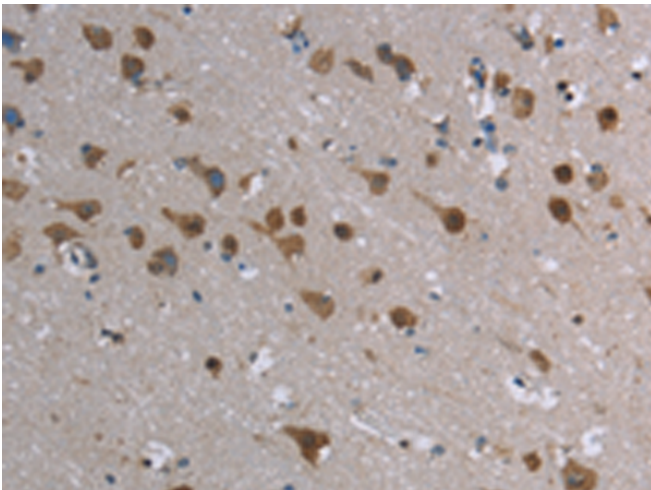
**纯化:** Antigen affinity purification

**种属反应性:** Human, Mouse

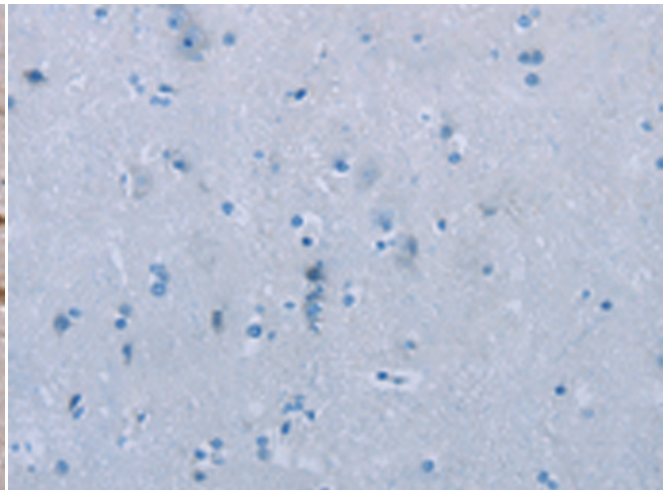
**成分:** PBS (without Mg<sup>2+</sup> and Ca<sup>2+</sup>), pH 7.4, 150 mM NaCl, 0.05% Sodium Azide and 40% glycerol

**研究领域:** Cancer

**储存和运输:** Store at -20°C. Avoid repeated freezing and thawing



Immunohistochemistry analysis of paraffin embedded Human brain tissue using 220552(CASP8AP2 Antibody) at a dilution of 1/20(Cytoplasm and Nucleus).



In comparison with the IHC on the left, the same paraffin-embedded Human brain tissue is first treated with the synthetic peptide and then with 220552(Anti-CASP8AP2 Antibody) at dilution 1/20.