

CASP3 RABBIT PAB

货号: S216253

产品全名: CASP3 兔多抗

基因符号: CPP32; SCA-1; CPP32B

UNIPROT ID: P42574 (Gene Accession - BC016926)

背景: The protein encoded by this gene is a cysteine-aspartic acid protease that plays a central role in the execution-phase of cell apoptosis. The encoded protein cleaves and inactivates poly(ADP-ribose) polymerase while it cleaves and activates sterol regulatory element binding proteins as well as caspases 6, 7, and 9. This protein itself is processed by caspases 8, 9, and 10. It is the predominant caspase involved in the cleavage of amyloid-beta 4A precursor protein, which is associated with neuronal death in Alzheimer's disease.

抗原: Fusion protein of human CASP3

经过测试的应用: ELISA, WB, IHC

推荐稀释比: IHC: 50-200;WB: 500-2000;ELISA: 5000-10000

种属反应性: Rabbit

克隆性: Rabbit Polyclonal

亚型: Immunogen-specific rabbit IgG

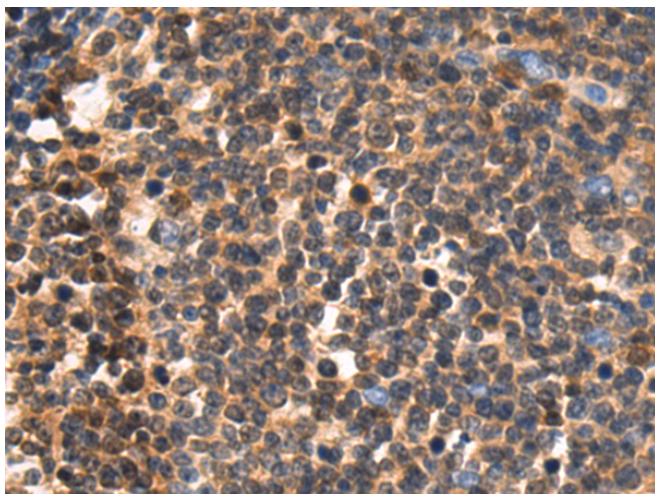
纯化: Antigen affinity purification

种属反应性: Human, Mouse, Rat

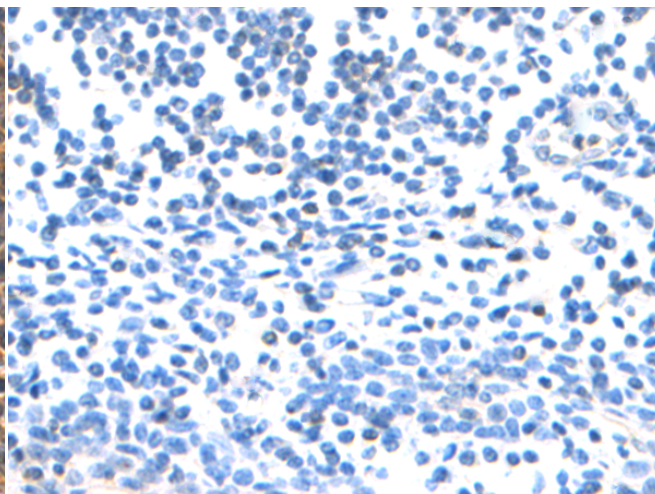
成分: PBS (without Mg²⁺ and Ca²⁺), pH 7.4, 150 mM NaCl, 0.05% Sodium Azide and 40% glycerol

研究领域: Cancer, Cell Biology, Neuroscience

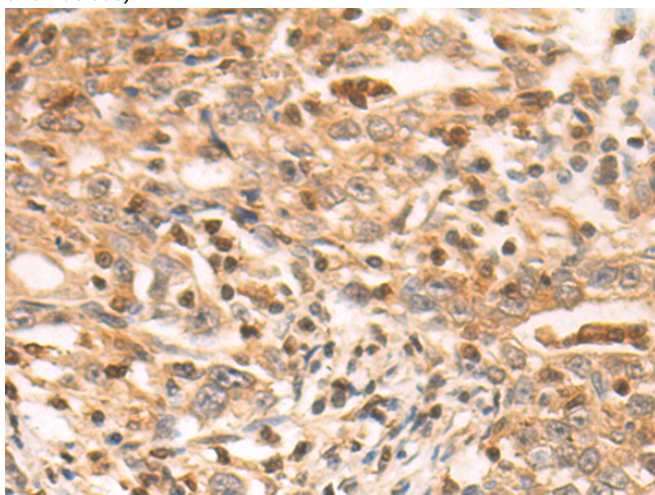
储存和运输: Store at -20°C. Avoid repeated freezing and thawing



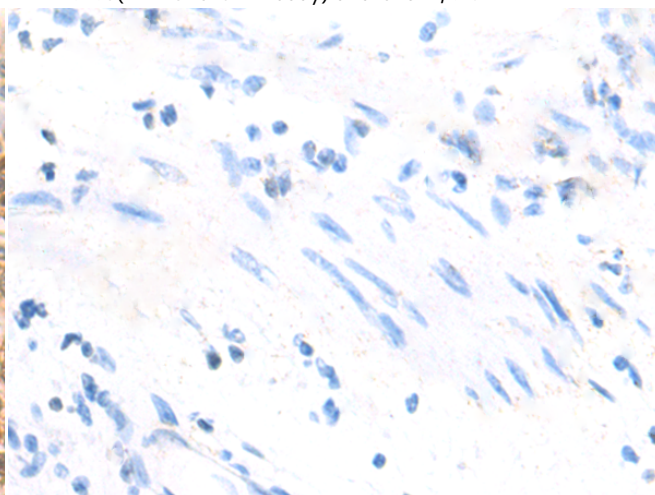
Immunohistochemistry analysis of paraffin embedded Human tonsil tissue using 216253(CASP3 Antibody) at a dilution of 1/60(Cytoplasm and Nucleus).



In comparison with the IHC on the left, the same paraffin-embedded Human tonsil tissue is first treated with the fusion protein and then with 216253(Anti-CASP3 Antibody) at dilution 1/60.

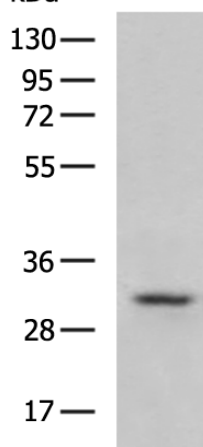


The image on the left is immunohistochemistry of paraffin-embedded Human gastric cancer tissue using 216253(Anti-CASP3 Antibody) at a dilution of 1/60.



In comparison with the IHC on the left, the same paraffin-embedded Human gastric cancer tissue is first treated with fusion protein and then with D220074(Anti-CASP3 Antibody) at dilution 1/60.

kDa



Gel: 8%SDS-PAGE, Lysate: 40 µg;
 Lane: THP-1 apoptotic cells after 48 hours of starvation;
 Primary antibody: 216253(CASP3 Antibody) at dilution 1/400;
 Secondary antibody: HRP-conjugated Goat anti rabbit IgG at 1/5000 dilution;
 Exposure time: 7 seconds



Product Description

Pioneering GTPase and Oncogene Product Development since 2010
