

## CASP14 RABBIT PAB

货号: S216258

产品全名: CASP14 兔多抗

基因符号: ARCI12

**UNIPROT ID:** P31944 (Gene Accession - BC069541)

**背景:** This gene encodes a member of the cysteine-aspartic acid protease (caspase) family. Sequential activation of caspases plays a central role in the execution-phase of cell apoptosis. Caspases exist as inactive proenzymes which undergo proteolytic processing at conserved aspartic residues to produce two subunits, large and small, that dimerize to form the active enzyme. This caspase has been shown to be processed and activated by caspase 8 and caspase 10 in vitro, and by anti-Fas agonist antibody or TNF-related apoptosis inducing ligand in vivo. The expression and processing of this caspase may be involved in keratinocyte terminal differentiation, which is important for the formation of the skin barrier.

**抗原:** Fusion protein of human CASP14

**经过测试的应用:** ELISA, WB, IHC

**推荐稀释比:** IHC: 50-200;WB: 1000-5000;ELISA: 5000-10000

**种属反应性:** Rabbit

**克隆性:** Rabbit Polyclonal

**亚型:** Immunogen-specific rabbit IgG

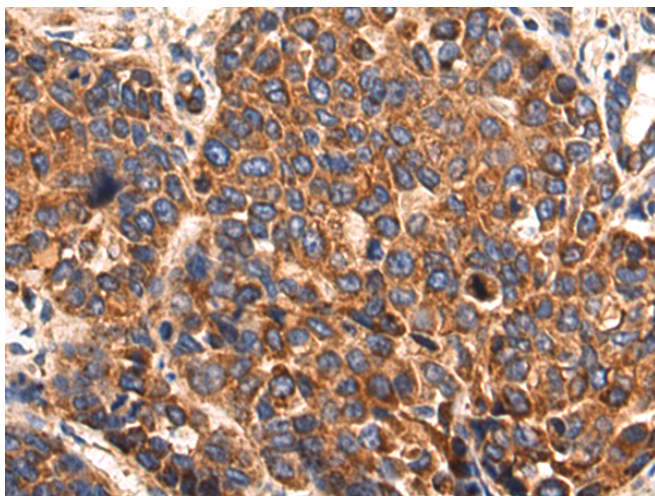
**纯化:** Antigen affinity purification

**种属反应性:** Human

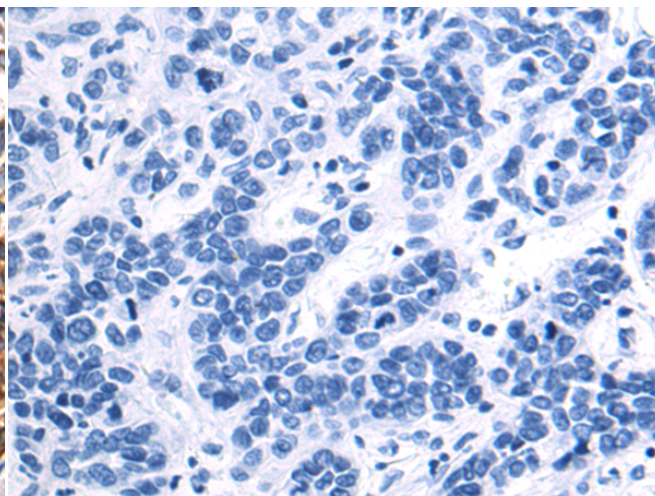
**成分:** PBS (without Mg<sup>2+</sup> and Ca<sup>2+</sup>), pH 7.4, 150 mM NaCl, 0.05% Sodium Azide and 40% glycerol

**研究领域:** Cancer

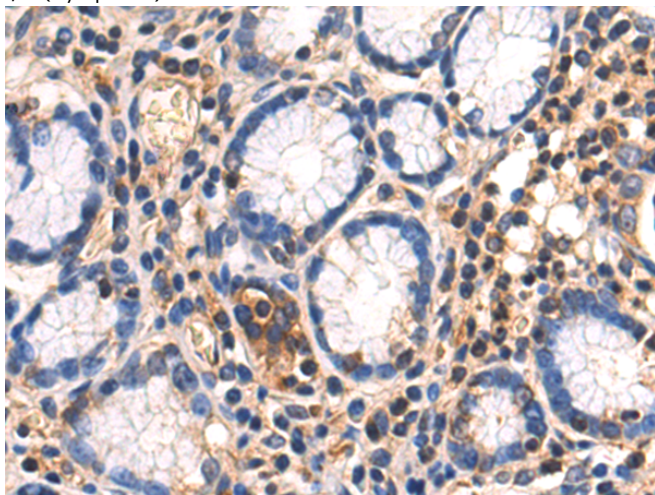
**储存和运输:** Store at -20°C. Avoid repeated freezing and thawing



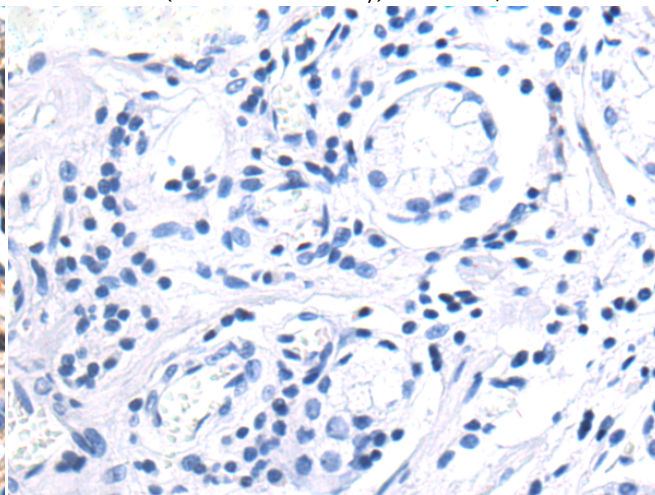
Immunohistochemistry analysis of paraffin embedded Human liver cancer tissue using 216258(CASP14 Antibody) at a dilution of 1/70(Cytoplasm).



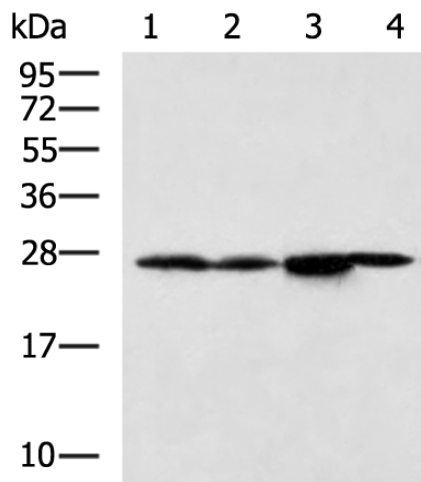
In comparison with the IHC on the left, the same paraffin-embedded Human liver cancer tissue is first treated with the fusion protein and then with 216258(Anti-CASP14 Antibody) at dilution 1/70.



The image on the left is immunohistochemistry of paraffin-embedded Human gastric cancer tissue using 216258(Anti-CASP14 Antibody) at a dilution of 1/70.



In comparison with the IHC on the left, the same paraffin-embedded Human gastric cancer tissue is first treated with fusion protein and then with D220081(Anti-CASP14 Antibody) at dilution 1/70.



Gel: 12%SDS-PAGE, Lysate: 40 µg;  
 Lane 1-4: A549, A375, 231, LOVO cell lysates;  
 Primary antibody: 216258(CASP14 Antibody) at dilution 1/1000;  
 Secondary antibody: HRP-conjugated Goat anti rabbit IgG at 1/5000 dilution;  
 Exposure time: 20 seconds



# Product Description

Pioneering GTPase and Oncogene Product Development since 2010

---