

## CASEIN KINASE 1 ALPHA RABBIT MAB

货号: N261957

产品全名: Casein Kinase 1 alpha 兔单克隆抗体

基因符号 CSNK1A1; Casein kinase I isoform alpha; CKI-alpha; CKI

**UNIPROT ID:** P48729

背景: Casein kinases are operationally defined by their preferential utilization of acidic proteins such as caseins as substrates. It can phosphorylate a large number of proteins. Participates in Wnt signaling. Phosphorylates CTNNB1 at 'Ser-45'. May play a role in segregating chromosomes during mitosis.

抗原: A synthetic peptide of human Casein Kinase 1 alpha

经过测试的应用: WB,IP

推荐稀释比: WB: 1/500-1/1000 IP: 1/20

种属反应性: Rabbit

克隆性: Rabbit Monoclonal

克隆编号: R05-6C6

分子量: Calculated MW: 39 kDa; Observed MW: 34 kDa

亚型: IgG

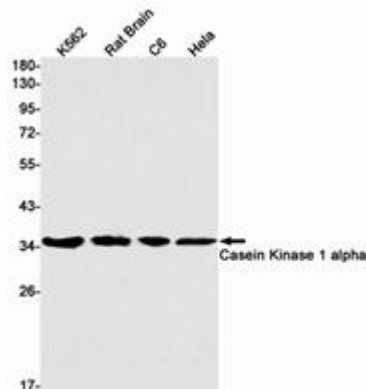
纯化: Affinity Purified

种属反应性: Human,Rat

成分: PBS (without Mg<sup>2+</sup> and Ca<sup>2+</sup>), pH 7.3 containing 50% glycerol, 0.5% BSA and 0.02% sodium azide

研究领域: Signal Transduction

储存和运输: Store at -20°C. Avoid repeated freezing and thawing



Western blot analysis of Casein Kinase 1 alpha in K562, rat Brain, C6, HeLa lysates using Casein Kinase 1 alpha antibody.



# Product Description

Pioneering GTPase and Oncogene Product Development since 2010

---