

CARD14 RABBIT PAB

货号: S217241

产品全名: CARD14 兔多抗

基因符号: PRP; PSSI; BIMP2; CARMA2; PSORS2

UNIPROT ID: Q9BXL6 (Gene Accession - BC018142)

背景: This gene encodes a caspase recruitment domain-containing protein that is a member of the membrane-associated guanylate kinase (MAGUK) family of proteins. Members of this protein family are scaffold proteins that are involved in a diverse array of cellular processes including cellular adhesion, signal transduction and cell polarity control. This protein has been shown to specifically interact with BCL10, a protein known to function as a positive regulator of cell apoptosis and NF-kappaB activation. Alternate splicing results in multiple transcript variants.

抗原: Fusion protein of human CARD14

经过测试的应用: ELISA, WB, IHC

推荐稀释比: IHC: 100-300;WB: 1000-5000;ELISA: 5000-10000

种属反应性: Rabbit

克隆性: Rabbit Polyclonal

亚型: Immunogen-specific rabbit IgG

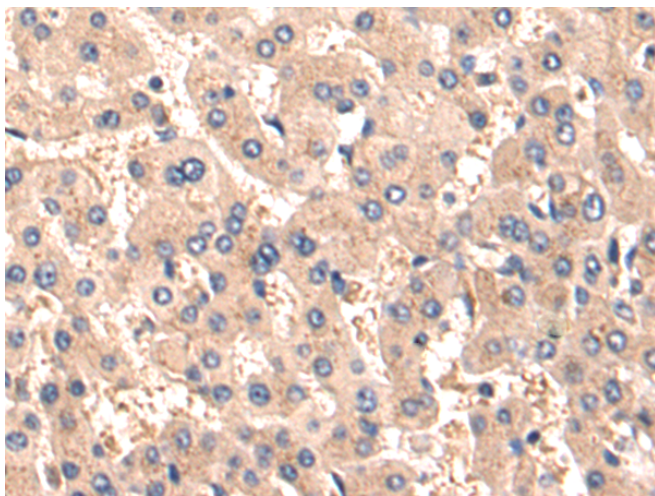
纯化: Antigen affinity purification

种属反应性: Human, Mouse

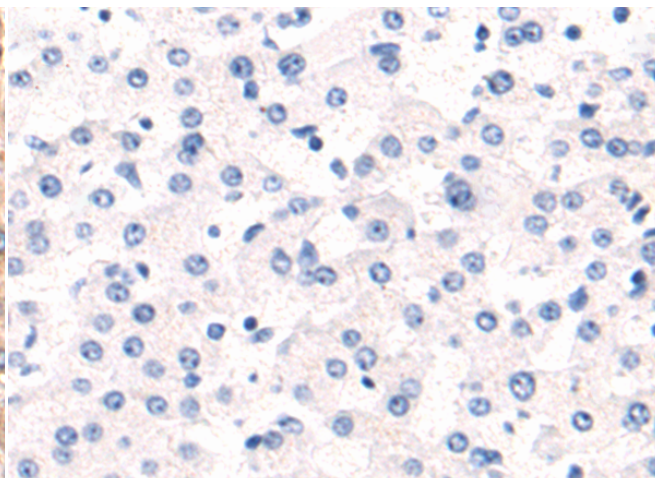
成分: PBS (without Mg²⁺ and Ca²⁺), pH 7.4, 150 mM NaCl, 0.05% Sodium Azide and 40% glycerol

研究领域: Cancer


储存和运输: Store at -20°C. Avoid repeated freezing and thawing

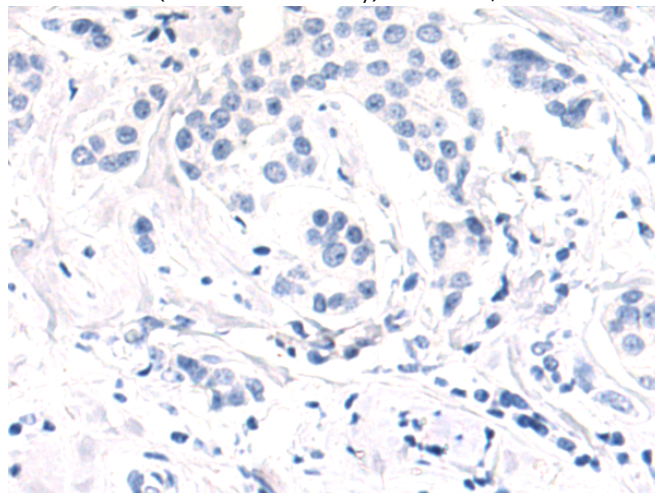


Immunohistochemistry analysis of paraffin embedded Human liver cancer tissue using 217241(CARD14 Antibody) at a dilution of 1/120(Cytoplasm).

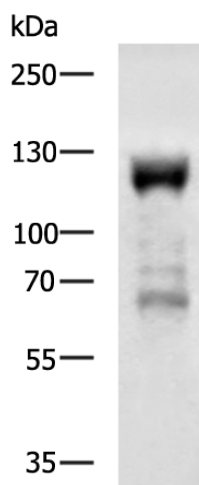


In comparison with the IHC on the left, the same paraffin-embedded Human liver cancer tissue is first treated with the fusion protein and then with 217241(Anti-CARD14 Antibody) at dilution 1/120.

 The image on the left is immunohistochemistry of paraffin-embedded Human breast cancer tissue using 217241(Anti-CARD14 Antibody) at a dilution of 1/120.



In comparison with the IHC on the left, the same paraffin-embedded Human breast cancer tissue is first treated with fusion protein and then with D222030(Anti-CARD14 Antibody) at dilution 1/120.



Gel: 6%SDS-PAGE, Lysate: 40 µg;
Lane: Mouse skin tissue lysate;
Primary antibody: 217241(CARD14 Antibody) at dilution 1/2000;
Secondary antibody: HRP-conjugated Goat anti rabbit IgG at 1/5000 dilution;
Exposure time: 1 minute



Product Description

Pioneering GTPase and Oncogene Product Development since 2010
