

CARCINO EMBRYONIC ANTIGEN CEA (2A8) MOUSE MAB

货号: N261222

产品全名: Carcino Embryonic Antigen CEA (2A8) 小鼠单抗

基因符号 CEACAM5; CEA; Carcinoembryonic antigen-related cell adhesion molecule 5; Carcinoembryonic antigen; CEA; Meconium antigen 100; CD66e

UNIPROT ID: P06731

背景: Carcinoembryonic antigen (CEA), also known as CD66e or CEACAM5, is a 180-200 kDa cell surface glycoprotein whose expression is elevated in intestinal carcinomas and other tumors. CEA mediates cell adhesion, though little more is known about its biological activity.

抗原: Synthetic Peptide of Carcinoembryonic Antigen

经过测试的应用: IHC-P, ICC/IF

推荐稀释比: IHC: 1/50-1/100 IF: 1/50-1/200

种属反应性: Mouse

克隆性: Mouse Monoclonal

克隆编号: 2A8-5C1-10C7

分子量: -

亚型: IgG1

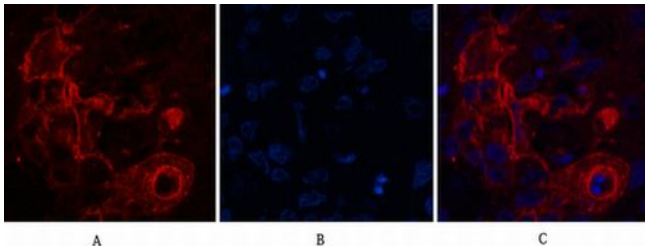
纯化: Affinity Purified

种属反应性: Human

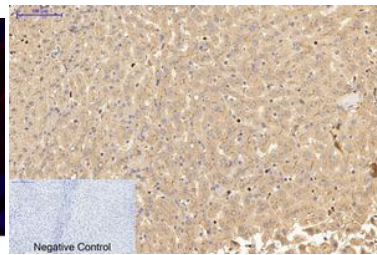
成分: PBS (without Mg²⁺ and Ca²⁺), pH 7.3 containing 50% glycerol, 0.5% BSA and 0.02% sodium azide

研究领域: Tags & Cell Markers

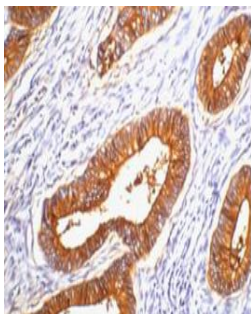
储存和运输: Store at -20°C. Avoid repeated freezing and thawing



Immunofluorescence analysis of Carcino Embryonic Antigen CEA (2A8) in Human lung cancer tissue using Carcino Embryonic Antigen CEA (2A8) antibody (red), and DAPI (blue).



Immunohistochemistry analysis of paraffin-embedded Human liver tissue using Carcino Embryonic Antigen CEA (2A8) antibody. High-pressure and temperature Sodium Citrate pH 6.0 was used for antigen retrieval. Negative control was used by secondary antibody only.



Immunohistochemistry analysis of paraffin-embedded Human colon cancer tissue using Carcino Embryonic Antigen CEA (2A8) antibody. High-pressure and temperature Sodium Citrate pH 6.0 was used for antigen retrieval.