

## CAPRIN1 RABBIT PAB

货号: S210917

产品全名: CAPRIN1 兔多抗

基因符号: MIIS1; GPIAP1; RNG105; GPIP137; GRIP137; p137GPI

**UNIPROT ID:** Q14444 (Gene Accession - BC001731)

**背景:** May regulate the transport and translation of mRNAs of proteins involved in synaptic plasticity in neurons and cell proliferation and migration in multiple cell types. Binds directly and selectively to MYC and CCND2 RNAs. In neuronal cells, directly binds to several mRNAs associated with RNA granules, including BDNF, CAMK2A, CREB1, MAP2, NTRK2 mRNAs, as well as to GRIN1 and KPNB1 mRNAs, but not to rRNAs.

**抗原:** Fusion protein of human CAPRIN1

**经过测试的应用:** ELISA, WB, IHC

**推荐稀释比:** IHC: 50-200;WB: 500-2000;ELISA: 5000-10000

**种属反应性:** Rabbit

**克隆性:** Rabbit Polyclonal

**亚型:** Immunogen-specific rabbit IgG

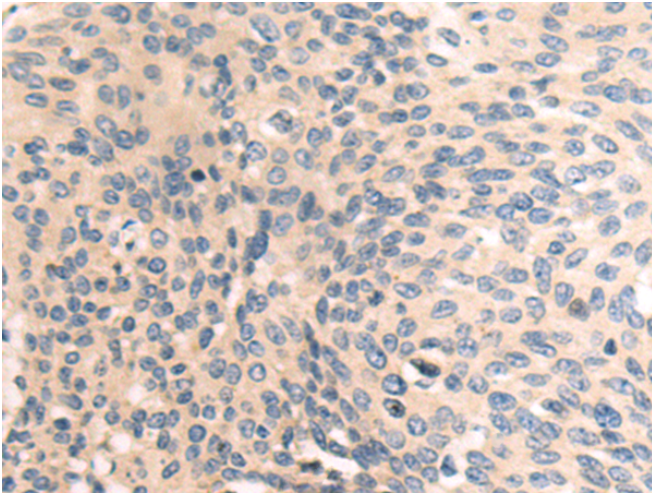
**纯化:** Antigen affinity purification

**种属反应性:** Human, Mouse, Rat

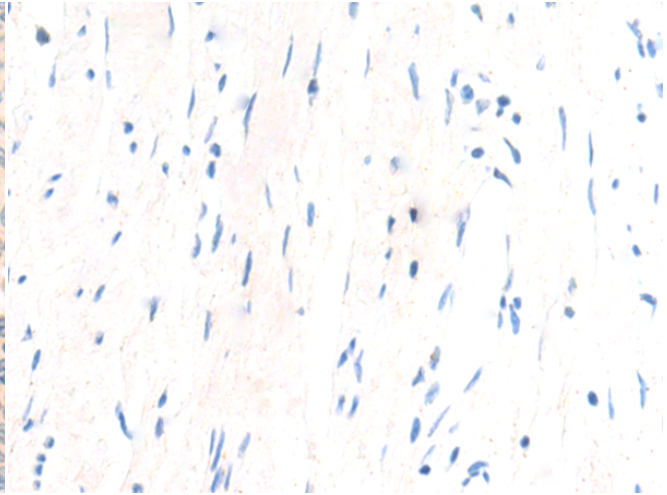
**成分:** PBS (without Mg<sup>2+</sup> and Ca<sup>2+</sup>), pH 7.4, 150 mM NaCl, 0.05% Sodium Azide and 40% glycerol

**研究领域:** Cancer

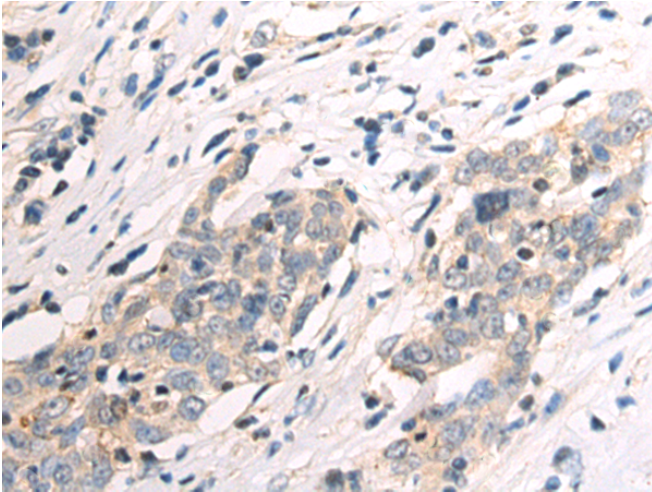
**储存和运输:** Store at -20°C. Avoid repeated freezing and thawing



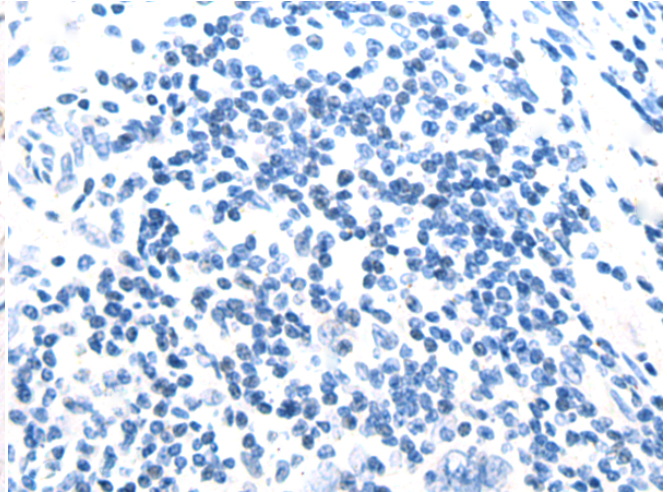
Immunohistochemistry analysis of paraffin embedded Human cervical cancer tissue using 210917(CAPRINI Antibody) at a dilution of 1/50(Cytoplasm).



In comparison with the IHC on the left, the same paraffin-embedded Human cervical cancer tissue is first treated with the fusion protein and then with 210917(Anti-CAPRINI Antibody) at dilution 1/50.

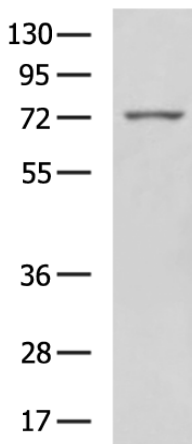


The image on the left is immunohistochemistry of paraffin-embedded Human esophagus cancer tissue using 210917(Anti-CAPRINI Antibody) at a dilution of 1/50.



In comparison with the IHC on the left, the same paraffin-embedded Human esophagus cancer tissue is first treated with fusion protein and then with D121882(Anti-CAPRINI Antibody) at dilution 1/50.

kDa



Gel: 6%SDS-PAGE, Lysate: 40 µg;  
Lane: RAW264.7 cell lysate;  
Primary antibody: 210917(CAPRINI Antibody) at dilution 1/600;  
Secondary antibody: HRP-conjugated Goat anti rabbit IgG at 1/5000 dilution;  
Exposure time: 10 seconds



# Product Description

Pioneering GTPase and Oncogene Product Development since 2010

---