

CAPN2 RABBIT PAB

货号: S216381

产品全名: CAPN2 兔多抗

基因符号: CANP2; mCANP; CANPL2; CANPml

UNIPROT ID: P17655 (Gene Accession - BC021303)

背景: The calpains, calcium-activated neutral proteases, are nonlysosomal, intracellular cysteine proteases. The mammalian calpains include ubiquitous, stomach-specific, and muscle-specific proteins. The ubiquitous enzymes consist of heterodimers with distinct large, catalytic subunits associated with a common small, regulatory subunit. This gene encodes the large subunit of the ubiquitous enzyme, calpain 2. Multiple heterogeneous transcriptional start sites in the 5' UTR have been reported. Two transcript variants encoding different isoforms have been found for this gene.

抗原: Fusion protein of human CAPN2

经过测试的应用: ELISA, WB, IHC

推荐稀释比: IHC: 100-300;WB: 1000-5000;ELISA: 5000-10000

种属反应性: Rabbit

克隆性: Rabbit Polyclonal

亚型: Immunogen-specific rabbit IgG

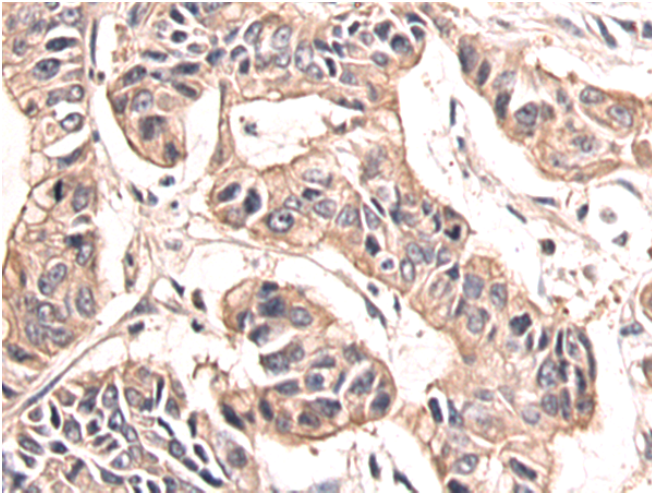
纯化: Antigen affinity purification

种属反应性: Human, Mouse, Rat

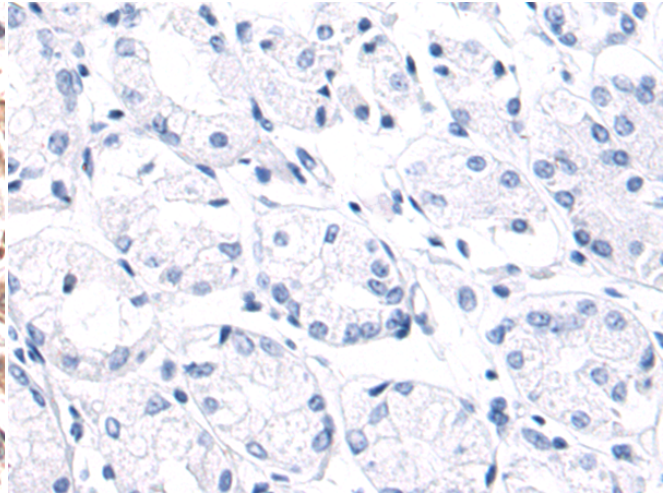
成分: PBS (without Mg²⁺ and Ca²⁺), pH 7.4, 150 mM NaCl, 0.05% Sodium Azide and 40% glycerol

研究领域: Signal Transduction, Cancer, Cardiovascular, Metabolism, Cell Biology

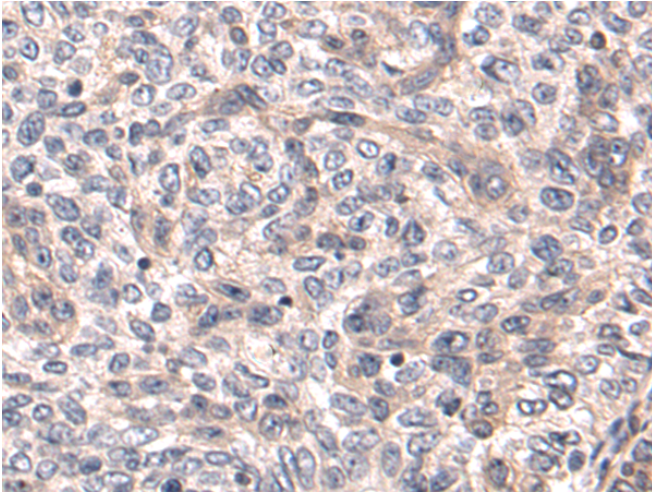
储存和运输: Store at -20°C. Avoid repeated freezing and thawing



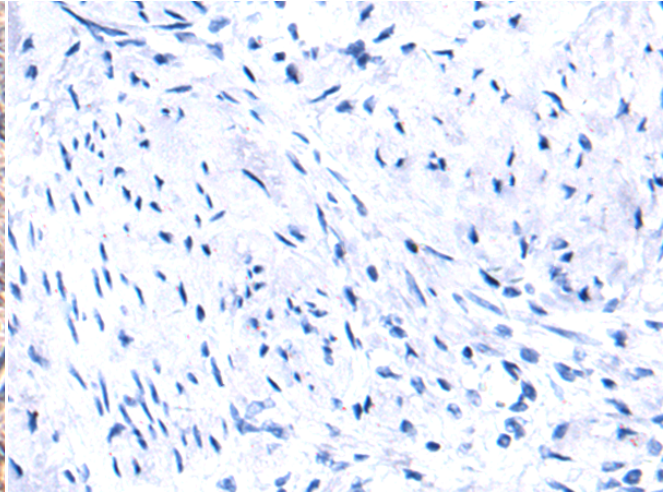
Immunohistochemistry analysis of paraffin embedded Human gastric cancer tissue using 216381(CAPN2 Antibody) at a dilution of 1/100(Cytoplasm).



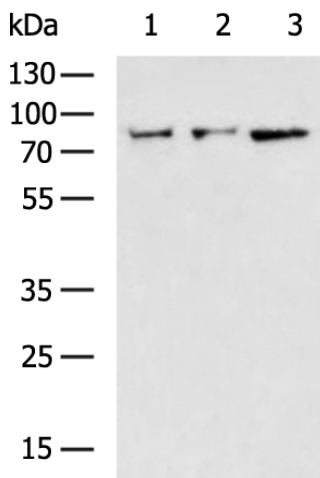
In comparison with the IHC on the left, the same paraffin-embedded Human gastric cancer tissue is first treated with the fusion protein and then with 216381(Anti-CAPN2 Antibody) at dilution 1/100.



The image on the left is immunohistochemistry of paraffin-embedded Human cervical cancer tissue using 216381(Anti-CAPN2 Antibody) at a dilution of 1/100.



In comparison with the IHC on the left, the same paraffin-embedded Human cervical cancer tissue is first treated with fusion protein and then with D220329(Anti-CAPN2 Antibody) at dilution 1/100.



Gel: 8%SDS-PAGE, Lysate: 40 µg;
Lane 1-3: A549, HepG2, Hela cell lysates;
Primary antibody: 216381(CAPN2 Antibody) at dilution 1/1200;
Secondary antibody: HRP-conjugated Goat anti rabbit IgG at 1/5000 dilution;
Exposure time: 5 seconds



Product Description

Pioneering GTPase and Oncogene Product Development since 2010
