

CAPN1 RABBIT PAB

货号: S216380

产品全名: CAPN1 兔多抗

基因符号: CANP; muCL; CANP1; SPG76; CANPL1; muCANP

UNIPROT ID: P07384 (Gene Accession - BC017200)

背景: The calpains, calcium-activated neutral proteases, are nonlysosomal, intracellular cysteine proteases. The mammalian calpains include ubiquitous, stomach-specific, and muscle-specific proteins. The ubiquitous enzymes consist of heterodimers with distinct large, catalytic subunits associated with a common small, regulatory subunit. This gene encodes the large subunit of the ubiquitous enzyme, calpain 1. Several transcript variants encoding two different isoforms have been found for this gene.

抗原: Fusion protein of human CAPN1

经过测试的应用: ELISA, WB, IHC

推荐稀释比: IHC: 50-200;WB: 1000-5000;ELISA: 5000-10000

种属反应性: Rabbit

克隆性: Rabbit Polyclonal

亚型: Immunogen-specific rabbit IgG

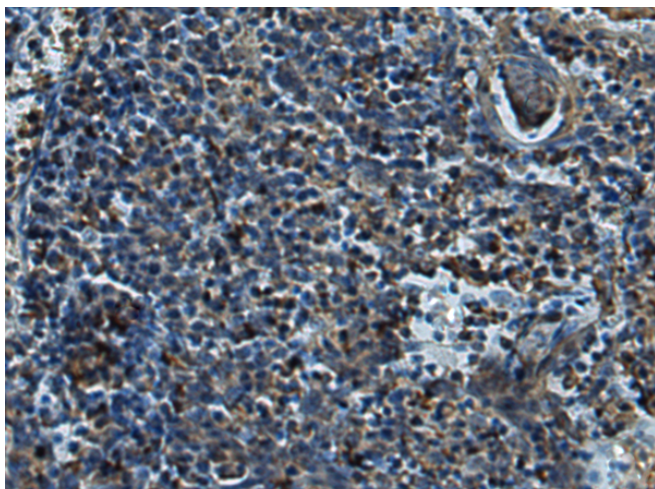
纯化: Antigen affinity purification

种属反应性: Human, Mouse, Rat

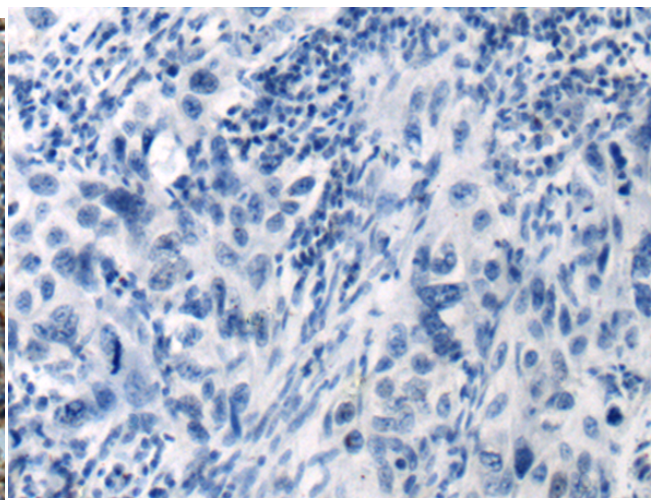
成分: PBS (without Mg²⁺ and Ca²⁺), pH 7.4, 150 mM NaCl, 0.05% Sodium Azide and 40% glycerol

研究领域: Signal Transduction, Cell Biology

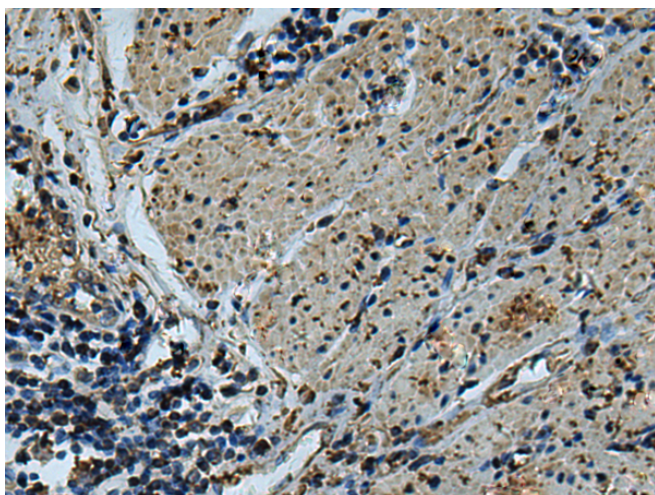
储存和运输: Store at -20°C. Avoid repeated freezing and thawing



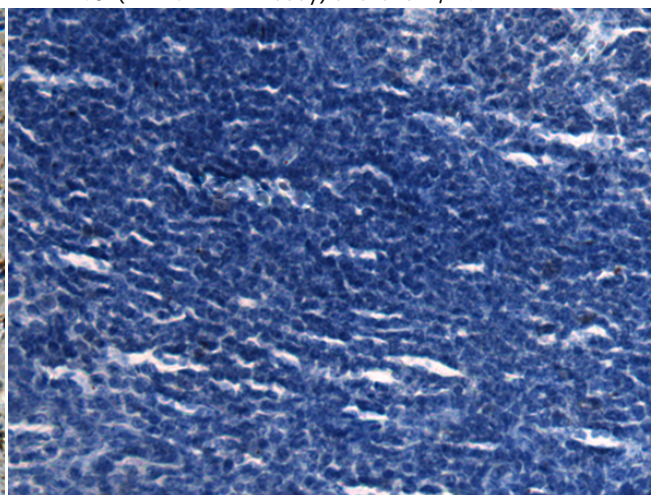
Immunohistochemistry analysis of paraffin embedded Human tonsil tissue using 216380(CAPNI Antibody) at a dilution of 1/75(Cytoplasm).



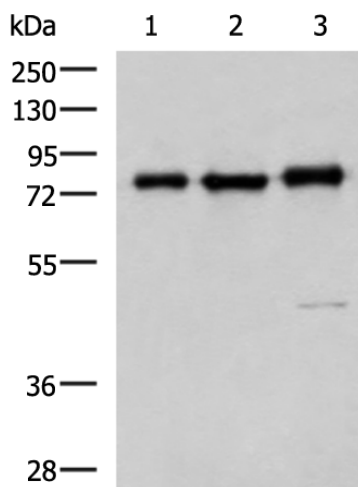
In comparison with the IHC on the left, the same paraffin-embedded Human tonsil tissue is first treated with the fusion protein and then with 216380(Anti-CAPNI Antibody) at dilution 1/75.



The image on the left is immunohistochemistry of paraffin-embedded Human esophagus cancer tissue using 216380(Anti-CAPNI Antibody) at a dilution of 1/75.



In comparison with the IHC on the left, the same paraffin-embedded Human esophagus cancer tissue is first treated with fusion protein and then with D220328(Anti-CAPNI Antibody) at dilution 1/75.



Gel: 6%SDS-PAGE, Lysate: 40 µg;
 Lane 1-3: K562, Jurkat and Hela cell lysates;
 Primary antibody: 216380(CAPNI Antibody) at dilution 1/1000;
 Secondary antibody: HRP-conjugated Goat anti rabbit IgG at 1/5000 dilution;
 Exposure time: 30 seconds



Product Description

Pioneering GTPase and Oncogene Product Development since 2010
