

CAP2 RABBIT MAB

货号: N263133

产品全名: CAP2 兔单克隆抗体

基因符号 CAP 2; Adenylyl cyclase-associated protein 2

UNIPROT ID: P40123

背景: May have a regulatory bifunctional role.

抗原: A synthetic peptide of human CAP2

经过测试的应用: WB,IP

推荐稀释比: WB: 1/500-1/1000 IP: 1/20

种属反应性: Rabbit

克隆性: Rabbit Monoclonal

克隆编号: R04-3D1

分子量: Calculated MW: 53 kDa; Observed MW: 53 kDa

亚型: IgG

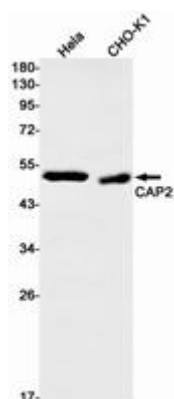
纯化: Affinity Purified

种属反应性: Human

成分: PBS (without Mg²⁺ and Ca²⁺), pH 7.3 containing 50% glycerol, 0.5% BSA and 0.02% sodium azide

研究领域: Signal Transduction

储存和运输: Store at -20°C. Avoid repeated freezing and thawing



Western blot analysis of CAP2 in HeLa, CHO-K1 lysates using CAP2 antibody.