

## CAP1 RABBIT PAB

货号: S216388

产品全名: CAP1 兔多抗

基因符号: CAP; CAP1-PEN

**UNIPROT ID:** Q01518 (Gene Accession - BC013963)

**背景:** The protein encoded by this gene is related to the *S. cerevisiae* CAP protein, which is involved in the cyclic AMP pathway. The human protein is able to interact with other molecules of the same protein, as well as with CAP2 and actin. Alternatively spliced transcript variants encoding different isoforms have been identified.

**抗原:** Fusion protein of human CAP1

**经过测试的应用:** ELISA, WB, IHC

**推荐稀释比:** IHC: 50-200;WB: 1000-5000;ELISA: 5000-10000

**种属反应性:** Rabbit

**克隆性:** Rabbit Polyclonal

**亚型:** Immunogen-specific rabbit IgG

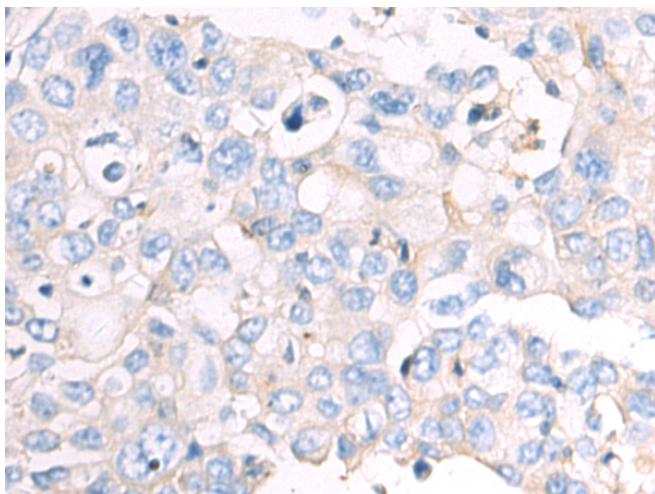
**纯化:** Antigen affinity purification

**种属反应性:** Human, Mouse, Rat

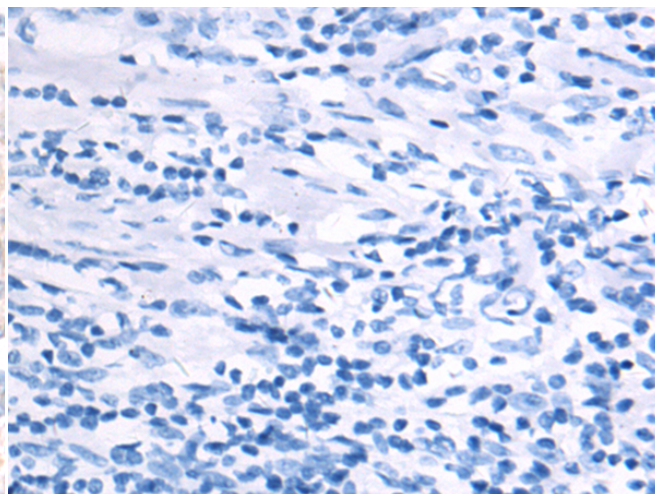
**成分:** PBS (without Mg<sup>2+</sup> and Ca<sup>2+</sup>), pH 7.4, 150 mM NaCl, 0.05% Sodium Azide and 40% glycerol

**研究领域:** Signal Transduction, Epigenetics and Nuclear Signaling

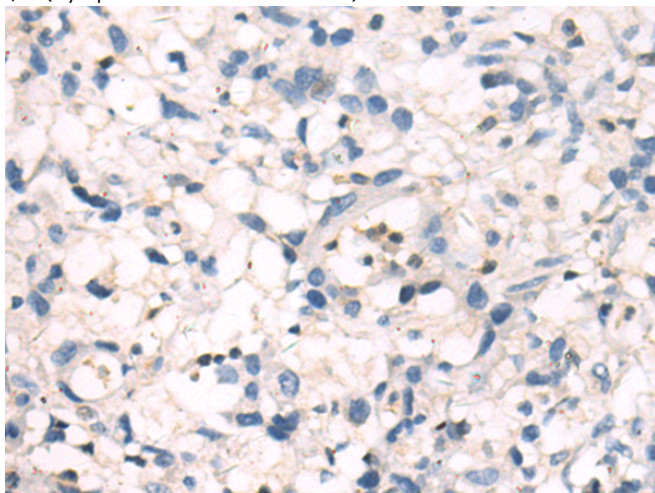
**储存和运输:** Store at -20°C. Avoid repeated freezing and thawing



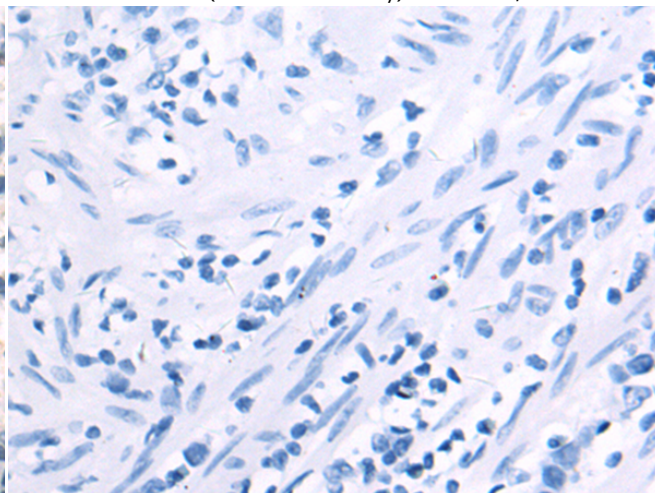
Immunohistochemistry analysis of paraffin embedded Human cervical cancer tissue using 216388 (CAPI Antibody) at a dilution of 1/90 (Cytoplasm and Cell membrane).



In comparison with the IHC on the left, the same paraffin-embedded Human cervical cancer tissue is first treated with the fusion protein and then with 216388 (Anti-CAPI Antibody) at dilution 1/90.

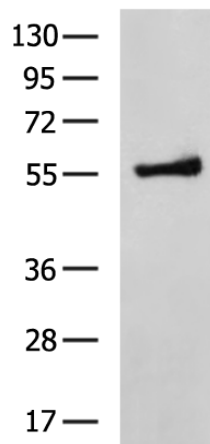


The image on the left is immunohistochemistry of paraffin-embedded Human gastric cancer tissue using 216388 (Anti-CAPI Antibody) at a dilution of 1/90.



In comparison with the IHC on the left, the same paraffin-embedded Human gastric cancer tissue is first treated with fusion protein and then with D220339 (Anti-CAPI Antibody) at dilution 1/90.

kDa



Gel: 8%SDS-PAGE, Lysate: 40 µg;  
Lane: 293T cell lysate;  
Primary antibody: 216388 (CAPI Antibody) at dilution 1/1000;  
Secondary antibody: HRP-conjugated Goat anti rabbit IgG at 1/5000 dilution;  
Exposure time: 90 seconds



# Product Description

Pioneering GTPase and Oncogene Product Development since 2010

---