

## CANX RABBIT PAB

货号: S217235

产品全名: CANX 兔多抗

基因符号: CNX; P90; IP90

**UNIPROT ID:** P27824 (Gene Accession - BC003552)

**背景:** This gene encodes a member of the calnexin family of molecular chaperones. The encoded protein is a calcium-binding, endoplasmic reticulum (ER)-associated protein that interacts transiently with newly synthesized N-linked glycoproteins, facilitating protein folding and assembly. It may also play a central role in the quality control of protein folding by retaining incorrectly folded protein subunits within the ER for degradation. Alternatively spliced transcript variants encoding the same protein have been described.

**抗原:** Fusion protein of human CANX

**经过测试的应用:** ELISA, WB, IHC

**推荐稀释比:** IHC: 50-200;WB: 500-2000;ELISA: 2000-5000

**种属反应性:** Rabbit

**克隆性:** Rabbit Polyclonal

**亚型:** Immunogen-specific rabbit IgG

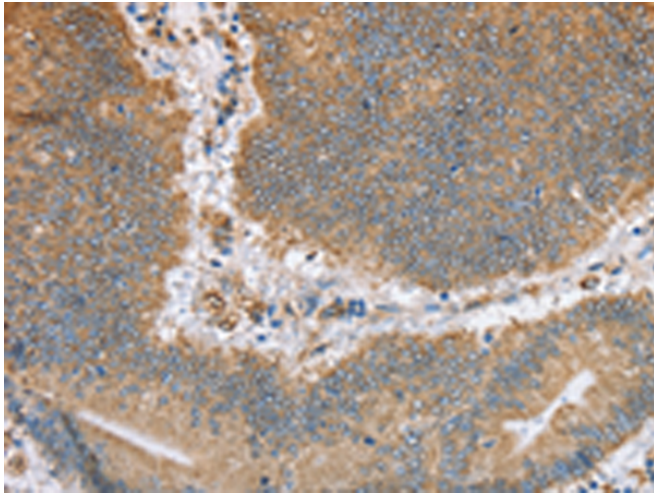
**纯化:** Antigen affinity purification

**种属反应性:** Human, Mouse, Rat

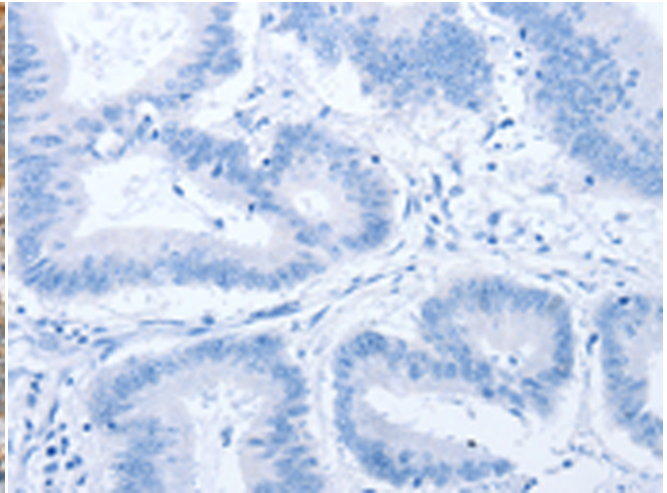
**成分:** PBS (without Mg<sup>2+</sup> and Ca<sup>2+</sup>), pH 7.4, 150 mM NaCl, 0.05% Sodium Azide and 40% glycerol

**研究领域:** Neuroscience

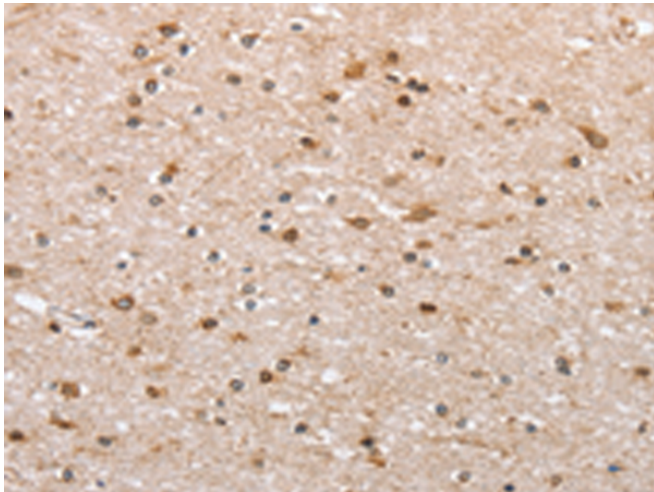
**储存和运输:** Store at -20°C. Avoid repeated freezing and thawing



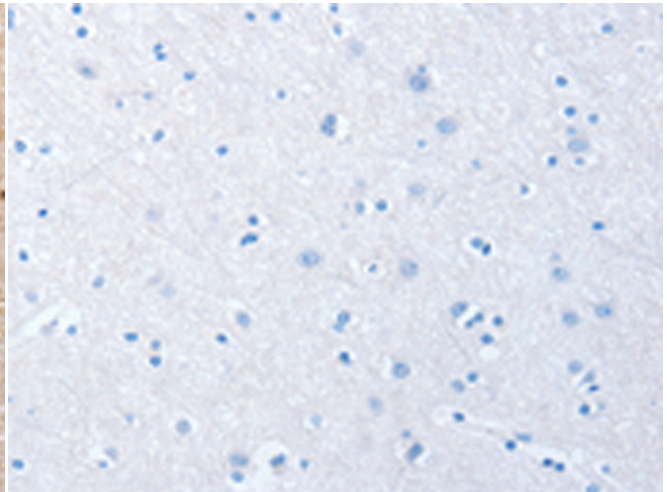
Immunohistochemistry analysis of paraffin embedded Human colon cancer tissue using 217235(CANX Antibody) at a dilution of 1/50(Cytoplasm).



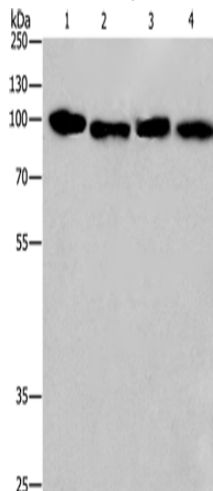
In comparison with the IHC on the left, the same paraffin-embedded Human colon cancer tissue is first treated with the fusion protein and then with 217235(Anti-CANX Antibody) at dilution 1/50.



The image on the left is immunohistochemistry of paraffin-embedded Human brain tissue using 217235(Anti-CANX Antibody) at a dilution of 1/50.



In comparison with the IHC on the left, the same paraffin-embedded Human brain tissue is first treated with fusion protein and then with D222022(Anti-CANX Antibody) at dilution 1/50.



Gel: 8%SDS-PAGE, Lysate: 40 µg;  
Lane 1-4: HeLa cells, 231 cells, human placenta tissue, Human carcinoma of sigmoid tissue;  
Primary antibody: 217235(CANX Antibody) at dilution 1/615;  
Secondary antibody: Goat anti rabbit IgG at 1/8000 dilution;  
Exposure time: 20 seconds



# Product Description

Pioneering GTPase and Oncogene Product Development since 2010

---