

CAMTA1 RABBIT PAB

货号: S214204

产品全名: CAMTA1 兔多抗

基因符号: CECBA; CANPMR

UNIPROT ID: Q9Y6Y1 (Gene Accession - NP_001182492)

背景: The protein encoded by this gene contains a CGI DNA-binding domain, a transcription factor immunoglobulin domain, ankyrin repeats, and calmodulin-binding IQ motifs. The encoded protein is thought to be a transcription factor and may be a tumor suppressor. However, a translocation event is sometimes observed between this gene and the WWTR1 gene, with the resulting WWTR1-CAMTA1 oncoprotein leading to epithelioid hemangioendothelioma, a malignant vascular cancer.

抗原: Synthetic peptide of human CAMTA1

经过测试的应用: ELISA, IHC

推荐稀释比: IHC: 50-200; ELISA: 5000-10000

种属反应性: Rabbit

克隆性: Rabbit Polyclonal

亚型: Immunogen-specific rabbit IgG

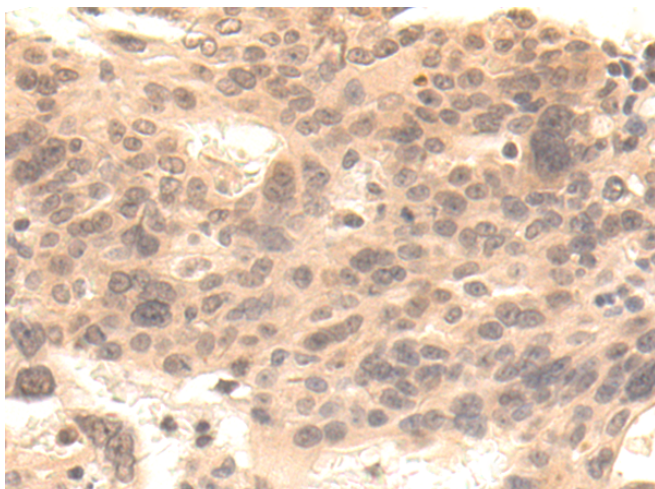
纯化: Antigen affinity purification

种属反应性: Human, Mouse

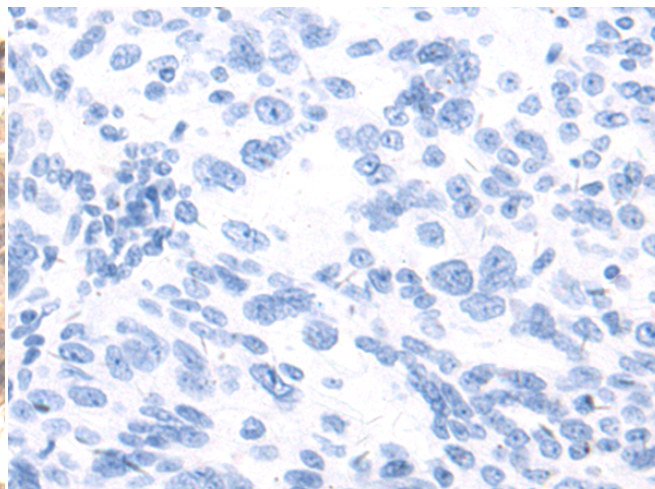
成分: PBS (without Mg²⁺ and Ca²⁺), pH 7.4, 150 mM NaCl, 0.05% Sodium Azide and 40% glycerol

研究领域: Epigenetics and Nuclear Signaling, Cancer

储存和运输: Store at -20°C. Avoid repeated freezing and thawing



Immunohistochemistry analysis of paraffin embedded Human breast cancer tissue using 214204(CAMTA1 Antibody) at a dilution of 1/50(Cytoplasm and Nucleus).



In comparison with the IHC on the left, the same paraffin-embedded Human breast cancer tissue is first treated with the synthetic peptide and then with 214204(Anti-CAMTA1 Antibody) at dilution 1/50.