

CAMSAP1 RABBIT PAB

货号: S215436

产品全名: CAMSAP1 兔多抗

基因符号

UNIPROT ID: Q5T5Y3 (Gene Accession - NP_056262)

背景: Probable microtubule-binding protein that plays a role in the regulation of cell morphology and cytoskeletal organization. Through interaction with spectrin may regulate neurite outgrowth.

抗原: Synthetic peptide of human CAMSAP1

经过测试的应用: ELISA, IHC

推荐稀释比: IHC: 25-100; ELISA: 5000-10000

种属反应性: Rabbit

克隆性: Rabbit Polyclonal

亚型: Immunogen-specific rabbit IgG

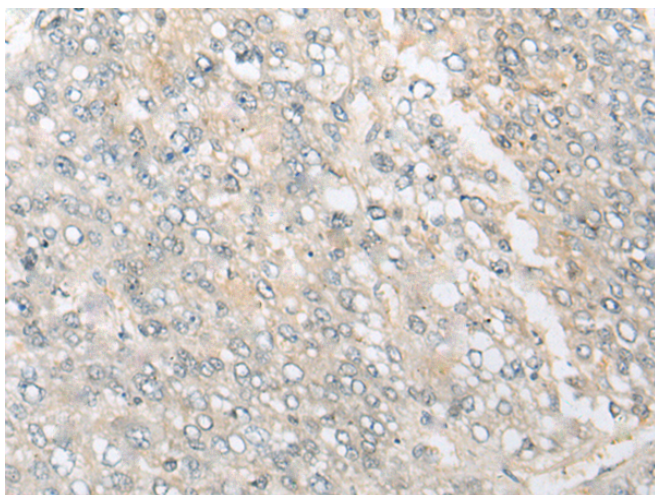
纯化: Antigen affinity purification

种属反应性: Human, Mouse, Rat

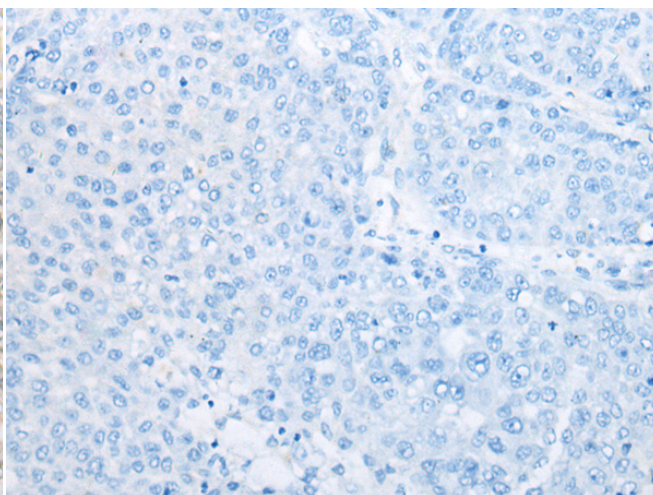
成分: PBS (without Mg²⁺ and Ca²⁺), pH 7.4, 150 mM NaCl, 0.05% Sodium Azide and 40% glycerol

研究领域: Stem Cells

储存和运输: Store at -20°C. Avoid repeated freezing and thawing



Immunohistochemistry analysis of paraffin embedded Human liver cancer tissue using 215436 (CAMSAP1 Antibody) at a dilution of 1/40 (Cytoplasm).



In comparison with the IHC on the left, the same paraffin-embedded Human liver cancer tissue is first treated with the synthetic peptide and then with 215436 (Anti-CAMSAP1 Antibody) at dilution 1/40.