

CAMP PROTEIN KINASE CATALYTIC SUBUNIT RABBIT MAB

货号: N261953

产品全名: cAMP Protein Kinase Catalytic Subunit 兔单克隆抗体

基因符号 PKACA; PPNAD4

UNIPROT ID: P17612

背景: Phosphorylates a large number of substrates in the cytoplasm and the nucleus. Regulates the abundance of compartmentalized pools of its regulatory subunits through phosphorylation of PJA2 which binds and ubiquitinates these subunits, leading to their subsequent proteolysis. Phosphorylates CDC25B, ABL1, NFKB1, CLDN3, PSMC5/RPT6, PJA2, RYR2, RORA and VASP. RORA is activated by phosphorylation. Required for glucose-mediated adipogenic differentiation increase and osteogenic differentiation inhibition from osteoblasts. Involved in the regulation of platelets in response to thrombin and collagen; maintains circulating platelets in a resting state by phosphorylating proteins in numerous platelet inhibitory pathways when in complex with NF-kappa-B (NFKB1 and NFKB2) and I-kappa-B-alpha (NFKBIA), but thrombin and collagen disrupt these complexes and free active PRKACA stimulates platelets and leads to platelet aggregation by phosphorylating VASP. Prevents the antiproliferative and anti-invasive effects of alpha-difluoromethylornithine in breast cancer cells when activated. RYR2 channel activity is potentiated by phosphorylation in presence of luminal Ca²⁺, leading to reduced amplitude and increased frequency of store overload-induced Ca²⁺ release (SOICR) characterized by an increased rate of Ca²⁺ release and propagation velocity of spontaneous Ca²⁺ waves, despite reduced wave amplitude and resting cytosolic Ca²⁺. PSMC5/RPT6 activation by phosphorylation stimulates proteasome. Negatively regulates tight junctions (TJs) in ovarian cancer cells via CLDN3 phosphorylation. NFKB1 phosphorylation promotes NF-kappa-B p50-p50 DNA binding. Involved in embryonic development by down-regulating the Hedgehog (Hh) signaling pathway that determines embryo pattern formation and morphogenesis. Prevents meiosis resumption in prophase-arrested oocytes via CDC25B inactivation by phosphorylation. May also regulate rapid eye movement (REM) sleep in the pedunculopontine tegmental (PPT). Phosphorylates APOBEC3G and AICDA. Isoform 2 phosphorylates and activates ABL1 in sperm flagellum to promote spermatozoa capacitation. Phosphorylates HSF1; this phosphorylation promotes HSF1 nuclear localization and transcriptional activity upon heat shock (PubMed:21085490).

抗原: A synthetic peptide of human cAMP Protein Kinase Catalytic subunit

经过测试的应用: WB,IHC-F,IHC-P,ICC/IF,IP

推荐稀释比: WB: 1/500-1/1000 IHC: 1/50-1/100 IF: 1/50-1/200 IP: 1/20

种属反应性: Rabbit

克隆性: Rabbit Monoclonal

克隆编号: R07-8H3

分子量: Calculated MW: 41 kDa; Observed MW: 41 kDa

亚型: IgG

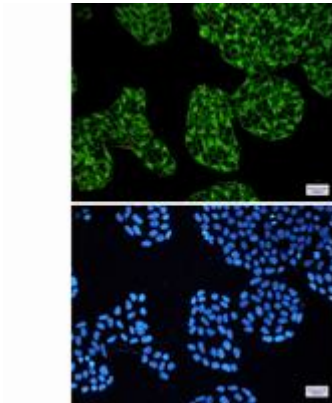
纯化: Affinity Purified

种属反应性: Human, Mouse and Rat

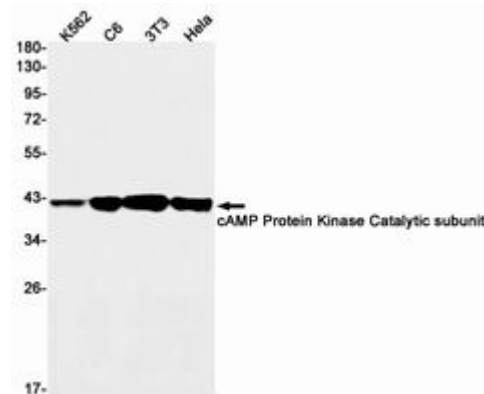
成分: PBS (without Mg²⁺ and Ca²⁺), pH 7.3 containing 50% glycerol, 0.5% BSA and 0.02% sodium azide

研究领域: Signal Transduction

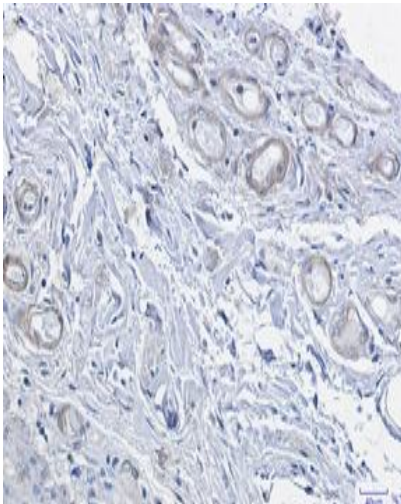
储存和运输: Store at -20°C. Avoid repeated freezing and thawing



Immunocytochemistry analysis of cAMP Protein Kinase Catalytic subunit (green) in HeLa using cAMP Protein Kinase Catalytic subunit antibody, and DAPI (blue)



Western blot analysis of cAMP Protein Kinase Catalytic subunit in K562, C6, 3T3, HeLa lysates using cAMP Protein Kinase Catalytic subunit antibody.



Immunohistochemistry analysis of paraffin-embedded Human colon cancer using cAMP Protein Kinase Catalytic subunit antibody. High-pressure and temperature Sodium Citrate pH 6.0 was used for antigen retrieval.