

CAMKK1 RABBIT PAB

货号: S218427

产品全名: CAMKK1 兔多抗

基因符号: CAMKKA

UNIPROT ID: Q8N5S9 (Gene Accession - BC031647)

背景: The product of this gene belongs to the Serine/Threonine protein kinase family, and to the Ca(2+)/calmodulin-dependent protein kinase subfamily. This protein plays a role in the calcium/calmodulin-dependent (CaM) kinase cascade. Three transcript variants encoding two distinct isoforms have been identified for this gene.

抗原: Fusion protein of human CAMKK1

经过测试的应用: ELISA, WB, IHC

推荐稀释比: IHC: 30-150;WB: 200-1000;ELISA: 500-1000

种属反应性: Rabbit

克隆性: Rabbit Polyclonal

亚型: Immunogen-specific rabbit IgG

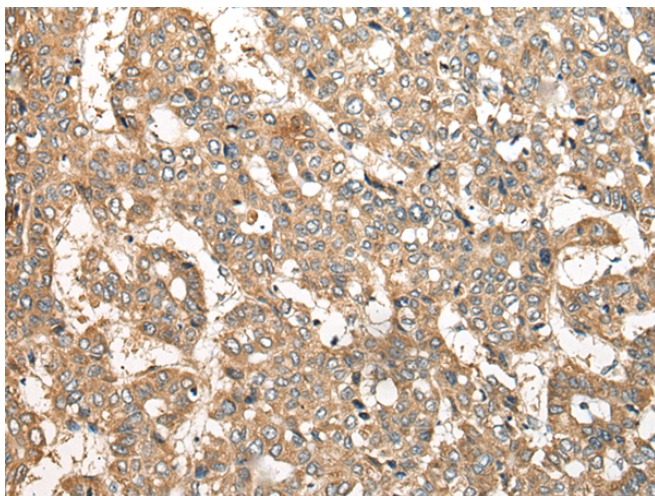
纯化: Antigen affinity purification

种属反应性: Human, Mouse, Rat

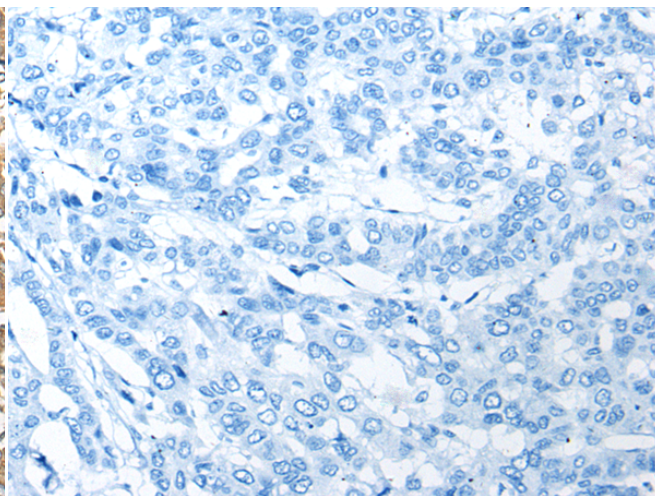
成分: PBS (without Mg²⁺ and Ca²⁺), pH 7.4, 150 mM NaCl, 0.05% Sodium Azide and 40% glycerol

研究领域: Neuroscience

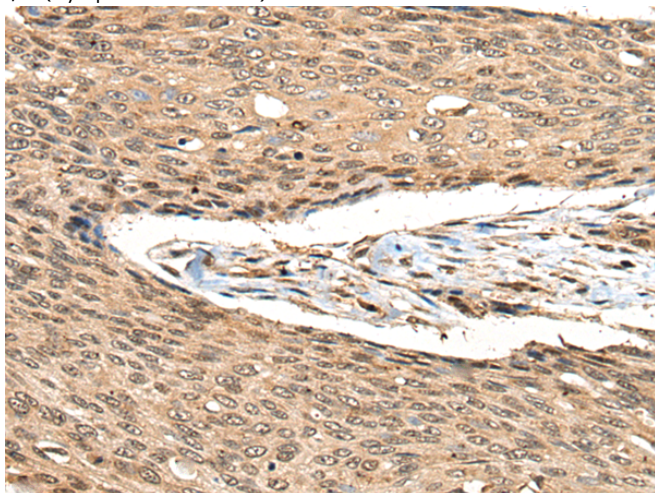
储存和运输: Store at -20°C. Avoid repeated freezing and thawing



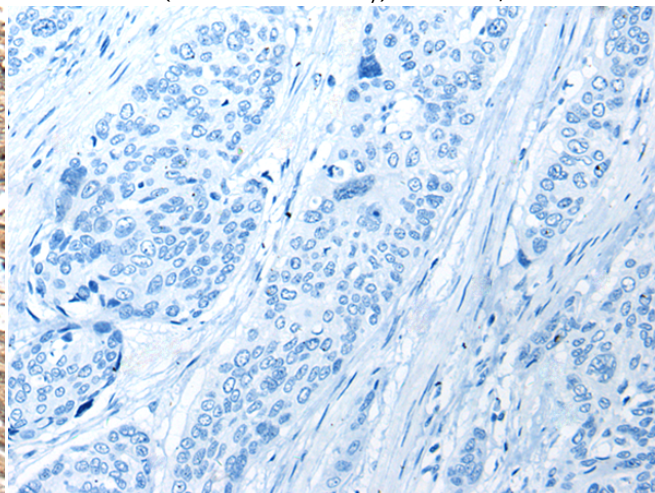
Immunohistochemistry analysis of paraffin embedded Human liver cancer tissue using 218427(CAMKK1 Antibody) at a dilution of 1/35(Cytoplasm or Nucleus).



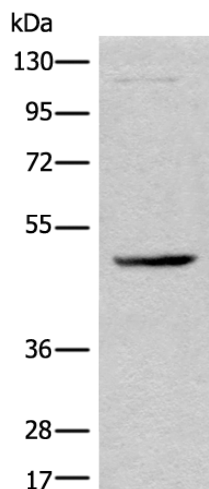
In comparison with the IHC on the left, the same paraffin-embedded Human liver cancer tissue is first treated with the fusion protein and then with 218427(Anti-CAMKK1 Antibody) at dilution 1/35.



The image on the left is immunohistochemistry of paraffin-embedded Human esophagus cancer tissue using 218427(Anti-CAMKK1 Antibody) at a dilution of 1/35.



In comparison with the IHC on the left, the same paraffin-embedded Human esophagus cancer tissue is first treated with fusion protein and then with D224398(Anti-CAMKK1 Antibody) at dilution 1/35.



Gel: 8%SDS-PAGE, Lysate: 40 µg;
Lane: 293T cell lysate;
Primary antibody: 218427(CAMKK1 Antibody) at dilution 1/350;
Secondary antibody: Goat anti rabbit IgG at 1/8000 dilution;
Exposure time: 5 seconds



Product Description

Pioneering GTPase and Oncogene Product Development since 2010
