

CAMKII DELTA RABBIT PAB

货号: N225816

产品全名: CaMKII delta 兔多抗

基因符号 CAM kinase 2 delta; CAM kinase II delta; CaM kinase II delta subunit; CaM kinase II subunit delta; CAMK 2d; CaMK-II delta subunit; CAMK2D; CAMKI

UNIPROT ID: Q13557

背景: CaM-kinase II (CAMK2) is a prominent kinase in the central nervous system that may function in long-term potentiation and neurotransmitter release.

抗原: A synthesized peptide derived from human CaMKII delta

经过测试的应用: WB,IHC-P

推荐稀释比: WB: 1/500-1/1000 IHC: 1/50-1/100

种属反应性: Rabbit

克隆性: Rabbit Polyclonal

分子量: Calculated MW: 56 kDa; Observed MW: 50 kDa

亚型: IgG

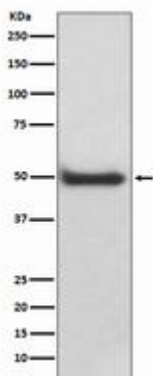
纯化: Affinity Chromatography

种属反应性: Human, Mouse and Rat

成分: PBS (without Mg²⁺ and Ca²⁺), pH 7.3 containing 50% glycerol, 0.5% BSA and 0.02% sodium azide

研究领域: Neuroscience

储存和运输: Store at -20°C. Avoid repeated freezing and thawing



Western blot analysis of CaMKII delta in A431 lysates using CaMKII delta antibody.



Product Description

Pioneering GTPase and Oncogene Product Development since 2010
