

CAMKII ALPHA/DELTA RABBIT PAB

货号: N225433

产品全名: CaMKII alpha/delta 兔多抗

基因符号 CAMK2A; CAMKA; KIAA0968; Calcium/calmodulin-dependent protein kinase type II subunit alpha; CaM kinase II subunit alpha; CaMK-II subunit alpha; CAMK2D; CAMKD; Calcium/calmodulin-dependent protein kinase type II subunit delta; CaM kinase II

UNIPROT ID: Q9UQM7/Q13557

背景: The product of CAMK2A (calcium/calmodulin dependent protein kinase II alpha) belongs to the serine/threonine protein kinases family, and to the Ca(2+)/calmodulin-dependent protein kinases subfamily. Calcium signaling is crucial for several aspects of plasticity at glutamatergic synapses. This calcium calmodulin-dependent protein kinase is composed of four different chains: alpha, beta, gamma, and delta. The alpha chain encoded by this gene is required for hippocampal long-term potentiation (LTP) and spatial learning. In addition to its calcium-calmodulin (CaM)-dependent activity, this protein can undergo autophosphorylation, resulting in CaM-independent activity. Two transcript variants encoding distinct isoforms have been identified for CAMK2A.

抗原: The antiserum was produced against synthesized peptide derived from human CaMK2 alpha/delta. AA range:256-305

经过测试的应用: WB,IHC-F,IHC-P,ICC/IF,ELISA

推荐稀释比: WB: 1/500-1/1000 IHC: 1/50-1/100 IF: 1/50-1/200 ELISA: 1/10000

种属反应性: Rabbit

克隆性: Rabbit Polyclonal

分子量: Calculated MW: 54 kDa; Observed MW: 54 kDa

亚型: IgG

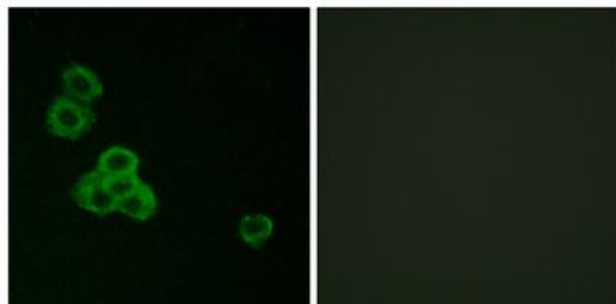
纯化: Affinity Chromatography

种属反应性: Human, Mouse and Rat

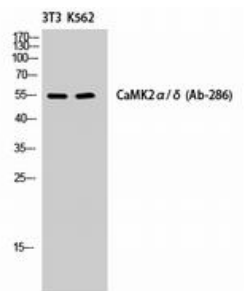
成分: PBS (without Mg²⁺ and Ca²⁺), pH 7.3 containing 50% glycerol, 0.5% BSA and 0.02% sodium azide

研究领域: Neuroscience

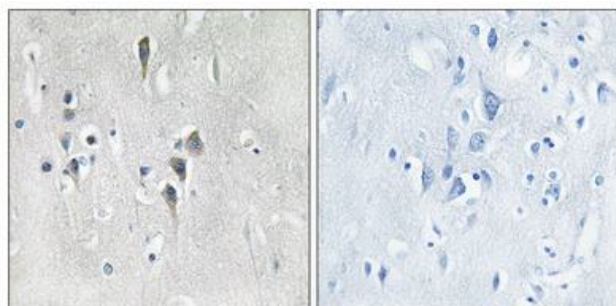
储存和运输: Store at -20°C. Avoid repeated freezing and thawing



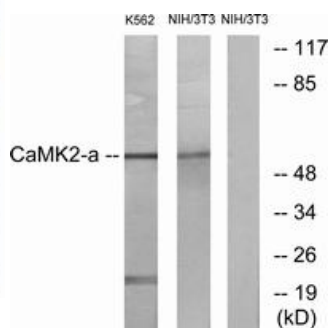
Immunofluorescence analysis of CaMKII alpha/delta in MCF-7 using CaMKII alpha/delta antibody. The picture on the right is blocked using the synthesized peptide.



Western blot analysis of CaMKII alpha/delta in NIH3T3/K562 lysates using CaMKII alpha/delta antibody.



Immunohistochemistry analysis of paraffin-embedded Human brain tissue using CaMKII alpha/delta antibody. High-pressure and temperature Sodium Citrate pH 6.0 was used for antigen retrieval. Sample with blocking peptide on the right.



Western blot analysis of CaMKII alpha/delta in NIH/3T3 and K562 lysates using CaMKII alpha/delta antibody. The lane on the right is blocked with the synthesized peptide.