

CALUMENIN RABBIT MAB

货号: N263248

产品全名: Calumenin 兔单克隆抗体

基因符号 CALU; CALU_HUMAN; Calumenin 1; Calumenin 2; Calumenin; Crocalbin; crocalbin-like protein; FLJ90608; IEF SSP 9302; multiple EF-hand protein; OTTHUMP00000212712; OTTHUMP00000212713; OTTHUMP00000212714; OTTHUMP00000212715.

UNIPROT ID: O43852

背景: The product of this gene is a calcium-binding protein localized in the endoplasmic reticulum (ER) and it is involved in such ER functions as protein folding and sorting. This protein belongs to a family of multiple EF-hand proteins (CERC) that include reticulocalbin, ERC-55, and Cab45 and the product of this gene. Alternatively spliced transcript variants encoding different isoforms have been identified. [provided by RefSeq, Oct 2008]

抗原: A synthetic peptide of human Calumenin

经过测试的应用: WB,IHC-P

推荐稀释比: WB: 1/500-1/1000 IHC: 1/50-1/100

种属反应性: Rabbit

克隆性: Rabbit Monoclonal

克隆编号: R05-1E7

分子量: Calculated MW: 37 kDa; Observed MW: 47 kDa

亚型: IgG

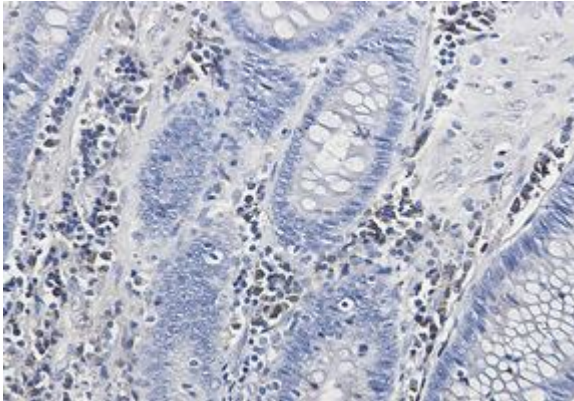
纯化: Affinity Purified

种属反应性: Human,Rat

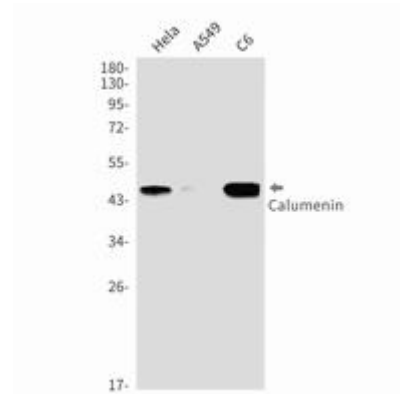
成分: PBS (without Mg²⁺ and Ca²⁺), pH 7.3 containing 50% glycerol, 0.5% BSA and 0.02% sodium azide

研究领域: Tags & Cell Markers

储存和运输: Store at -20°C. Avoid repeated freezing and thawing



Immunohistochemistry analysis of paraffin-embedded Human colon cancer using Calumenin antibody. High-pressure and temperature Sodium Citrate pH 6.0 was used for antigen retrieval.



Western blot analysis of Calumenin in Hela, A549, C6 lysates using Calumenin antibody.