

CALU RABBIT PAB

货号: S217232

产品全名: CALU 兔多抗

基因符号

UNIPROT ID: O43852 (Gene Accession - BC013383)

背景: The product of this gene is a calcium-binding protein localized in the endoplasmic reticulum (ER) and it is involved in such ER functions as protein folding and sorting. This protein belongs to a family of multiple EF-hand proteins (CERC) that include reticulocalbin, ERC-55, and Cab45 and the product of this gene. Alternatively spliced transcript variants encoding different isoforms have been identified

抗原: Fusion protein of human CALU

经过测试的应用: ELISA, WB, IHC

推荐稀释比: IHC: 100-300;WB: 500-2000;ELISA: 2000-5000

种属反应性: Rabbit

克隆性: Rabbit Polyclonal

亚型: Immunogen-specific rabbit IgG

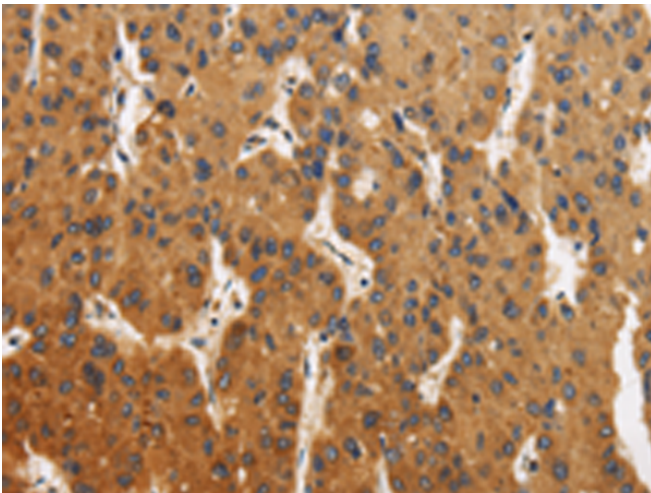
纯化: Antigen affinity purification

种属反应性: Human, Mouse, Rat

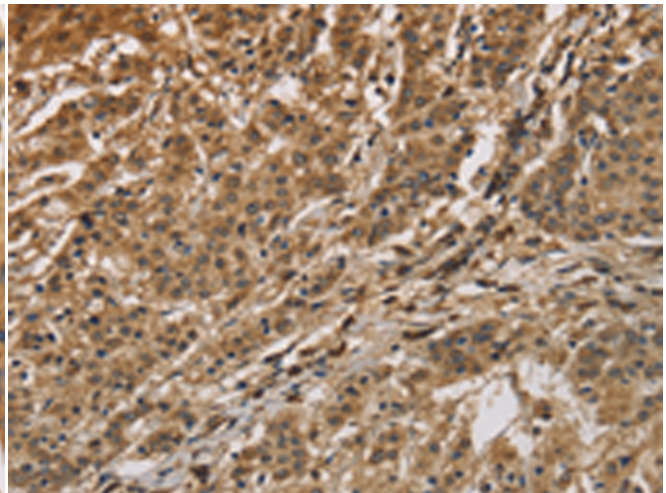
成分: PBS (without Mg²⁺ and Ca²⁺), pH 7.4, 150 mM NaCl, 0.05% Sodium Azide and 40% glycerol

研究领域: Signal Transduction

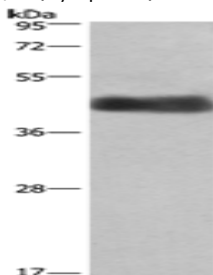
储存和运输: Store at -20°C. Avoid repeated freezing and thawing



Immunohistochemistry analysis of paraffin-embedded Human liver cancer tissue using 217232(CALU Antibody) at a dilution of 1/40(Cytoplasm).



Immunohistochemistry analysis of paraffin-embedded Human gastric cancer tissue using 217232(Anti-CALU Antibody) at a dilution of 1/40.



Gel: 8%SDS-PAGE, Lysate: 40 µg;
Lane: Human placenta tissue;
Primary antibody: 217232(CALU Antibody) at dilution 1/400;
Secondary antibody: Goat anti rabbit IgG at 1/8000 dilution;
Exposure time: 1 minute