

## CALCINEURIN A RABBIT MAB

货号: N263246

产品全名: Calcineurin A 兔单克隆抗体

基因符号 PPP3CA; CALNA; CNA; Serine/threonine-protein phosphatase 2B catalytic subunit alpha isoform; CAM-PRP catalytic subunit; Calmodulin-dependent calcineurin A subunit alpha isoform

**UNIPROT ID:** Q08209

背景: Calcineurin, also known as protein phosphatase 2B (PP2B), is a calmodulin-dependent, calcium-activated, serine/threonine protein phosphatase composed of a catalytic subunit (calcineurin A) and a tightly bound regulatory subunit (calcineurin B). Calcium-dependent, calmodulin-stimulated protein phosphatase. This subunit may have a role in the calmodulin activation of calcineurin. Dephosphorylates DNMI1, HSPB1 and SSH1.

抗原: A synthetic peptide of human Calcineurin A

经过测试的应用: WB,IP

推荐稀释比: WB: 1/500-1/1000 IP: 1/20

种属反应性: Rabbit

克隆性: Rabbit Monoclonal

克隆编号: R01-6F5

分子量: Calculated MW: 59 kDa; Observed MW: 59 kDa

亚型: IgG

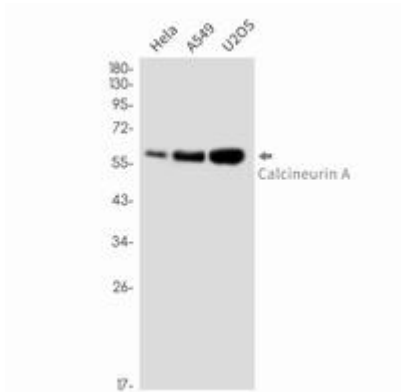
纯化: Affinity Purified

种属反应性: Human, Mouse and Rat

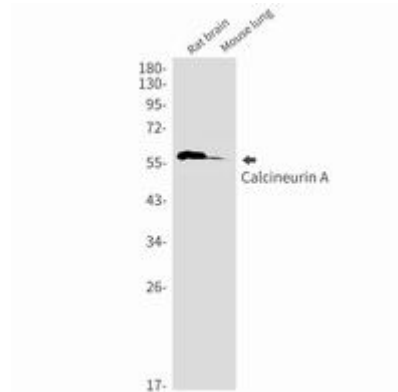
成分: PBS (without Mg<sup>2+</sup> and Ca<sup>2+</sup>), pH 7.3 containing 50% glycerol, 0.5% BSA and 0.02% sodium azide

研究领域: Immunology

储存和运输: Store at -20°C. Avoid repeated freezing and thawing



Western blot analysis of Calcineurin A in HeLa, A549, U2OS lysates using Calcineurin A antibody.



Western blot analysis of Calcineurin A in rat brain, mouse lung lysates using Calcineurin A antibody.