

CALCA/CALCB RABBIT PAB

货号: S219721

产品全名: CALCA/CALCB 兔多抗

基因符号 CT; KC; PCT; CGRP; CALCI; CGRP1; CGRP-I; CALC2; CGRP2; CGRP-II

UNIPROT ID: P01258/PI0092

背景: This gene encodes the peptide hormones calcitonin, calcitonin gene-related peptide and katecalcain by tissue-specific alternative RNA splicing of the gene transcripts and cleavage of inactive precursor proteins. Calcitonin is involved in calcium regulation and acts to regulate phosphorus metabolism. Calcitonin gene-related peptide functions as a vasodilator and as an antimicrobial peptide while katecalcain is a calcium-lowering peptide. Multiple transcript variants encoding different isoforms have been found for this gene.

抗原: Synthetic peptide of human CALCA/CALCB

经过测试的应用: ELISA, IHC

推荐稀释比: IHC: 25-100; ELISA: 1000-2000

种属反应性: Rabbit

克隆性: Rabbit Polyclonal

亚型: Immunogen-specific rabbit IgG

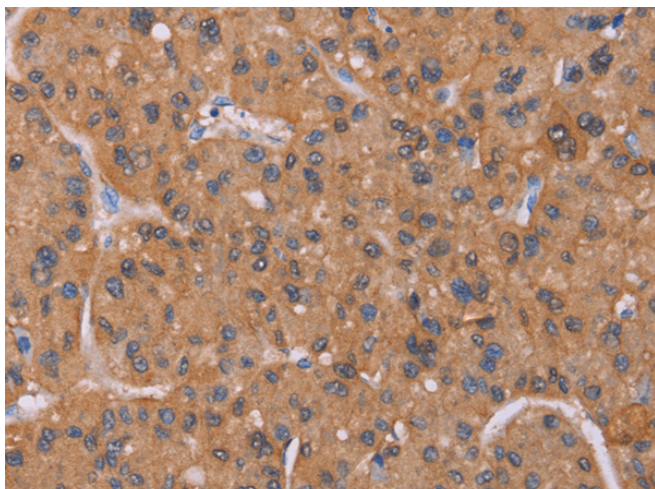
纯化: Antigen affinity purification

种属反应性: Human

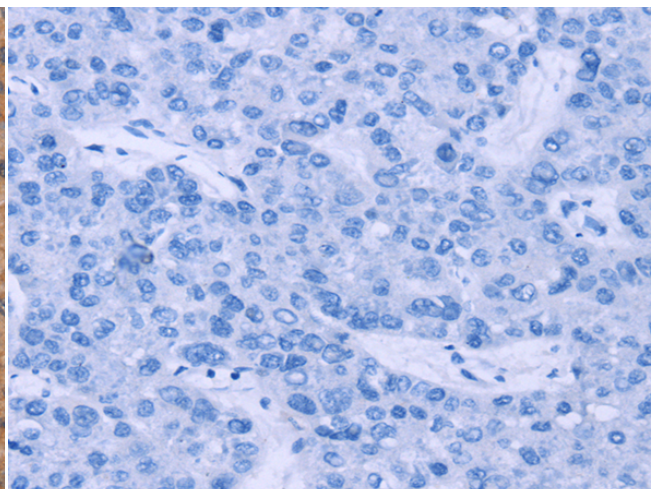
成分: PBS (without Mg²⁺ and Ca²⁺), pH 7.4, 150 mM NaCl, 0.05% Sodium Azide and 40% glycerol

研究领域: Cardiovascular

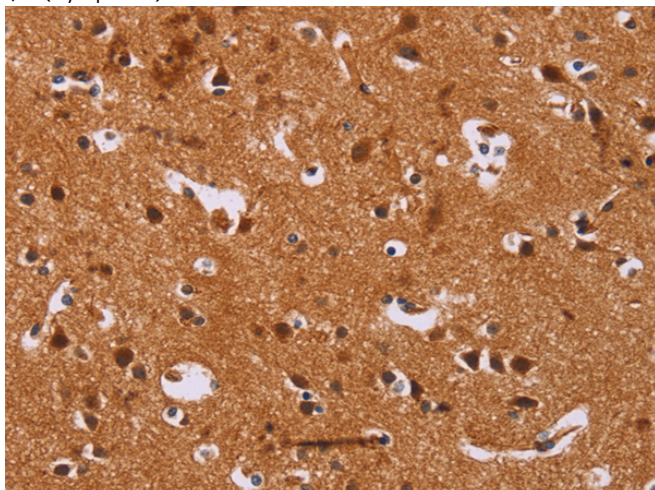
储存和运输: Store at -20°C. Avoid repeated freezing and thawing



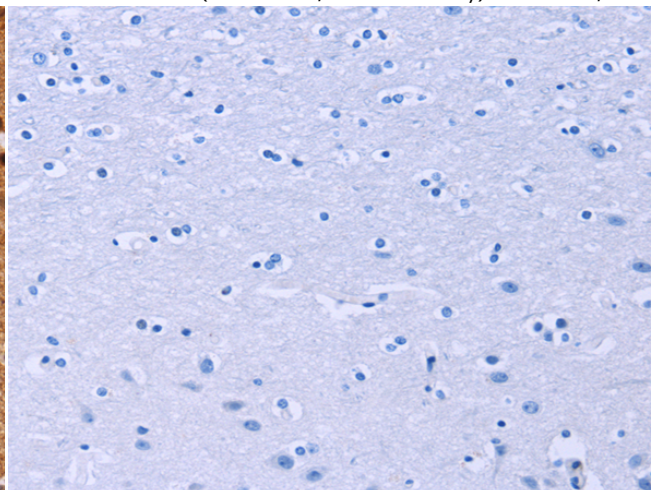
Immunohistochemistry analysis of paraffin embedded Human liver cancer tissue using 219721(CALCA/CALCB Antibody) at a dilution of 1/25(Cytoplasm).



In comparison with the IHC on the left, the same paraffin-embedded Human liver cancer tissue is first treated with the synthetic peptide and then with 219721(Anti-CALCA/CALCB Antibody) at dilution 1/25.



The image on the left is immunohistochemistry of paraffin-embedded Human brain tissue using 219721(Anti-CALCA/CALCB Antibody) at a dilution of 1/25.



In comparison with the IHC on the left, the same paraffin-embedded Human brain tissue is first treated with synthetic peptide and then with D26021(Anti-CALCA/CALCB Antibody) at dilution 1/25.



Product Description

Pioneering GTPase and Oncogene Product Development since 2010
